

**Synonym**

CD244,2B4,SLAMF4,NKR2B4,NAIL,h2B4

**Source**

Human 2B4, His Tag(2B4-H5224) is expressed from human 293 cells (HEK293). It contains AA Cys 22 - Arg 221 (Accession # [Q9BZW8-2](#)).

Predicted N-terminus: Cys 22

**Molecular Characterization**

2B4(Cys 22 - Arg 221)  
Q9BZW8-2 Poly-his

This protein carries a polyhistidine tag at the C-terminus.

The protein has a calculated MW of 23.1 kDa. The protein migrates as 35-55 kDa under reducing (R) condition (SDS-PAGE) due to glycosylation.

**Endotoxin**

Less than 1.0 EU per µg by the LAL method.

**Purity**

>95% as determined by SDS-PAGE.

**Formulation**

Lyophilized from 0.22 µm filtered solution in PBS, pH7.4 with trehalose as protectant.

Contact us for customized product form or formulation.

**Reconstitution**

Please see Certificate of Analysis for specific instructions.

*For best performance, we strongly recommend you to follow the reconstitution protocol provided in the CoA.*

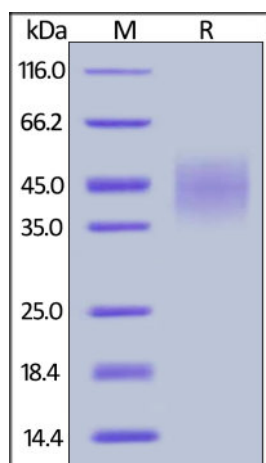
**Storage**

For long term storage, the product should be stored at lyophilized state at -20°C or lower.

*Please avoid repeated freeze-thaw cycles.*

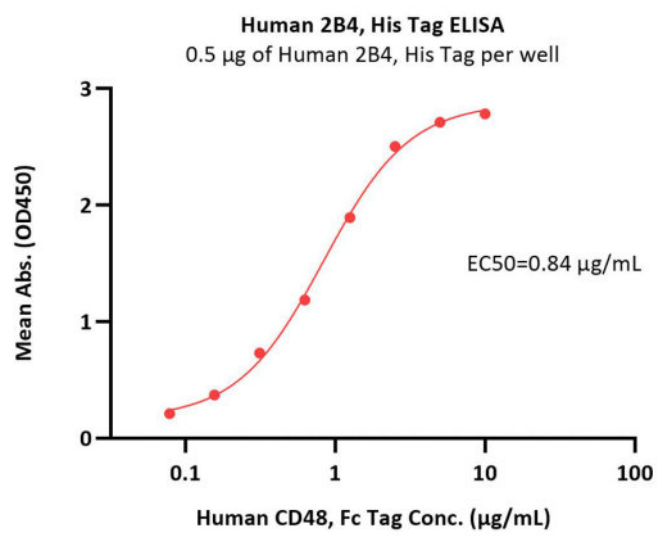
This product is stable after storage at:

- -20°C to -70°C for 12 months in lyophilized state;
- -70°C for 3 months under sterile conditions after reconstitution.

**SDS-PAGE**

Human 2B4, His Tag on SDS-PAGE under reducing (R) condition. The gel was stained with Coomassie Blue. The purity of the protein is greater than 95%.

**Bioactivity-ELISA**



Immobilized Human 2B4, His Tag (Cat. No. 2B4-H5224) at 5 µg/mL (100 µL/well) can bind Human CD48, Fc Tag (Cat. No. BC1-H5255) with a linear range of 0.078-1.25 µg/mL (QC tested).

### Background

Natural killer cell receptor 2B4 is also known as NK cell type I receptor protein 2B4 (NKR2B4 or h2B4), SLAM family member 4 (SLAMF4), Signaling lymphocytic activation molecule 4, CD antigen CD244. NKR2B4 / CD244 contains two Ig-like (immunoglobulin-like) domains. CD244 is expressed in spleen, PBL, followed by lung, liver, testis and small intestine. CD244 interacts with CD48. Following phosphorylation, CD244 is able to recruit PTPN11/SHP-2 and SH2D1A/SAP. SLAMF4 modulate other receptor-ligand interactions to enhance leukocyte activation. CD244/2B4 is the only heterophilic receptor of SLAM family.

### Clinical and Translational Updates

Please contact us via [TechSupport@acrobiosystems.com](mailto:TechSupport@acrobiosystems.com) if you have any question on this product.