



## Synonym

SNCA,NACP,PARK1,alpha-Synuclein

## Source

Human Alpha-Synuclein, Tag Free(ALN-H5214) is expressed from E. coli cells.

It contains AA Met 1 - Ala 140 (Accession # [P37840-1](#)).

Predicted N-terminus: Met 1

## Molecular Characterization

**SNCA(Met 1 - Ala 140)**  
**P37840-1**

This protein carries no "tag".

The protein has a calculated MW of 14.5 kDa. The protein migrates as 15-16 kDa under reducing (R) condition (SDS-PAGE).

## Endotoxin

Less than 1.0 EU per µg by the LAL method.

## Purity

>90% as determined by SDS-PAGE.

>90% as determined by SEC-MALS.

## Formulation

Supplied as 0.2 µm filtered solution in 50 mM HEPES, 100 mM NaCl, pH7.5 with trehalose as protectant.

Contact us for customized product form or formulation.

## Shipping

*This product is supplied and shipped with dry ice, please inquire the shipping cost.*

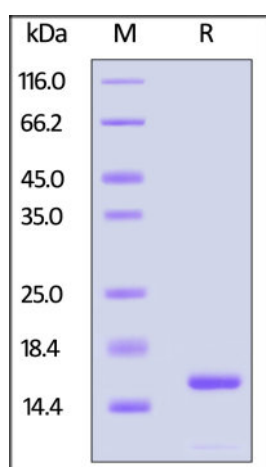
## Storage

*Please avoid repeated freeze-thaw cycles.*

This product is stable after storage at:

- The product **MUST** be stored at -70°C or lower upon receipt;
- -70°C for 3 months under sterile conditions.

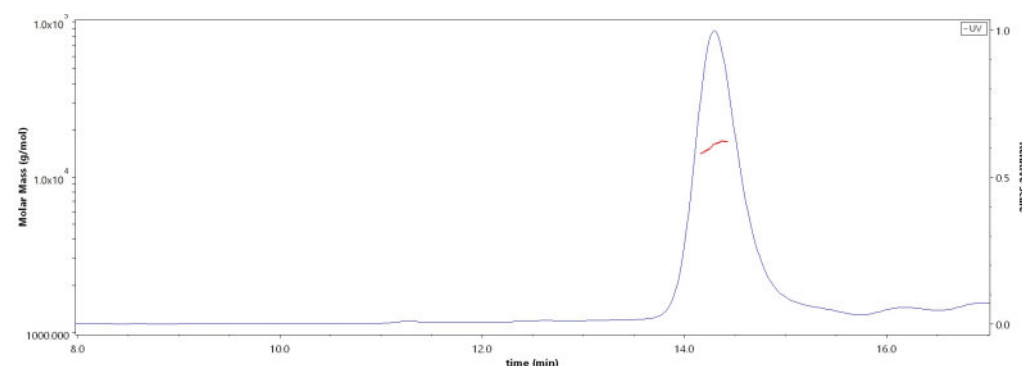
## SDS-PAGE



Human Alpha-Synuclein, Tag Free on SDS-PAGE under reducing (R) condition. The gel was stained with Coomassie Blue. The purity of the protein is greater than 90%.

## Bioactivity-ELISA

## SEC-MALS

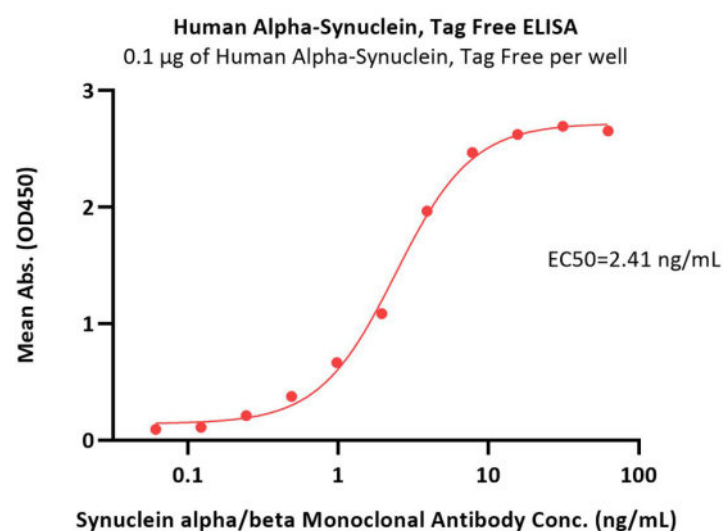


The purity of Human Alpha-Synuclein, Tag Free (Cat. No. ALN-H5214) is more than 90% and the molecular weight of this protein is around 13-19 kDa verified by SEC-MALS.

[Report](#)

Discounts, Gifts,  
and more!





Immobilized Human Alpha-Synuclein, Tag Free (Cat. No. ALN-H5214) at 1 µg/mL (100 µL/well) can bind Synuclein alpha/beta Monoclonal Antibody with a linear range of 0.1-8 ng/mL (QC tested).

## Background

Alpha-synuclein is a neuronal protein that plays several roles in synaptic activity such as regulation of synaptic vesicle trafficking and subsequent neurotransmitter release. It acts also as a molecular chaperone in its multimeric membrane-bound state, assisting in the folding of synaptic fusion components called SREs (Soluble NSF Attachment Protein REceptors) at presynaptic plasma membrane in conjunction with cysteine string protein-alpha/DJC5. Abnormalities in alpha-synuclein are implicated in the pathogenesis of Parkinson's disease (PD). Alpha-synuclein is present in Lewy-bodies, the neuropathological hallmark of PD, and the protein and its aggregation have been widely linked to neurotoxic pathways that ultimately lead to neurodegeneration.

## Clinical and Translational Updates

Discounts, Gifts,  
and more!

