

**Synonym**

PLAP

**Source**

Human ALPP Protein, His Tag(ALP-H52H3) is expressed from human 293 cells (HEK293). It contains AA Ile 23 - Asp 506 (Accession # [P05187-1](#)).

Predicted N-terminus: Ile 23

**Molecular Characterization**

ALPP(Ile 23 - Asp 506)  
P05187-1 Poly-his

This protein carries a polyhistidine tag at the C-terminus.

The protein has a calculated MW of 54.7 kDa. The protein migrates as 64-66 kDa when calibrated against [Star Ribbon Pre-stained Protein Marker](#) under reducing (R) condition (SDS-PAGE) due to glycosylation.

**Endotoxin**

Less than 1.0 EU per µg by the LAL method.

**Purity**

>90% as determined by SDS-PAGE.

**Formulation**

Lyophilized from 0.22 µm filtered solution in 20 mM Tris, 150 mM NaCl, pH7.5 with trehalose as protectant.

Contact us for customized product form or formulation.

**Reconstitution**

Please see Certificate of Analysis for specific instructions.

*For best performance, we strongly recommend you to follow the reconstitution protocol provided in the CoA.*

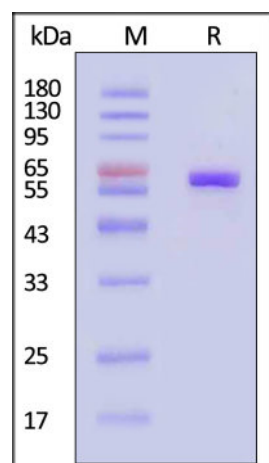
**Storage**

For long term storage, the product should be stored at lyophilized state at -20°C or lower.

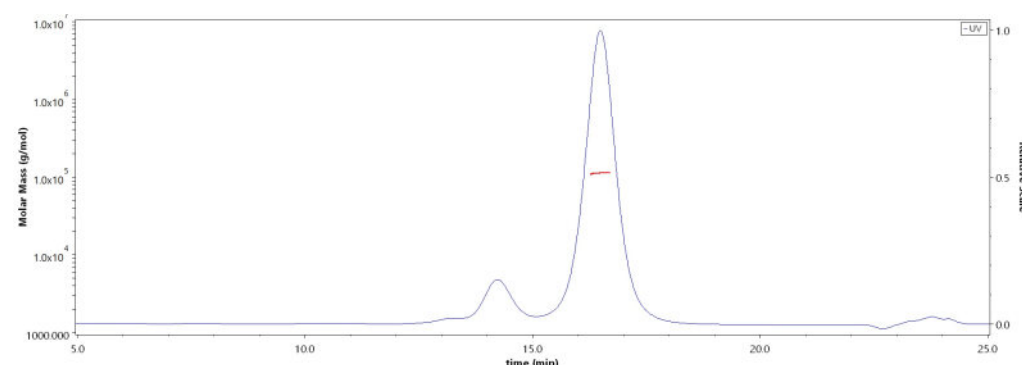
*Please avoid repeated freeze-thaw cycles.*

This product is stable after storage at:

- -20°C to -70°C for 12 months in lyophilized state;
- -70°C for 3 months under sterile conditions after reconstitution.

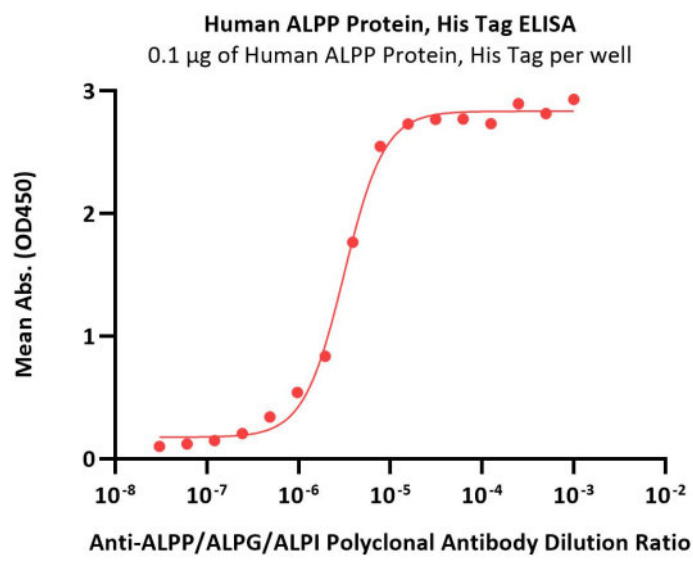
**SDS-PAGE**

Human ALPP Protein, His Tag on SDS-PAGE under reducing (R) condition. The gel was stained with Coomassie Blue. The purity of the protein is greater than 90% (With [Star Ribbon Pre-stained Protein Marker](#)).

**Bioactivity-ELISA****SEC-MALS**

The purity of Human ALPP Protein, His Tag (Cat. No. ALP-H52H3) is more than 85% and the molecular weight of this protein is around 105-135 kDa verified by SEC-MALS.

[Report](#)



Immobilized Human ALPP Protein, His Tag (Cat. No. ALP-H52H3) at 1 µg/mL (100 µL/well) can bind various dilution ratio of Anti-ALPP/ALPG/ALPI Polyclonal Antibody (QC tested).

### Background

ALPP is highly expressed in a variety of solid tumors, including ovarian, endometrial, germ cell, non-small cell lung, bladder and gastric cancers. In normal tissues, it is expressed in the placenta and low in lung and reproductive tissues. ALPP is a membrane protein and exists as a homodimer.

### Clinical and Translational Updates

Please contact us via [TechSupport@acrobiosystems.com](mailto:TechSupport@acrobiosystems.com) if you have any question on this product.