



Synonym

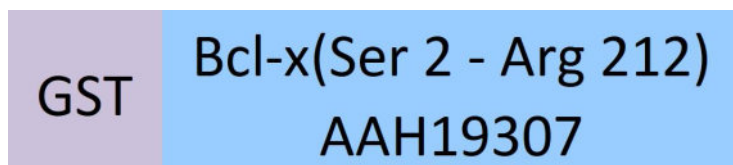
BCL2L1, Bcl-XL, Bcl2-L-1, BCL-XL,S, BCL2L, BCLX, BCLXL, BCLXS, Bcl-X, bcl-xS

Source

Human Bcl-x, GST Tag(BC1-H513a) is expressed from E. coli cells. It contains AA Ser 2 - Arg 212 (Accession # [AAH19307](#)).

Predicted N-terminus: Met

Molecular Characterization



This protein carries a GST tag at the N-terminus.

The protein has a calculated MW of 50.6 kDa. The protein migrates as 45-50 kDa when calibrated against [Star Ribbon Pre-stained Protein Marker](#) under reducing (R) condition (SDS-PAGE).

Endotoxin

Less than 1.0 EU per µg by the LAL method.

Purity

>92% as determined by SDS-PAGE.

Formulation

Lyophilized from 0.22 µm filtered solution in 20 mM Tris, 100 mM NaCl, pH7.5 with 10 mM GSH with trehalose as protectant.

Contact us for customized product form or formulation.

Reconstitution

Please see Certificate of Analysis for specific instructions.

For best performance, we strongly recommend you to follow the reconstitution protocol provided in the CoA.

Storage

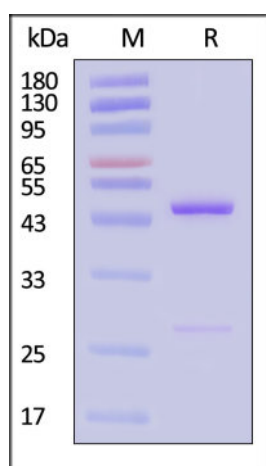
For long term storage, the product should be stored at lyophilized state at -20°C or lower.

Please avoid repeated freeze-thaw cycles.

This product is stable after storage at:

- -20°C to -70°C for 12 months in lyophilized state;
- -70°C for 3 months under sterile conditions after reconstitution.

SDS-PAGE



Human Bcl-x, GST Tag on SDS-PAGE under reducing (R) condition. The gel was stained with Coomassie Blue. The purity of the protein is greater than 92% (With [Star Ribbon Pre-stained Protein Marker](#)).

Background

Bcl-2-like protein 1 (BCL2L1), is also known as Apoptosis regulator Bcl-X (Bcl-XL). BCL2L1 / Bcl-XL is a homodimer protein and belongs to the Bcl-2 family. BCL2L1 is expressed at high levels in cells that undergo a high rate of turnover, such as developing lymphocytes. BCL2L1 is a potent inhibitor of cell death. BCL2L1 Inhibits activation of caspases. BCL2L1 appears to regulate cell death by blocking the voltage-dependent anion channel (VDAC) by binding to it and

Discounts, Gifts,
and more!



Human Bcl-x / BCL2L1 Protein, GST Tag

Catalog # BC1-H513a



BIOSYSTEMS
Acro

preventing the release of the caspase activator, CYC1, from the mitochondrial membrane. BCL2L1 / Bcl-XL also acts as a regulator of G2 checkpoint and progression to cytokinesis during mitosis.

Clinical and Translational Updates

Discounts, Gifts,
and more!



➤ www.acrobiosystems.com

7/31/2024