



Synonym

TNFRSF17,CD269,BCM,BCMA

Source

FITC-Labeled Human BCMA, Fc Tag (Cat. No. BCA-HF254) is expressed from human HEK293 cells. It contains AA Met 1 - Ala 54 (Accession # [Q02223-1](#)). It is the FITC labeled form of Human BCMA, Fc Tag (Cat. No. BC7-H5254).

Predicted N-terminus: Met 1

Molecular Characterization

BCMA(Met 1 - Ala 54) Q02223-1	Fc(Glu 99 - Lys 330) P01857
----------------------------------	--------------------------------

This protein carries a human IgG1 Fc tag at the C-terminus.

The protein has a calculated MW of 32.0 kDa. The protein migrates as 35-44 kDa under reducing (R) condition, and 60-75 kDa when calibrated against [Star Ribbon Pre-stained Protein Marker](#) under non-reducing (NR) condition (SDS-PAGE) due to glycosylation.

Conjugate

FITC

Excitation source: 488 nm spectral line, argon-ion laser

Excitation Wavelength: 488 nm

Emission Wavelength: 535 nm

Labeling

The primary amines in the side chains of lysine residues and the N-terminus of the protein are conjugated with FITC using standard chemical labeling method. The residual FITC is removed by molecular sieve treatment during purification process.

Protein Ratio

The FITC to protein molar ratio is 1.5-3.

Endotoxin

Less than 1.0 EU per µg by the LAL method.

Purity

>92% as determined by SDS-PAGE.

Formulation

Lyophilized from 0.22 µm filtered solution in PBS, pH7.4 with trehalose as protectant.

Contact us for customized product form or formulation.

Reconstitution

Please see Certificate of Analysis for specific instructions.

For best performance, we strongly recommend you to follow the reconstitution protocol provided in the CoA.

Storage

For long term storage, the product should be stored at lyophilized state at -20°C or lower.

Please protect from light and avoid repeated freeze-thaw cycles.

This product is stable after storage at:

- -20°C to -70°C for 12 months in lyophilized state;
- -70°C for 3 months under sterile conditions after reconstitution.

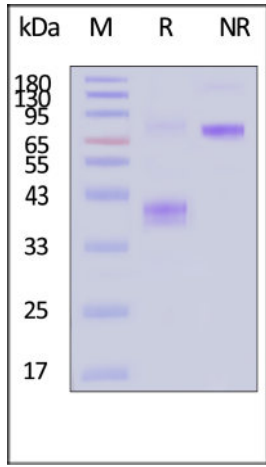
SDS-PAGE

Discounts, Gifts,
and more!



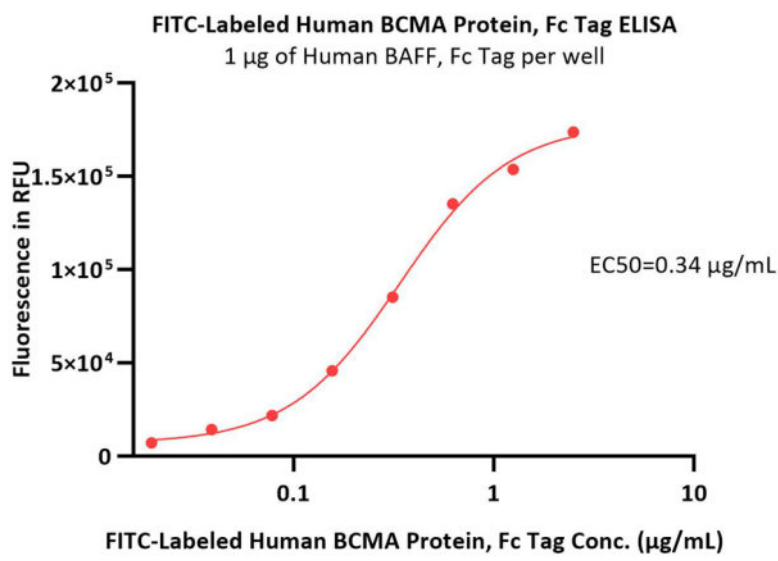
FITC-Labeled Human BCMA / TNFRSF17 Protein, Fc Tag

Catalog # BCA-HF254

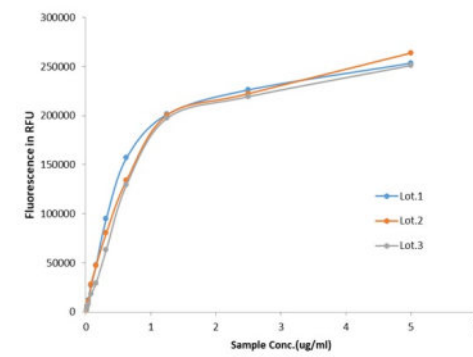


FITC-Labeled Human BCMA Protein, Fc Tag on SDS-PAGE under reducing (R) and non-reducing (NR) conditions. The gel was stained with Coomassie Blue. The purity of the protein is greater than 92% (With [Star Ribbon Pre-stained Protein Marker](#)).

Bioactivity-ELISA



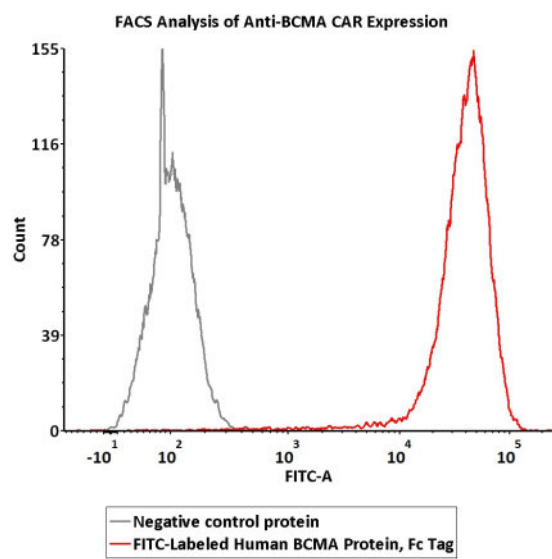
Batch consistency



Lot. No.	EC50(µg/mL)
Lot. No. 1	0.4822
Lot. No. 2	0.6913
Lot. No. 3	0.6279

Immobilized Human BAFF, Fc Tag at 10 µg/mL (100 µL/well) can bind FITC-Labeled Human BCMA Protein, Fc Tag (Cat. No. BCA-HF254) with a linear range of 0.02-1.25 µg/mL (QC tested).

Bioactivity-FACS



2e5 of anti-BCMA CAR-293 cells were stained with 100 µL of 3 µg/mL of FITC-Labeled Human BCMA Protein, Fc Tag (Cat. No. BCA-HF254) and

Discounts, Gifts,
and more!



FITC-Labeled Human BCMA / TNFRSF17 Protein, Fc Tag

Catalog # BCA-HF254



negative control protein respectively. FITC signal was used to evaluate the binding activity (QC tested).

Background

Tumor necrosis factor receptor superfamily member 17 (TNFRSF17) is also known as B-cell maturation protein (BCMA), CD antigen CD269, which is a member of the TNF-receptor superfamily. TNFRSF17 contains one TNFR-Cys repeat. TNFRSF17 is expressed in mature B-cells, but not in T-cells or monocytes. TNFRSF17 is receptor for TNFSF13B/BLyS/BAFF and TNFSF13/APRIL. TNFRSF17 promotes B-cell survival and plays a role in the regulation of humoral immunity.

TNFRSF17 can activate NF-kappa-B and JNK.

Clinical and Translational Updates

Discounts, Gifts,
and more!

