



**Synonym**

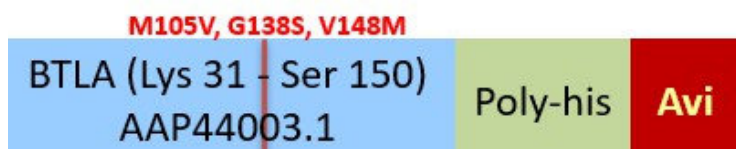
BTLA,CD272

**Source**

Biotinylated Human BTLA (31-150) (M105V, G138S, V148M), Fc,Avitag(BTA-H82F5) is expressed from human 293 cells (HEK293). It contains AA Lys 31 - Ser 150 (Accession # [AAP44003.1](#) (M105V,G138S,V148M)).

Predicted N-terminus: Lys 31

**Molecular Characterization**



This protein carries a human IgG1 Fc tag at the C-terminus, followed by an Avi tag (Avitag™).

The protein has a calculated MW of 41.9 kDa. The protein migrates as 53-60 kDa under reducing (R) condition (SDS-PAGE) due to glycosylation.

**Labeling**

*Biotinylation of this product is performed using Avitag™ technology. Briefly, the single lysine residue in the Avitag is enzymatically labeled with biotin.*

**Protein Ratio**

Passed as determined by the HABA assay / binding ELISA.

**Endotoxin**

Less than 1.0 EU per µg by the LAL method.

**Purity**

>95% as determined by SDS-PAGE.

**Formulation**

Lyophilized from 0.22 µm filtered solution in 50 mM Tris, 100 mM Glycine, 25 mM Arginine, 150 mM NaCl, pH7.5 with trehalose as protectant.

Contact us for customized product form or formulation.

**Reconstitution**

Please see Certificate of Analysis for specific instructions.

*For best performance, we strongly recommend you to follow the reconstitution protocol provided in the CoA.*

**Storage**

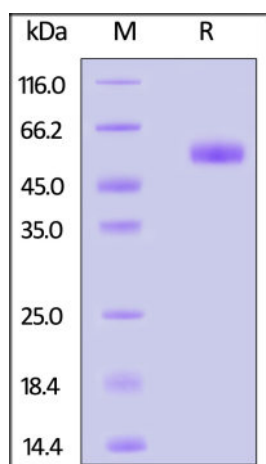
For long term storage, the product should be stored at lyophilized state at -20°C or lower.

*Please avoid repeated freeze-thaw cycles.*

This product is stable after storage at:

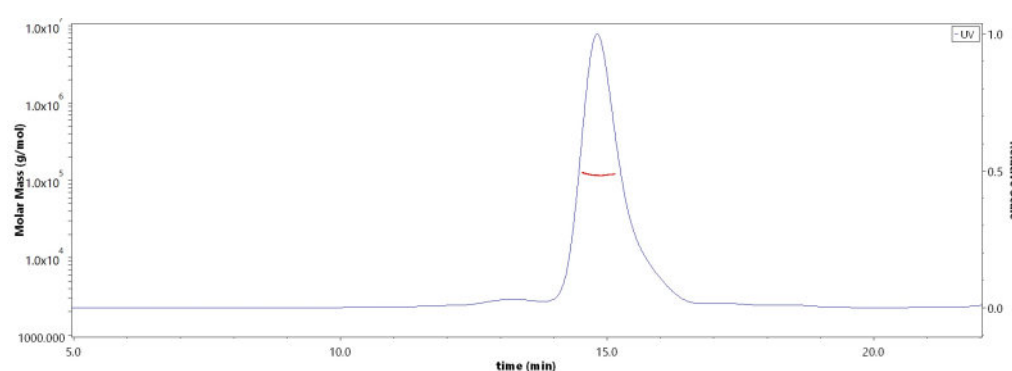
- -20°C to -70°C for 12 months in lyophilized state;
- -70°C for 3 months under sterile conditions after reconstitution.

**SDS-PAGE**



Biotinylated Human BTLA (31-150) (M105V, G138S, V148M), Fc,Avitag on SDS-PAGE under reducing (R) condition. The gel was stained with Coomassie Blue. The purity of the protein is greater than 95%.

**SEC-MALS**



The purity of Biotinylated Human BTLA (31-150) (M105V, G138S, V148M), Fc,Avitag (Cat. No. BTA-H82F5) is more than 85% and the molecular weight of this protein is around 108-128 kDa verified by SEC-MALS.

[Report](#)

**Bioactivity-ELISA**

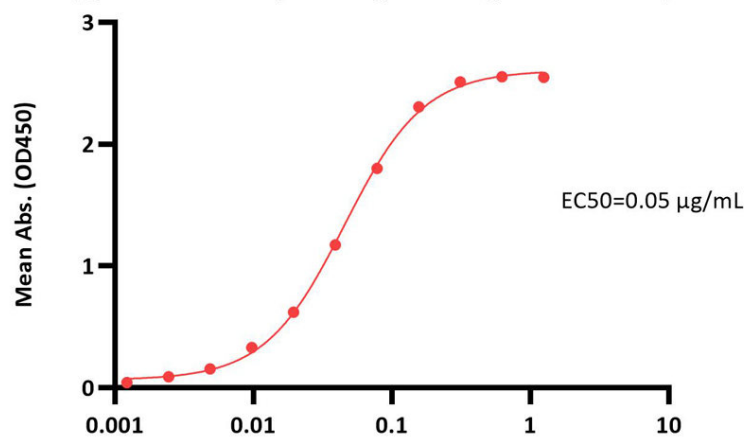
Discounts, Gifts,  
and more!





**Biotinylated Human BTLA (31-150) (M105V, G138S, V148M), Fc,Avitag ELISA**

0.5 µg of Human HVEM, Mouse IgG2a Fc Tag, low endotoxin per well

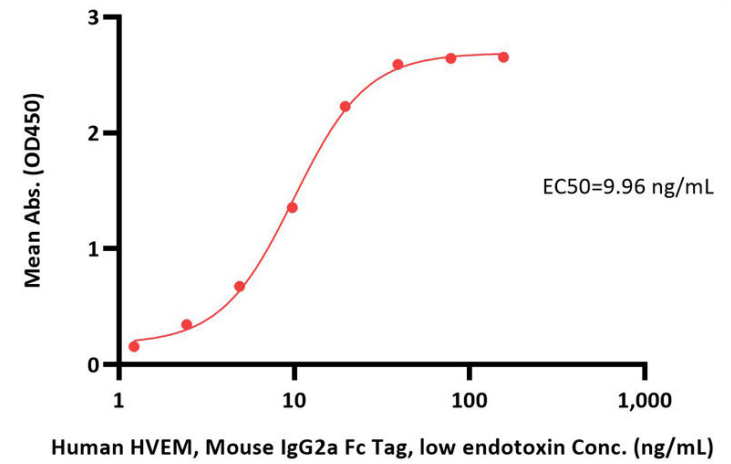


Biotinylated Human BTLA (31-150) (M105V, G138S, V148M), Fc,Avitag Conc. (µg/mL)

Immobilized Human HVEM, Mouse IgG2a Fc Tag, low endotoxin at 5 µg/mL (100 µL/well) can bind Biotinylated Human BTLA (31-150) (M105V, G138S, V148M), Fc,Avitag (Cat. No. BTA-H82F5) with a linear range of 0.001-0.313 µg/mL (QC tested).

**Biotinylated Human BTLA (31-150) (M105V, G138S, V148M), Fc,Avitag ELISA**

0.1 µg of Biotinylated Human BTLA (31-150) (M105V, G138S, V148M), Fc,Avitag per well



Human HVEM, Mouse IgG2a Fc Tag, low endotoxin Conc. (ng/mL)

Immobilized Biotinylated Human BTLA (31-150) (M105V, G138S, V148M), Fc,Avitag (Cat. No. BTA-H82F5) at 1 µg/mL (100 µL/well) on streptavidin (Cat. No. STN-N5116) precoated (0.5 µg/well) plate can bind Human HVEM, Mouse IgG2a Fc Tag, low endotoxin with a linear range of 1-20 ng/mL (Routinely tested).

## Background

B- and T-lymphocyte attenuator (BTLA) is also known as B- and T-lymphocyte-associated protein, CD antigen CD272. BTLA contains one Ig-like V-type (immunoglobulin-like) domain. As a lymphocyte inhibitory receptor, BTLA / CD272 inhibits lymphocytes during immune response. BTLA / CD272 can interact with tyrosine phosphatases PTPN6/SHP-1 and PTPN11/SHP-2, and interact with TNFRSF14/HVEM.

## Clinical and Translational Updates

Discounts, Gifts,  
and more!

