

**Synonym**

BTLA,CD272

**Source**

Mouse BTLA, Fc Tag (BTA-M5253) is expressed from human 293 cells (HEK293). It contains AA Glu 30 - Gly 176 (Accession # [Q32MV9](#)).

Predicted N-terminus: Glu 30

**Molecular Characterization**

BTLA(Glu 30 - Gly 176) Q32MV9	Fc(Glu 99 - Lys 330) P01857
----------------------------------	--------------------------------

This protein carries a human IgG1 Fc tag at the C-terminus.

The protein has a calculated MW of 42.8 kDa. The protein migrates as 55-66 kDa under reducing (R) condition (SDS-PAGE) due to glycosylation.

**Endotoxin**

Less than 1.0 EU per µg by the LAL method.

**Purity**

>95% as determined by SDS-PAGE.

>90% as determined by SEC-MALS.

**Formulation**

Lyophilized from 0.22 µm filtered solution in Tris with Glycine, Arginine and NaCl, pH7.5. Normally trehalose is added as protectant before lyophilization.

Contact us for customized product form or formulation.

**Reconstitution**

Please see Certificate of Analysis for specific instructions.

*For best performance, we strongly recommend you to follow the reconstitution protocol provided in the CoA.*

**Storage**

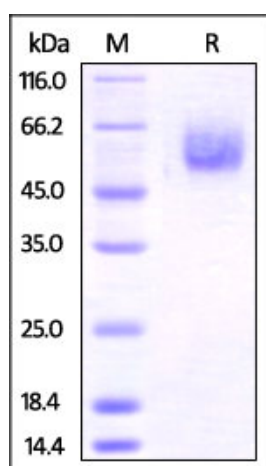
For long term storage, the product should be stored at lyophilized state at -20°C or lower.

*Please avoid repeated freeze-thaw cycles.*

This product is stable after storage at:

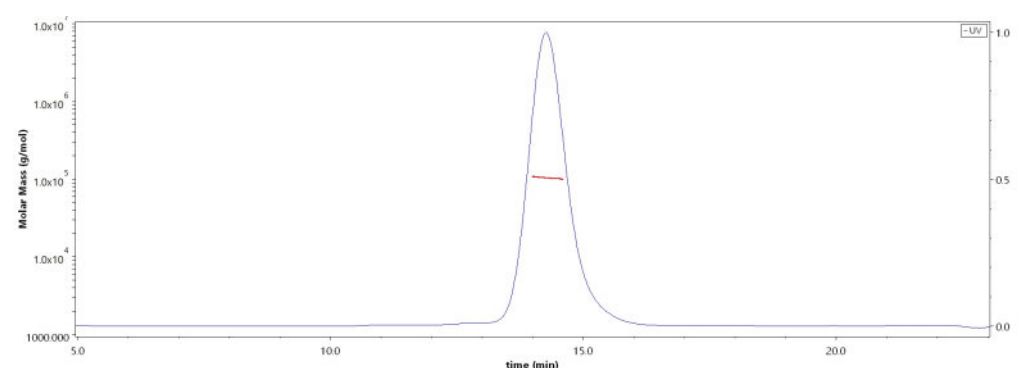
- -20°C to -70°C for 12 months in lyophilized state;
- -70°C for 3 months under sterile conditions after reconstitution.

**SDS-PAGE**



Mouse BTLA, Fc Tag on SDS-PAGE under reducing (R) condition. The gel was stained overnight with Coomassie Blue. The purity of the protein is greater than 95%.

**SEC-MALS**



The purity of Mouse BTLA, Fc Tag (Cat. No. BTA-M5253) is more than 90% and the molecular weight of this protein is around 90-120 kDa verified by SEC-MALS.

[Report](#)

**Background**

B- and T-lymphocyte attenuator (BTLA) is also known as B- and T-lymphocyte-associated protein, CD antigen CD272. BTLA contains one Ig-like V-type (immunoglobulin-like) domain. As a lymphocyte inhibitory receptor, BTLA / CD272 inhibits lymphocytes during immune response. BTLA / CD272 can interact with tyrosine phosphatases PTPN6/SHP-1 and PTPN11/SHP-2, and interact with TNFRSF14/HVEM.

**Clinical and Translational Updates**

## Mouse BTLA Protein, Fc Tag (MALS verified)

Catalog # BTA-M5253



Please contact us via [TechSupport@acrobiosystems.com](mailto:TechSupport@acrobiosystems.com) if you have any question on this product.