

**Synonym**

CA125,CA-125,CA125MUC-16,FLJ14303,MUC16,mucin 16,mucin-16

**Source**

Rhesus macaque CA125 (13647-14291), His Tag(CA5-R52H6) is expressed from human 293 cells (HEK293). It contains AA Pro 13647 - Pro 14291

(Accession # [XP\\_015296314.1](#) ).

Predicted N-terminus: Pro 13647

**Molecular Characterization**

CA125(Pro 13647 - Pro 14291) XP_015296314.1	Poly-his
--	----------

This protein carries a polyhistidine tag at the C-terminus

The protein has a calculated MW of 73.9 kDa. The protein migrates as 95-140 kDa under reducing (R) condition (SDS-PAGE) due to glycosylation.

**Endotoxin**

Less than 0.1 EU per µg by the LAL method.

**Purity**

&gt;95% as determined by SDS-PAGE.

&gt;90% as determined by SEC-MALS.

**Formulation**

Lyophilized from 0.22 µm filtered solution in PBS, pH7.4 with trehalose as protectant.

Contact us for customized product form or formulation.

**Reconstitution**

Please see Certificate of Analysis for specific instructions.

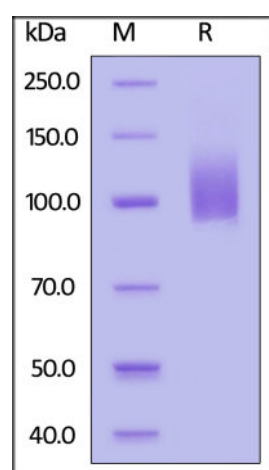
*For best performance, we strongly recommend you to follow the reconstitution protocol provided in the CoA.***Storage**

For long term storage, the product should be stored at lyophilized state at -20°C or lower.

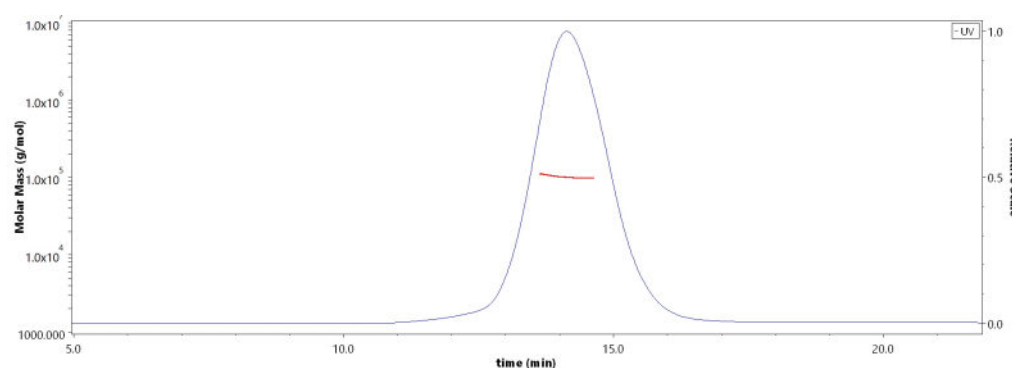
*Please avoid repeated freeze-thaw cycles.*

This product is stable after storage at:

- -20°C to -70°C for 12 months in lyophilized state;
- -70°C for 3 months under sterile conditions after reconstitution.

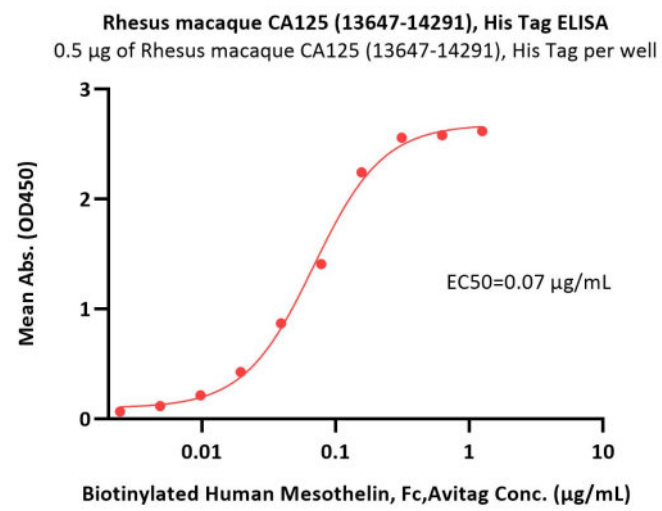
**SDS-PAGE**

Rhesus macaque CA125 (13647-14291), His Tag on SDS-PAGE under reducing (R) condition. The gel was stained with Coomassie Blue. The purity of the protein is greater than 95%.

**Bioactivity-ELISA****SEC-MALS**

The purity of Rhesus macaque CA125 (13647-14291), His Tag (Cat. No. CA5-R52H6) is more than 90% and the molecular weight of this protein is around 90-110 kDa verified by SEC-MALS.

[Report](#)



Immobilized Rhesus macaque CA125 (13647-14291), His Tag (Cat. No. CA5-R52H6) at 5 µg/mL (100 µL/well) can bind Biotinylated Human Mesothelin, Fc,Avitag (Cat. No. MSN-H82F6) with a linear range of 0.002-0.313 µg/mL (QC tested).

### Background

The CA125, also known as the MUC16, is a mucin protein that may be found in type I transmembrane or secreted forms that are used monitor the progress of epithelial ovarian cancer therapy. The CA 125 molecule is almost certainly a glycoprotein with a predominance of O-linkages. It is heterogeneous with regard to both size and charge, most likely due to continuous deglycosylation of side chains during its life-span in bodily fluids. It exists as a very large complex (perhaps as much as 4 million daltons) under natural conditions.

### Clinical and Translational Updates

Please contact us via [TechSupport@acrobiosystems.com](mailto:TechSupport@acrobiosystems.com) if you have any question on this product.