



Synonym

C-C motif chemokine 20, Beta-chemokine exodus-1, CC chemokine LARC, Liver and activation-regulated chemokine, Macrophage inflammatory protein 3 alpha, MIP-3-alpha, Small-inducible cytokine A20, CCL20

Source

Human CCL20 Protein, His Tag(CC0-H51H3) is expressed from E. coli cells. It contains AA Ala 27 - Met 96 (Accession # [P78556-1](#)).

Predicted N-terminus: Met

Molecular Characterization

CCL20(Ala 27 - Met 96)
P78556-1 Poly-his

This protein carries a polyhistidine tag at the C-terminus.

The protein has a calculated MW of 10 kDa. The protein migrates as 11-12 kDa when calibrated against [Star Ribbon Pre-stained Protein Marker](#) under reducing (R) condition (SDS-PAGE).

Endotoxin

Less than 1.0 EU per µg by the LAL method.

Purity

>90% as determined by SDS-PAGE.

>90% as determined by SEC-HPLC.

Formulation

Lyophilized from 0.22 µm filtered solution in 0.085% TFA 30% ACN with trehalose as protectant.

Contact us for customized product form or formulation.

Reconstitution

Please see Certificate of Analysis for specific instructions.

For best performance, we strongly recommend you to follow the reconstitution protocol provided in the CoA.

Storage

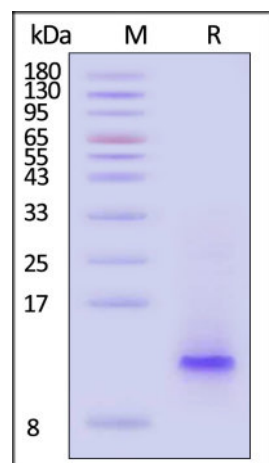
For long term storage, the product should be stored at lyophilized state at -20°C or lower.

Please avoid repeated freeze-thaw cycles.

This product is stable after storage at:

- -20°C to -70°C for 12 months in lyophilized state;
- -70°C for 3 months under sterile conditions after reconstitution.

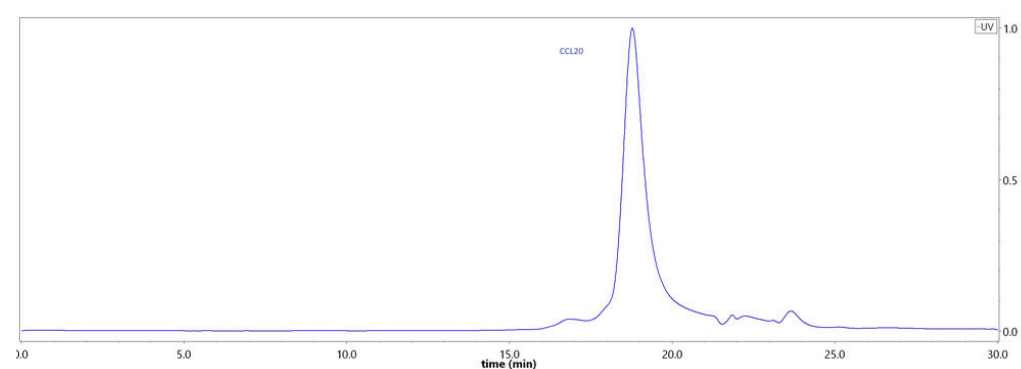
SDS-PAGE



Human CCL20 Protein, His Tag on SDS-PAGE under reducing (R) condition. The gel was stained with Coomassie Blue. The purity of the protein is greater than 90% (With [Star Ribbon Pre-stained Protein Marker](#)).

Bioactivity-ELISA

SEC-HPLC



The purity of Human CCL20 Protein, His Tag (Cat. No. CC0-H51H3) was greater than 90% as determined by SEC-HPLC.

Discounts, Gifts,
and more!

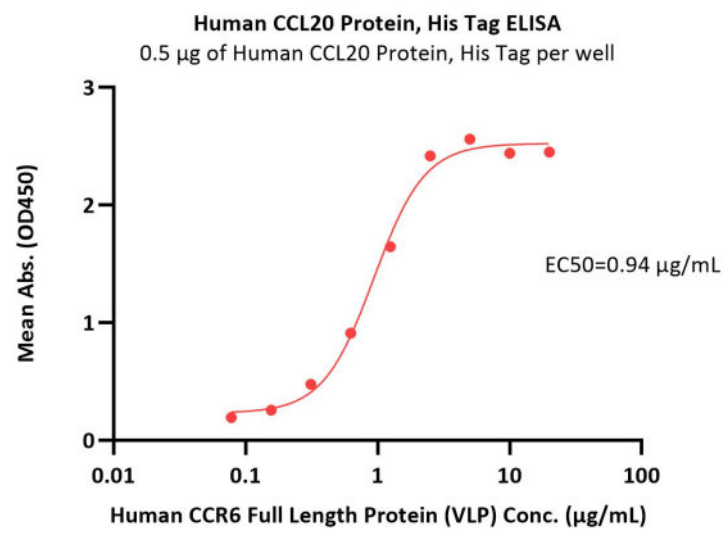


Human CCL20 Protein, His Tag (HPLC verified)

Catalog # CC0-H51H3



BIOSYSTEMS
Acro
Surprise Inside!



Immobilized Human CCL20 Protein, His Tag (Cat. No. CC0-H51H3) at 5 µg/mL (100 µL/well) can bind Human CCR6 Full Length Protein (VLP) (Cat. No. CC6-H52P3) with a linear range of 0.078-2.5 µg/mL (QC tested).

Background

This antimicrobial gene belongs to the subfamily of small cytokine CC genes. Cytokines are a family of secreted proteins involved in immunoregulatory and inflammatory processes. The CC cytokines are proteins characterized by two adjacent cysteines. The protein encoded by this gene displays chemotactic activity for lymphocytes and can repress proliferation of myeloid progenitors. Two transcript variants encoding different isoforms have been found for this gene.

Clinical and Translational Updates

Discounts, Gifts,
and more!



➤ www.acrobiosystems.com

9/10/2024