



Synonym

CCL1,I-309,C-C motif chemokine 1

Source

Human CCL1, Fc Tag(CC1-H5254) is expressed from human 293 cells (HEK293). It contains AA Lys 24 - Lys 96 (Accession # [P22362-1](#)).

Predicted N-terminus: Lys 24

Molecular Characterization

| | |
|-----------------------------------|---------------------------------|
| CCL1(Lys 24 - Lys 96) P22362-1 | Fc(Pro 100 - Lys 330) P01857 |
|-----------------------------------|---------------------------------|

This protein carries a human IgG1 Fc tag at the C-terminus.

The protein has a calculated MW of 34.9 kDa. The protein migrates as 40-43 kDa when calibrated against [Star Ribbon Pre-stained Protein Marker](#) under reducing (R) condition (SDS-PAGE) due to glycosylation.

Endotoxin

Less than 1.0 EU per µg by the LAL method.

Purity

>95% as determined by SDS-PAGE.

>95% as determined by SEC-MALS.

Formulation

Lyophilized from 0.22 µm filtered solution in PBS, pH7.4 with trehalose as protectant.

Contact us for customized product form or formulation.

Reconstitution

Please see Certificate of Analysis for specific instructions.

For best performance, we strongly recommend you to follow the reconstitution protocol provided in the CoA.

Storage

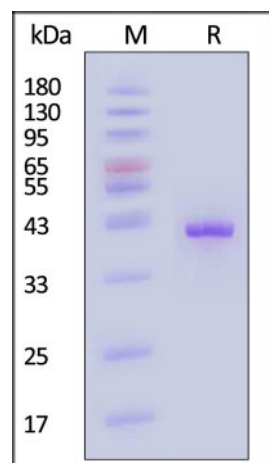
For long term storage, the product should be stored at lyophilized state at -20°C or lower.

Please avoid repeated freeze-thaw cycles.

This product is stable after storage at:

- -20°C to -70°C for 12 months in lyophilized state;
- -70°C for 3 months under sterile conditions after reconstitution.

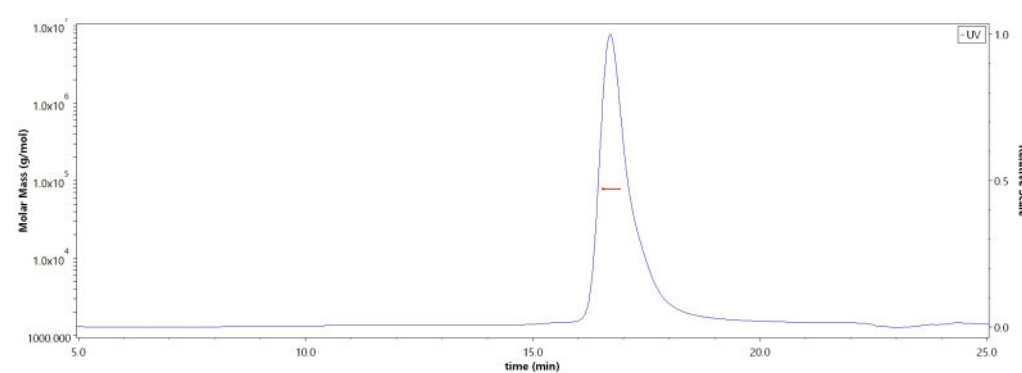
SDS-PAGE



Human CCL1, Fc Tag on SDS-PAGE under reducing (R) condition. The gel was stained with Coomassie Blue. The purity of the protein is greater than 95% (With [Star Ribbon Pre-stained Protein Marker](#)).

Bioactivity-ELISA

SEC-MALS

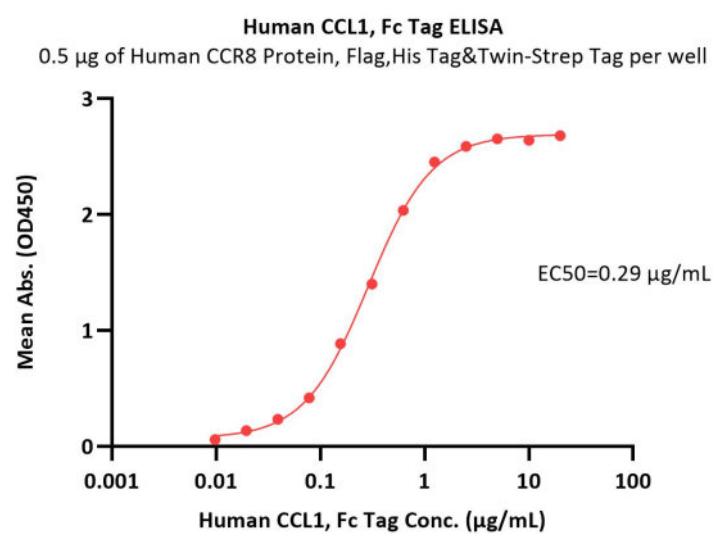


The purity of Human CCL1, Fc Tag (Cat. No. CC1-H5254) is more than 95% and the molecular weight of this protein is around 68-88 kDa verified by SEC-MALS.

[Report](#)

Discounts, Gifts,
and more!





Immobilized Human CCR8 Protein, Flag,His Tag&Twin-Strep Tag (Cat. No. CC8-H52D6) at 5 µg/mL (100 µL/well) can bind Human CCL1, Fc Tag (Cat. No. CC1-H5254) with a linear range of 0.01-0.625 µg/mL (Routinely tested).

Background

Chemokines form a superfamily of secreted proteins involved in immunoregulatory and inflammatory processes. The superfamily is divided into four subfamilies based on the arrangement of the N-terminal cysteine residues of the mature peptide. CCL1, a member of the CC subfamily, is secreted by activated T cells and displays chemotactic activity for monocytes but not for neutrophils. It binds to the chemokine (C-C motif) receptor 8.

Clinical and Translational Updates

Discounts, Gifts,
and more!

