

### Synonym

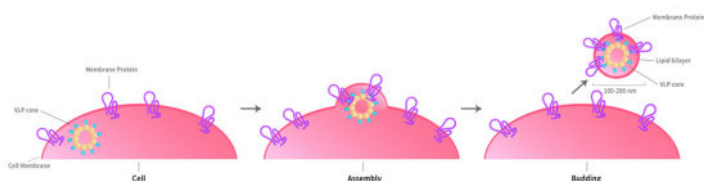
CC chemokine receptor 8,CD198,ChemR1,CKRL1,CKR-L1,CKRL1,CY6,GPRCL1,GPRCY6,GPR-CY6,TER-1

### Source

Human CCR8 Full Length Protein-VLP(CC8-H52P4) is expressed from human 293 cells (HEK293). It contains AA Asp 2 - Leu 355 (Accession # [P51685-1](#)). Predicted N-terminus: Asp

### Molecular Characterization

Virus-like particles(VLPs) are formed by self-assembly of envelop/capsid proteins from viruses. Membrane Proteins can be constituted in-situ with VLPs produced from HEK293 cell cultures. These VLPs concentrate conformationally intact membrane proteins directly on the cell surface and produce soluble, high-concentration proteins perfect for immunization and antibody screening.



The VLPs provide the display of properly folded membrane proteins in their native cellular membrane in a compact size of 100~300 nm diameter (similar to the size of most viruses) making it optimal targets for dendritic cells in vivo and surface attachment for phage display.

### Endotoxin

Less than 1.0 EU per µg by the LAL method.

### Formulation

*The VLPs are highly immunogenic, so the immunization strategy should be optimized (antigen dose, regimen and adjuvant).*

Supplied as 0.2 µm filtered solution in PBS, Arginine, pH7.4 with trehalose as protectant.

Contact us for customized product form or formulation.

### Shipping

*This product is supplied and shipped as sterile liquid solution with dry ice, please inquire the shipping cost.*

### Storage

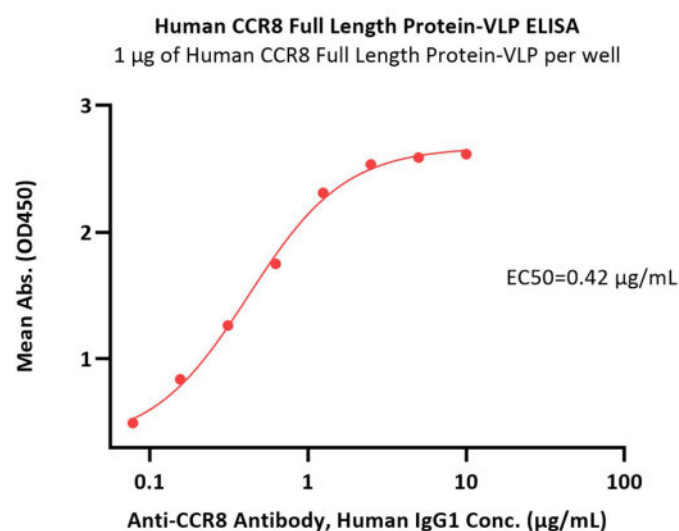
*Please avoid repeated freeze-thaw cycles.*

This product is stable after storage at:

- The product MUST be stored at -70°C or lower upon receipt;
- -70°C for 12 months under sterile conditions.

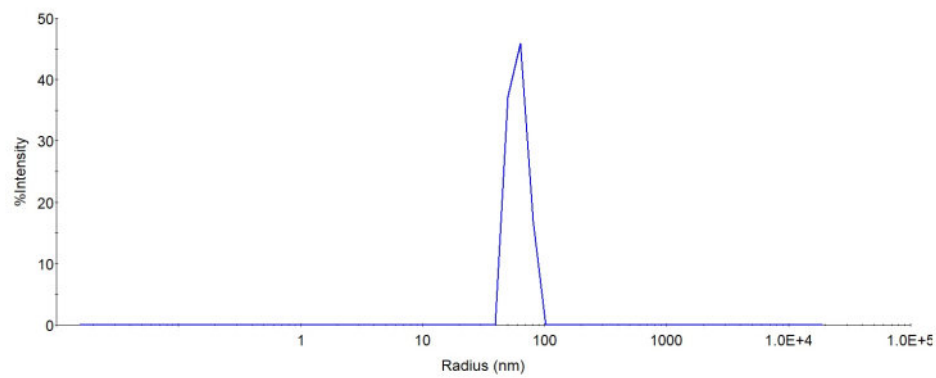
\*The isotype control of empty/mock VLP (Cat. No. [VLP-N5213](#)) is sold separately and not included in protein, you can follow [this link](#) for product information.

### Bioactivity-ELISA



Immobilized Human CCR8 Full Length Protein-VLP (Cat. No. CC8-H52P4) at 10 µg/mL (100 µL/well) can bind Anti-CCR8 Antibody, Human IgG1 with a linear range of 0.078-2.5 µg/mL (QC tested).

### Identity-DLS



The mean peak Radius of VLP is 55-75 nm with more than 95% intensity as determined by dynamic light scattering (DLS).

## Background

This entry represents CC chemokine receptor 8 (CCR8), which is expressed predominantly in lymphoid tissues and has also been found in glomerular podocytes and human umbilical vein endothelial cells (HUVECs). CCR8 is associated with Th2 lymphocytes, which are critical for allergy, and has a role in lymphocyte activation, migration, proliferation and differentiation and in allergic diseases. CCR8 binds to CCL1 (also known as I-309) and to CCL16 (also known as liver expressed chemokine). It also exhibits a high affinity for three chemokines of viral origin: vMIP-I, vMIP-II and vMCC-I.

## Clinical and Translational Updates

Please contact us via [TechSupport@acrobiosystems.com](mailto:TechSupport@acrobiosystems.com) if you have any question on this product.