



**Synonym**

CD33,SIGLEC3,gp67

**Source**

Human Siglec-3, Fc Tag(CD3-H5257) is expressed from human 293 cells (HEK293). It contains AA Asp 18 - His 259 (Accession # [AAH28152.1](#)).

Predicted N-terminus: Asp 18

**Molecular Characterization**

Siglec-3(Asp 18 - His 259) AAH28152.1	Fc(Pro 100 - Lys 330) P01857
--	---------------------------------

This protein carries a human IgG1 Fc tag at the C-terminus.

The protein has a calculated MW of 52.9 kDa. The protein migrates as 64-85 kDa under reducing (R) condition (SDS-PAGE) due to glycosylation.

**Endotoxin**

Less than 0.1 EU per µg by the LAL method.

**Purity**

>95% as determined by SDS-PAGE.

>90% as determined by SEC-MALS.

**Formulation**

Lyophilized from 0.22 µm filtered solution in Tris with Glycine, Arginine and NaCl, pH7.5 with trehalose as protectant.

Contact us for customized product form or formulation.

**Reconstitution**

Please see Certificate of Analysis for specific instructions.

*For best performance, we strongly recommend you to follow the reconstitution protocol provided in the CoA.*

**Storage**

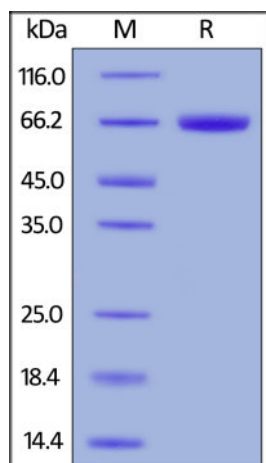
For long term storage, the product should be stored at lyophilized state at -20°C or lower.

*Please avoid repeated freeze-thaw cycles.*

This product is stable after storage at:

- -20°C to -70°C for 12 months in lyophilized state;
- -70°C for 3 months under sterile conditions after reconstitution.

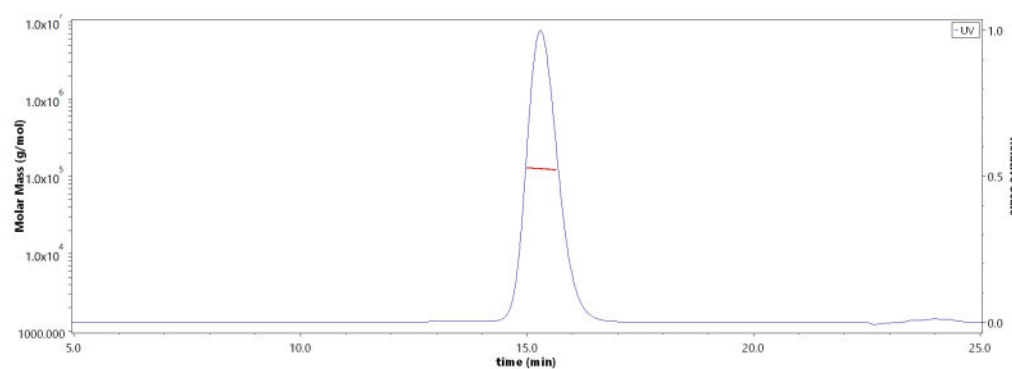
**SDS-PAGE**



Human Siglec-3, Fc Tag on SDS-PAGE under reducing (R) condition. The gel was stained with Coomassie Blue. The purity of the protein is greater than 95%.

**Bioactivity-ELISA**

**SEC-MALS**

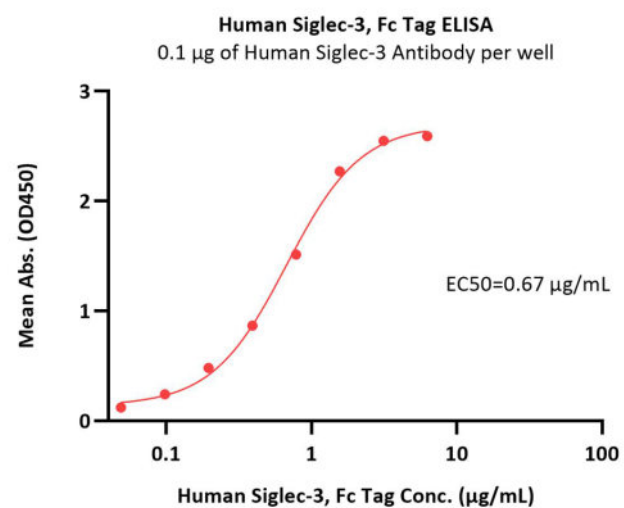


The purity of Human Siglec-3, Fc Tag (Cat. No. CD3-H5257) is more than 90% and the molecular weight of this protein is around 115-145 kDa verified by SEC-MALS.

[Report](#)

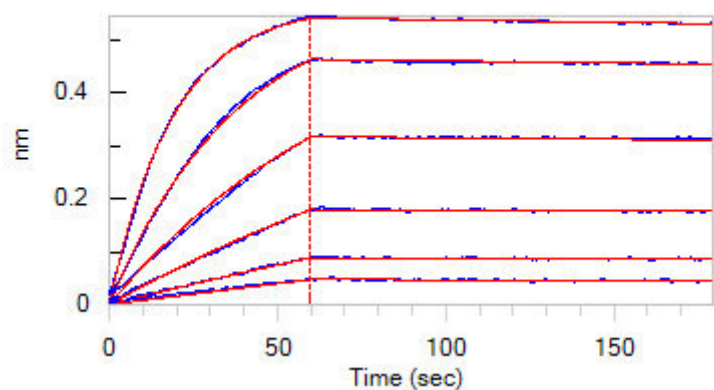
Discounts, Gifts,  
and more!





Immobilized Human Siglec-3 Antibody at 1 µg/mL (100 µL/well) can bind Human Siglec-3, Fc Tag (Cat. No. CD3-H5257) with a linear range of 0.2-2 ng/mL (QC tested).

### Bioactivity-BLI



Loaded Siglec-3 MAb (Mouse IgG1) on AMC Biosensor, can bind Human Siglec-3, Fc Tag (Cat. No. CD3-H5257) with an affinity constant of 0.329 nM as determined in BLI assay (ForteBio Octet Red96e) (Routinely tested).

### Background

Myeloid cell surface antigen CD33 is also known as SIGLEC3, Siglecs (sialic acid binding Iglike lectins) and GP67, is a single-pass type I membrane protein which belongs to the immunoglobulin superfamily and SIGLEC (sialic acid binding Ig-like lectin) family. Human CD33 / Siglec-3 cDNA encodes a 364 amino acid (aa) polypeptide with a hydrophobic signal peptide, an N-terminal Ig-like V-type domain, one Ig-like C2-type domains, a transmembrane region and a cytoplasmic tail. CD33 / Siglec-3 usually considered myeloid-specific, but it can also be found on some lymphoid cells. In the immune response, CD33 / Siglec-3 may act as an inhibitory receptor upon ligand induced tyrosine phosphorylation by recruiting cytoplasmic phosphatase(s) via their SH2 domain(s) that block signal transduction through dephosphorylation of signaling molecules. CD33 / Siglec-3 induces apoptosis in acute myeloid leukemia.

### Clinical and Translational Updates

Discounts, Gifts,  
and more!

