



Synonym

CD3E & CD3D, CD3 delta & CD3 epsilon

Source

Canine CD3E & CD3D Heterodimer Protein, His Tag&Tag Free (CDD-C52W3) is expressed from human 293 cells (HEK293). It contains AA Gln 22 - Leu 122 (CD3E) & Phe 22 - Thr 103 (CD3D) (Accession # [P27597-1](#) (CD3E) & [XP_536556.1](#) (CD3D)).

Predicted N-terminus: Gln 22 (CD3E) & Phe 22 (CD3D)

Molecular Characterization

CD3E (Gln 22 - Leu 122) P27597-1	Poly-his
CD3D (Phe 22 - Thr 103) XP_536556.1	

Canine CD3E & CD3D Heterodimer Protein, His Tag&Tag Free is produced by co-expression of CD3E and CD3D, has a calculated MW of 16.6 kDa (CD3E) and 13.3 kDa (CD3D). Subunit CD3E is fused with a polyhistidine tag at the C-terminus and subunit CD3D contains no tag. As a result of glycosylation, the heterodimer protein migrates as 19-20 kDa (CD3E) under reducing (R) condition, and 36-45 kDa (CD3D) under non-reducing (NR) condition (SDS-PAGE).

Endotoxin

Less than 1.0 EU per µg by the LAL method.

Purity

>90% as determined by SDS-PAGE.

>90% as determined by SEC-MALS.

Formulation

Lyophilized from 0.22 µm filtered solution in PBS, pH7.4 with trehalose as protectant.

Contact us for customized product form or formulation.

Reconstitution

Please see Certificate of Analysis for specific instructions.

For best performance, we strongly recommend you to follow the reconstitution protocol provided in the CoA.

Storage

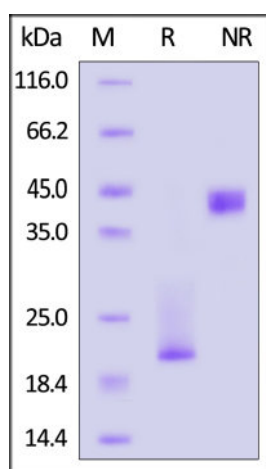
For long term storage, the product should be stored at lyophilized state at -20°C or lower.

Please avoid repeated freeze-thaw cycles.

This product is stable after storage at:

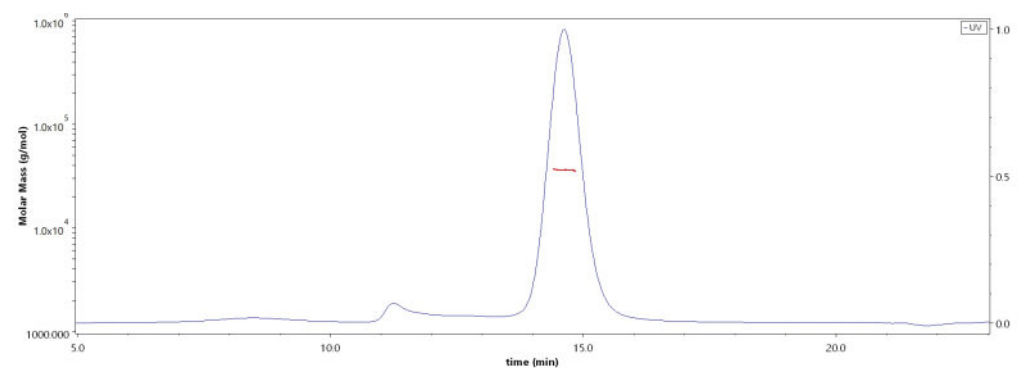
- -20°C to -70°C for 12 months in lyophilized state;
- -70°C for 3 months under sterile conditions after reconstitution.

SDS-PAGE



Canine CD3E & CD3D Heterodimer Protein, His Tag&Tag Free on SDS-PAGE under reducing (R) and non-reducing (NR) conditions. The gel was stained with Coomassie Blue. The purity of the protein is greater than 90%.

SEC-MALS



The purity of Canine CD3E & CD3D Heterodimer Protein, His Tag&Tag Free (Cat. No. CDD-C52W3) is more than 90% and the molecular weight of this protein is around 30-44 kDa verified by SEC-MALS.

[Report](#)

Background



Canine CD3 epsilon & CD3 delta Heterodimer Protein, His Tag&Tag Free (MALS verified)

Catalog # CDD-C52W3



BIOSYSTEMS
Acro

T-cell surface glycoprotein CD3 delta & CD3 epsilon chain, also known as CD3D & CD3E or CD3D&CD3E respectively, are single-pass type I membrane proteins. CD3D, together with CD3- epsilon(CD3E) , CD3-gamma and CD3-zeta, and the T-cell receptor alpha/beta and gamma/delta heterodimers, forms the T cell receptor-CD3 complex. T cell receptor-CD3 complex plays an important role in coupling antigen recognition to several intracellular signal-transduction pathways.

Clinical and Translational Updates

Discounts, Gifts,
and more!



➤ www.acrobiosystems.com

7/18/2024