

Synonym

CD85J,LILRB1,CD85,ILT2,LIR1,MIR7

Source

Biotinylated Human LILRB1, Fc,Avitag(CDJ-H82F7) is expressed from human 293 cells (HEK293). It contains AA Gly 24 - His 458 (Accession # [D9IDM8-1](#)). Predicted N-terminus: Gly 24

Molecular Characterization

LILRB1(Gly 24 - His 458) D9IDM8-1	Fc(Pro 100 - Lys 330) P01857	Avi
--------------------------------------	---------------------------------	-----

This protein carries a human IgG1 Fc tag at the C-terminus, followed by a Avi tag (Avitag™)

The protein has a calculated MW of 75.6 kDa. The protein migrates as 100-116 kDa under reducing (R) condition, and 150 kDa under non-reducing (NR) condition (SDS-PAGE) due to glycosylation.

Labeling

Biotinylation of this product is performed using Avitag™ technology. Briefly, the single lysine residue in the Avitag is enzymatically labeled with biotin.

Protein Ratio

Passed as determined by the HABA assay / binding ELISA.

Endotoxin

Less than 1.0 EU per µg by the LAL method.

Purity

>95% as determined by SDS-PAGE.

Formulation

Lyophilized from 0.22 µm filtered solution in Tris with Glycine, Arginine and NaCl, pH7.5 with trehalose as protectant.

Contact us for customized product form or formulation.

Reconstitution

Please see Certificate of Analysis for specific instructions.

For best performance, we strongly recommend you to follow the reconstitution protocol provided in the CoA.

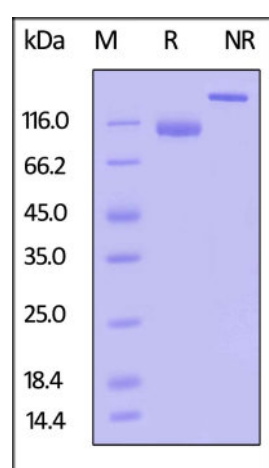
Storage

For long term storage, the product should be stored at lyophilized state at -20°C or lower.

Please avoid repeated freeze-thaw cycles.

This product is stable after storage at:

- -20°C to -70°C for 12 months in lyophilized state;
- -70°C for 3 months under sterile conditions after reconstitution.

SDS-PAGE

Biotinylated Human LILRB1, Fc,Avitag on SDS-PAGE under reducing (R) and non-reducing (NR) conditions. The gel was stained overnight with Coomassie Blue. The purity of the protein is greater than 95%.

Background

LILRB1 (Uniprot No. D9IDM8-1) is a variant that correlates with the low expression of LILRB1 on NK cells. It reflects the diversity of the LILRB1 locus and its influences on expression patterns on NK cells. LILRB1 belongs to the subfamily B class of LIR receptors which contain two or four extracellular immunoglobulin

domains, a transmembrane domain, and two to four cytoplasmic immunoreceptor tyrosine-based inhibitory motifs (ITIMs). The receptor is expressed on immune cells where it binds to MHC class I molecules on antigen-presenting cells and transduces a negative signal that inhibits stimulation of an immune response. It is thought to control inflammatory responses and cytotoxicity to help focus the immune response and limit autoreactivity.

Clinical and Translational Updates

Please contact us via TechSupport@acrobiosystems.com if you have any question on this product.