

# Anti-Cetuximab Antibody (AY28)

Catalog # CEB-Y28



## Source

Anti-Cetuximab Antibody (AY28) is a Mouse monoclonal antibody produced from a hybridoma created by fusing SP2/0 myeloma and Mouse B-lymphocytes.

## Clone

AY28

## Species

Mouse

## Isotype

Mouse IgG1/kappa

## Antibody Type

Hybridoma Monoclonal

## Reactivity

Human

## Immunogen

Cetuximab.

## Specificity

Recognizes Cetuximab specifically, no cross reactivity with other humanized antibodies.

## Application

Application	Recommended Usage
ELISA	0.2-25 ng/mL

## Purity

>95% as determined by SDS-PAGE.

## Purification

Protein A purified/ Protein G purified

## Formulation

Lyophilized from 0.22  $\mu$ m filtered solution in Tris with Glycine, Arginine and NaCl, pH7.5 with trehalose as protectant.

Contact us for customized product form or formulation.

## Reconstitution

Please see Certificate of Analysis for specific instructions.

*For best performance, we strongly recommend you to follow the reconstitution protocol provided in the CoA.*

## Storage

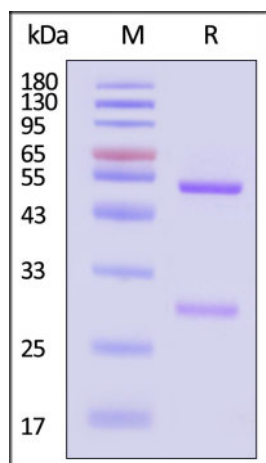
For long term storage, the product should be stored at lyophilized state at  $-20^{\circ}\text{C}$  or lower.

*Please avoid repeated freeze-thaw cycles.*

This product is stable after storage at:

- $4-8^{\circ}\text{C}$  for 12 months in lyophilized state;
- $-70^{\circ}\text{C}$  for 12 months under sterile conditions after reconstitution.

## SDS-PAGE



Anti-Cetuximab Antibody (AY28) on SDS-PAGE under reducing (R) condition. The gel was stained with Coomassie Blue. The purity of the protein

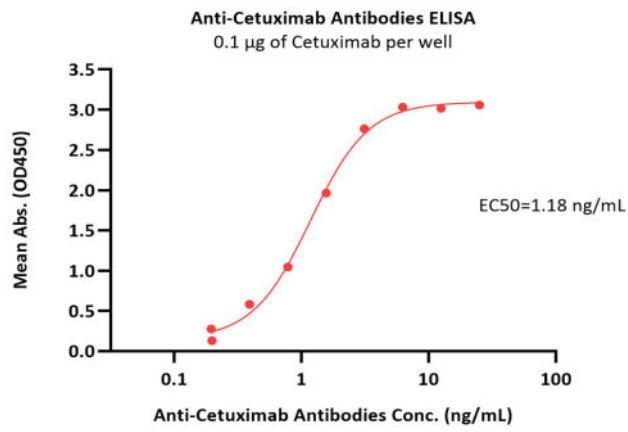
Discounts, Gifts,  
and more!



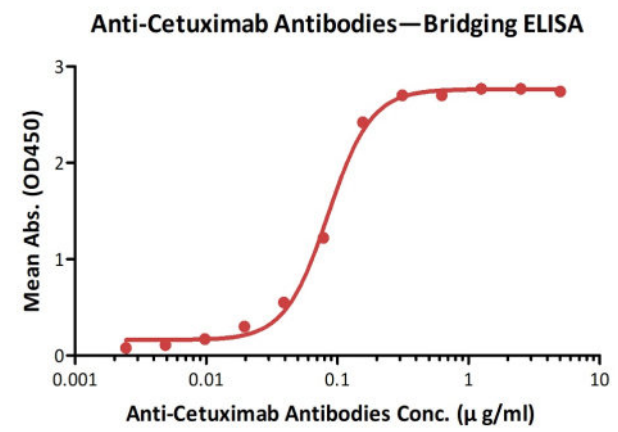


is greater than 95% (With [Star Ribbon Pre-stained Protein Marker](#)).

**Bioactivity-ELISA**

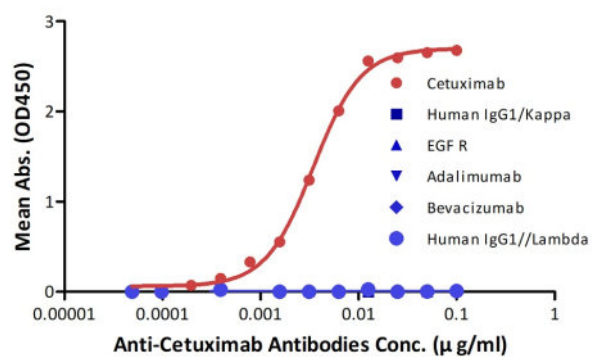


Immobilized Cetuximab (Cat. No. cetuximab) at 1 µg/mL (100 µL/well) can bind Anti-Cetuximab Antibodies (Cat. No. CEB-Y28) with a linear range of 0.2-3 ng/mL (QC tested).



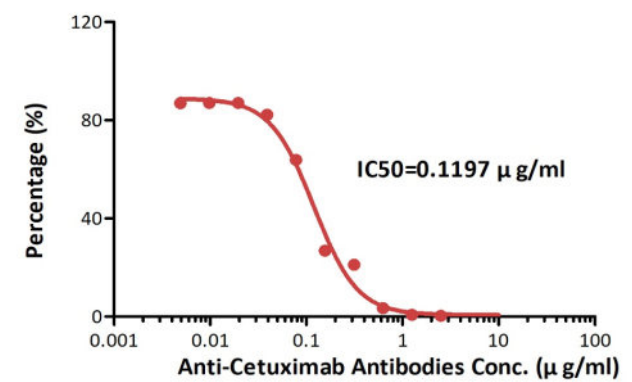
Anti-Cetuximab Antibodies bridging ELISA for Anti-Drug Antibody (ADA) assay development. Immobilized cetuximab at 1 µg/mL, add increasing concentrations of Anti-Cetuximab Antibody (AY28) (Cat. No. CEB-Y28, 10% human serum) and then add biotinylated cetuximab at 5 µg/mL. Detection was performed using HRP-conjugated streptavidin with a sensitivity of 2.4 ng/mL.

**Determination of Anti-Cetuximab Antibodies Specificity**



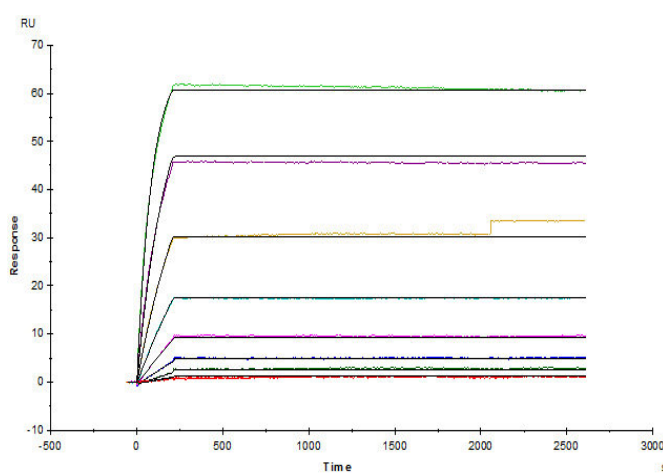
Demonstration of the specificity of Anti-Cetuximab Antibody (AY28) (Cat. No. CEB-Y28) to the cetuximab.

**Anti-Cetuximab Antibodies—Inhibition ELISA**



Measured by its neutralizing ability in a functional ELISA. Immobilized cetuximab at 0.2 µg/mL (100 µL/well) can bind pre-mixed Anti-Cetuximab Antibody (AY28) (Cat. No. CEB-Y28) and Biotinylated Human EGFRvIII, His,Avitag (Cat. No. EGR-H82E0) with an inhibition rate of 100%.

**Bioactivity-SPR**



Anti-Cetuximab Antibody (AY28) (mouse IgG1, Cat. No. CEB-Y28) captured on CM5 chip via anti-mouse antibodies surface, can bind Human cetuximab with an affinity constant of 1.51 pM.

Discounts, Gifts, and more!





## Background

Cetuximab is an epidermal growth factor receptor binding FAB. Cetuximab is composed of the Fv (variable; antigen-binding) regions of the 225 murine EGFr monoclonal antibody specific for the N-terminal portion of human EGFr with human IgG1 heavy and kappa light chain constant (framework) regions.

## Clinical and Translational Updates

Discounts, Gifts,  
and more!

