

Synonym

CLEC-2, CLEC1B, C-type Lectin-like Receptor 2

Source

Human CLEC-2, Fc Tag (CL2-H5254) is expressed from human 293 cells (HEK293). It contains AA Ser 55 - Pro 229 (Accession # [Q9P126-1](#)).

Predicted N-terminus: Ser 55

Molecular Characterization

CLEC-2(Ser 55 - Pro 229) Q9P126-1	Fc(Pro 100 - Lys 330) P01857
--------------------------------------	---------------------------------

This protein carries a human IgG1 Fc tag at the C-terminus

The protein has a calculated MW of 47.2 kDa. The protein migrates as 55-60 kDa under reducing (R) condition (SDS-PAGE) due to glycosylation.

Endotoxin

Less than 1.0 EU per µg by the LAL method.

Purity

>90% as determined by SDS-PAGE.

>90% as determined by SEC-MALS.

Formulation

Lyophilized from 0.22 µm filtered solution in PBS, pH7.4 with trehalose as protectant.

Contact us for customized product form or formulation.

Reconstitution

Please see Certificate of Analysis for specific instructions.

For best performance, we strongly recommend you to follow the reconstitution protocol provided in the CoA.

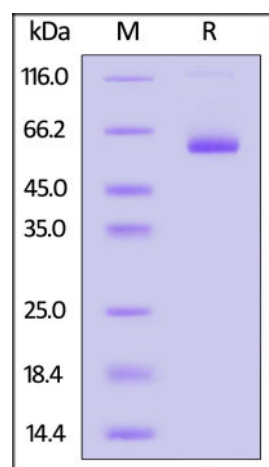
Storage

For long term storage, the product should be stored at lyophilized state at -20°C or lower.

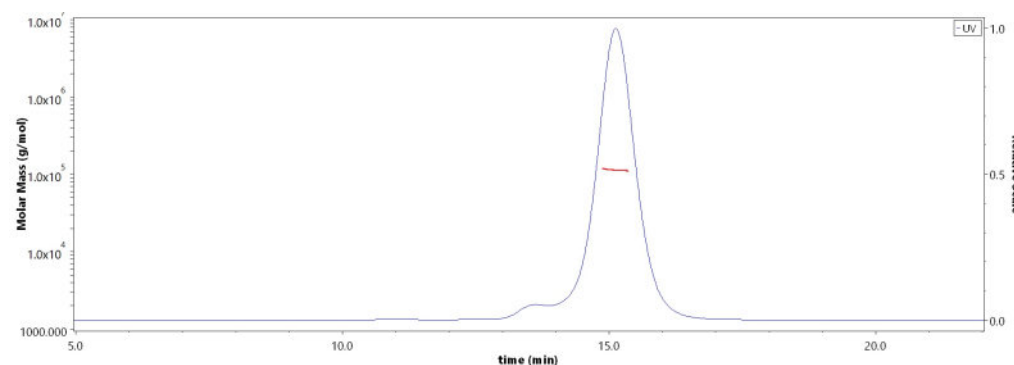
Please avoid repeated freeze-thaw cycles.

This product is stable after storage at:

- -20°C to -70°C for 12 months in lyophilized state;
- -70°C for 3 months under sterile conditions after reconstitution.

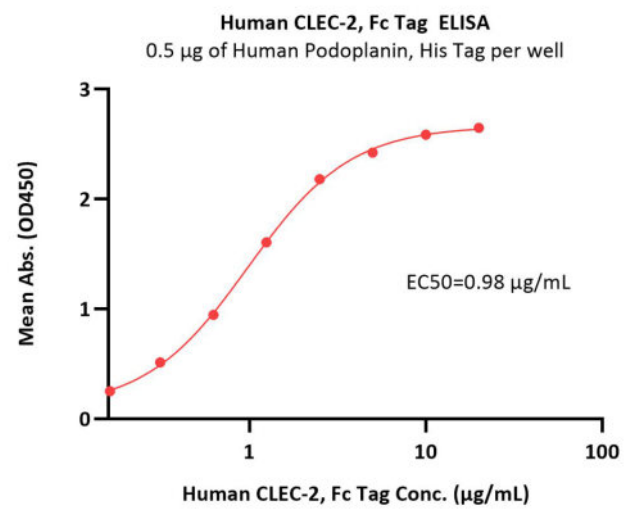
SDS-PAGE

Human CLEC-2, Fc Tag on SDS-PAGE under reducing (R) condition. The gel was stained with Coomassie Blue. The purity of the protein is greater than 90%.

Bioactivity-ELISA**SEC-MALS**

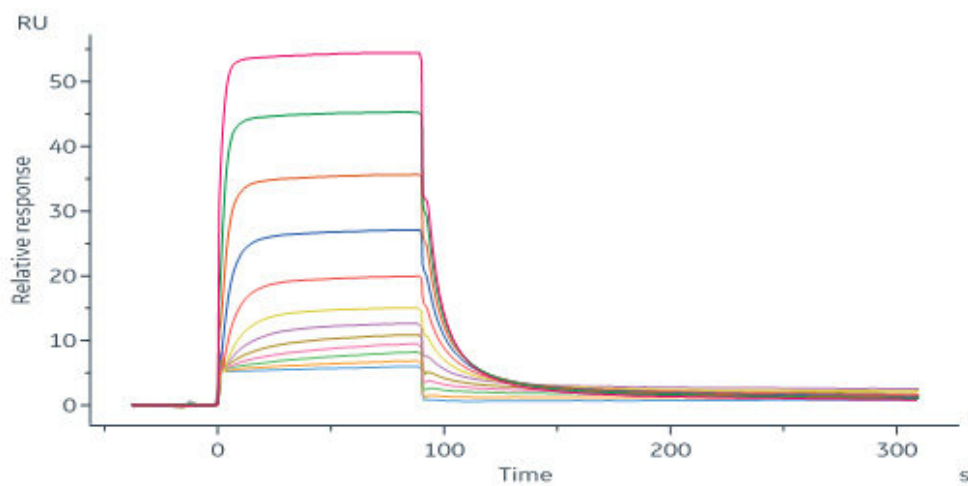
The purity of Human CLEC-2, Fc Tag (Cat. No. CL2-H5254) is more than 90% and the molecular weight of this protein is around 100-125 kDa verified by SEC-MALS.

[Report](#)



Immobilized Human Podoplanin, His Tag (Cat. No. PON-H52H3) at 5 µg/mL (100 µL/well) can bind Human CLEC-2, Fc Tag (Cat. No. CL2-H5254) with a linear range of 0.313-5 µg/mL (QC tested).

Bioactivity-SPR



Human Podoplanin, His Tag (Cat. No. PON-H52H3) immobilized on CM5 Chip can bind Human CLEC-2, Fc Tag (Cat. No. CL2-H5254) with an affinity constant of 0.495 µM as determined in a SPR assay (Biacore 8K) (QC tested).

Background

C-type lectin-like receptor 2 (CLEC-2) is a hemITAM containing receptor that is highly expressed on platelets and regulates many of the non-classical functions of these cells, including in inflammation and infection.

Clinical and Translational Updates

Please contact us via TechSupport@acrobiosystems.com if you have any question on this product.