



## Source

Monoclonal Anti-DENV 2(strain Thailand/16681/1984)-NS1 Antibody, Human IgG1 (2C8) is a chimeric monoclonal antibody recombinantly expressed from HEK293, which combines the variable region of a mouse monoclonal antibody with Human constant domain.

## Clone

2C8

## Isotype

Human IgG1 | Human Kappa

## Conjugate

Unconjugated

## Antibody Type

Recombinant Monoclonal

## Reactivity

Virus

## Immunogen

Recombinant DENV2 (strain Thailand/16681/1984) NS1 protein is expressed from human 293 cells.

## Specificity

Specifically recognizes DENV2 (strain Thailand/16681/1984) NS1.

## Application

Application	Recommended Usage
ELISA	0.06-31 ng/mL

## Purity

>95% as determined by SDS-PAGE.

## Purification

Protein A purified/ Protein G purified

## Formulation

Lyophilized from 0.22 µm filtered solution in PBS, pH7.4 with trehalose as protectant.

Contact us for customized product form or formulation.

## Reconstitution

Please see Certificate of Analysis for specific instructions.

*For best performance, we strongly recommend you to follow the reconstitution protocol provided in the CoA.*

## Storage

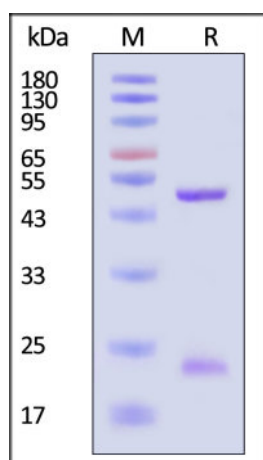
For long term storage, the product should be stored at lyophilized state at -20°C or lower.

*Please avoid repeated freeze-thaw cycles.*

This product is stable after storage at:

- -20°C to -70°C for 12 months in lyophilized state;
- -70°C for 3 months under sterile conditions after reconstitution.

## SDS-PAGE



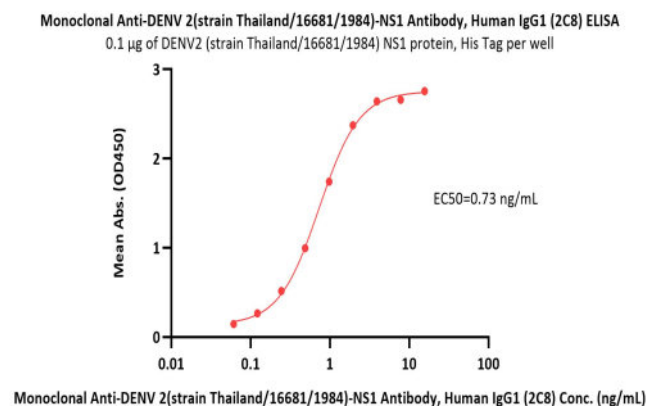
Discounts, Gifts,  
and more!





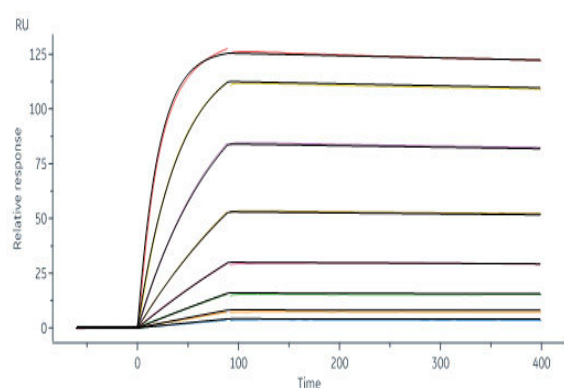
Monoclonal Anti-DENV 2(strain Thailand/16681/1984)-NS1 Antibody, Human IgG1 (2C8) on SDS-PAGE under reducing (R) condition. The gel was stained with Coomassie Blue. The purity of the protein is greater than 95% (With [Star Ribbon Pre-stained Protein Marker](#)).

## Bioactivity-ELISA



Immobilized DENV2 (strain Thailand/16681/1984) NS1 protein, His Tag (Cat. No. NS1-D52H3) at 1 µg/mL (100 µL/well) can bind Monoclonal Anti-DENV 2(strain Thailand/16681/1984)-NS1 Antibody, Human IgG1 (2C8) (Cat. No. DE1-M755) with a linear range of 0.06-2 ng/mL (QC tested).

## Bioactivity-SPR



Monoclonal Anti-DENV 2 (strain Thailand/16681/1984)-NS1 Antibody, Human IgG1 (2C8) (Cat. No. DE1-M755) captured on Protein A Chip can bind DENV2 (strain Thailand/16681/1984) NS1 protein, His Tag (Cat. No. NS1-D52H3) with an affinity constant of 86.1 PM as determined in a SPR assay (Biacore 8K) (Routinely tested).

## Background

Dengue is a mosquito-borne viral disease widely spread all over the world transmitted by 4 serotypes of dengue virus (DENV). The symptoms range from mild dengue fever to dengue hemorrhagic fever (DHF) and dengue shock syndrome (DSS) with high mortality. Currently, most of the studies on DENV vaccines emphasize on its envelope protein (i.e., Sanofi's tetravalent dengue vaccine Dengvaxia). However, the fact pointing out that the vaccines with Envelope protein may could have negative effect on people never infected by DENV which makes the non-structural protein NS1 become another great target for vaccine research with its ability to avoid Antibody Dependent Enhancement.

## Clinical and Translational Updates

Discounts, Gifts,  
and more!

