

PE-Labeled Mouse IgG2a Antibody Isotype Control

Catalog # DNP-PM487



BIOSYSTEMS
Acro

Source

Mouse IgG2a Antibody Isotype Control is a monoclonal antibody recombinantly expressed from human 293 cells (HEK293), which provides higher batch consistency and long term security of supply.

Application

Flow Cytometry.

Species

Mouse

Isotype

Mouse IgG2a/kappa

Specificity

Specifically reacts with DNP (Dinitrophenyl) and DNP conjugated proteins, which is normally not present in Humans or animals. Therefore, DNP-PM487 does not react with any antigen of Human or animal cells.

Immunogen

DNP (Dinitrophenyl).

Conjugate

PE

Excitation Wavelength: 488 nm / 561 nm

Emission Wavelength: 575 nm

Recommended Dilution

1:50

Formulation

Lyophilized from 0.22 μ m filtered solution in PBS, 0.2% BSA, pH7.4 with trehalose as protectant.

Contact us for customized product form or formulation.

Reconstitution

Please see Certificate of Analysis for specific instructions.

For best performance, we strongly recommend you to follow the reconstitution protocol provided in the CoA.

Storage

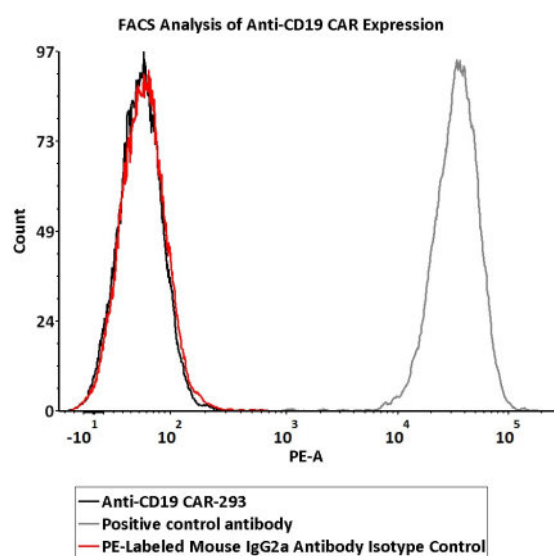
For long term storage, the product should be stored at lyophilized state at -20°C or lower.

Please protect from light and avoid repeated freeze-thaw cycles.

This product is stable after storage at:

- -20°C to -70°C for 24 months in lyophilized state;
- -70°C for 12 months under sterile conditions after reconstitution.

Bioactivity-FACS



Flow cytometric analysis of Anti-CD19 CAR-293 cells staining with PE-Labeled Mouse IgG2a Antibody Isotype Control (Cat. No. DNP-PM487) at 1:50 dilution (2 μ L of the antibody stock solution corresponds to labeling of 1×10^6 cells in a final volume of 100 μ L), compared with positive control antibody. PE signal was used to evaluate the binding activity (QC tested).

Discounts, Gifts,
and more!



➤ www.acrobiosystems.com

7/26/2024



Background

A hapten is a small molecule that can elicit an immune response only when conjugated with a large carrier such as a protein. Typical haptens include drugs, urushiol, quinone, steroids, etc. Peptides and non-protein antigens usually need conjugating to a carrier protein (such as BSA (bovine serum albumin) or KLH (keyhole limpet hemocyanin) to become good immunogens). Additionally, haptens should be administered with an adjuvant to ensure a high quality immune response. It is important that the hapten design (preserving greatly the chemical structure and spatial conformation of target compound), selection of the appropriate carrier protein and the conjugation method are key conditions for the desired specificity anti-hapten antibodies. We design anti-hapten antibodies based on the HaptenDB information.

Clinical and Translational Updates

Discounts, Gifts,
and more!

