

### Synonym

EGFR,ERBB,ERBB1,HER1,PIG61,mENA

### Source

Rhesus macaque EGF R, Fc Tag(EGR-C5252) is expressed from human 293 cells (HEK293). It contains AA Leu 25 - Ser 645 (Accession # [P55245](#)).

Predicted N-terminus: Leu 25

### Molecular Characterization

EGF R(Leu 25 - Ser 645) P55245	Fc(Pro 100 - Lys 330) P01857
-----------------------------------	---------------------------------

This protein carries a human IgG1 Fc tag at the C-terminus

The protein has a calculated MW of 95.3 kDa. The protein migrates as 116-120 kDa under reducing (R) condition (SDS-PAGE) due to glycosylation.

### Endotoxin

Less than 1.0 EU per  $\mu\text{g}$  by the LAL method.

### Purity

>95% as determined by SDS-PAGE.

### Formulation

Lyophilized from 0.22  $\mu\text{m}$  filtered solution in

Tris with Glycine, Arginine and NaCl, pH7.5 with trehalose as protectant.

Contact us for customized product form or formulation.

### Reconstitution

Please see Certificate of Analysis for specific instructions.

*For best performance, we strongly recommend you to follow the reconstitution protocol provided in the CoA.*

### Storage

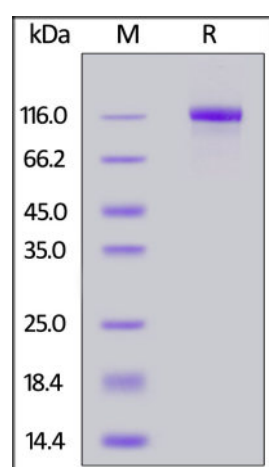
For long term storage, the product should be stored at lyophilized state at  $-20^{\circ}\text{C}$  or lower.

*Please avoid repeated freeze-thaw cycles.*

This product is stable after storage at:

- $-20^{\circ}\text{C}$  to  $-70^{\circ}\text{C}$  for 12 months in lyophilized state;
- $-70^{\circ}\text{C}$  for 3 months under sterile conditions after reconstitution.

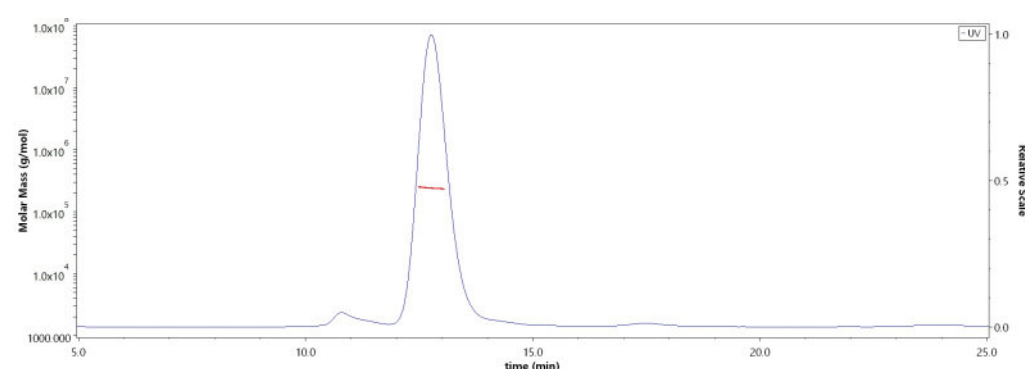
### SDS-PAGE



Rhesus macaque EGF R, Fc Tag on SDS-PAGE under reducing (R) condition. The gel was stained with Coomassie Blue. The purity of the protein is greater than 95%.

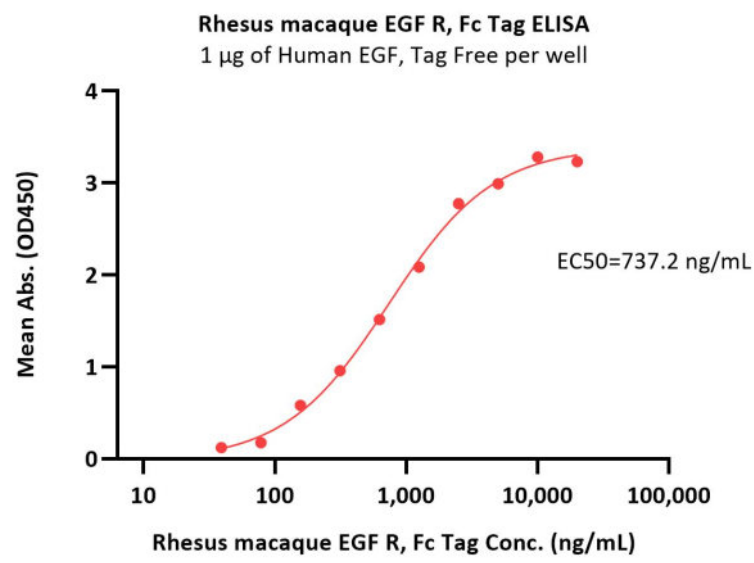
### Bioactivity-ELISA

### SEC-MALS



The purity of Rhesus macaque EGF R, Fc Tag (Cat. No. EGR-C5252) is more than 85% and the molecular weight of this protein is around 225-245 kDa verified by SEC-MALS.

[Report](#)



Immobilized Human EGF, Tag Free at 10 µg/mL (100 µL/well) can bind Rhesus macaque EGF R, Fc Tag (Cat. No. EGR-C5252) with a linear range of 39-1250 ng/mL (QC tested).

## Background

The epidermal growth factor receptor (EGFR; ErbB-1; HER1 in humans) is the cell-surface receptor for members of the epidermal growth factor family (EGF-family) of extracellular protein ligands. The epidermal growth factor receptor is a member of the ErbB family of receptors, a subfamily of four closely related receptor tyrosine kinases: EGFR (ErbB-1), HER2/c-neu (ErbB-2), Her 3 (ErbB-3) and Her 4 (ErbB-4). Mutations affecting EGFR expression or activity could result in cancer.

## Clinical and Translational Updates

Please contact us via [TechSupport@acrobiosystems.com](mailto:TechSupport@acrobiosystems.com) if you have any question on this product.