



## Synonym

EGFR,ERBB,ERBB1,HER1,PIG61,mENA

## Source

FITC-Labeled Human EGF R, His Tag (EGR-HF2H5) is expressed from human 293 cells (HEK293). It contains AA Leu 25 - Ser 645 (Accession # [P00533-1](#)).

It is the FITC labeled form of Human EGF R, His Tag (EGR-H5222).

Predicted N-terminus: Leu 25

## Molecular Characterization

EGF R(Leu 25 - Ser 645)  
P00533-1 Poly-his

This protein carries a polyhistidine tag at the C-terminus.

The protein has a calculated MW of 70.5 kDa. The protein migrates as 85-105 kDa under reducing (R) condition (SDS-PAGE) due to glycosylation.

## Conjugate

FITC

Excitation source: 488 nm spectral line, argon-ion laser

Excitation Wavelength: 488 nm

Emission Wavelength: 535 nm

## Labeling

*The primary amines in the side chains of lysine residues and the N-terminus of the protein are conjugated with FITC using standard chemical labeling method. The residual FITC is removed by molecular sieve treatment during purification process.*

## Protein Ratio

The FITC to protein molar ratio is 2-3.5.

## Endotoxin

Less than 1.0 EU per µg by the LAL method.

## Purity

>95% as determined by SDS-PAGE.

## Formulation

Lyophilized from 0.22 µm filtered solution in PBS, pH7.4 with trehalose as protectant.

Contact us for customized product form or formulation.

## Reconstitution

Please see Certificate of Analysis for specific instructions.

*For best performance, we strongly recommend you to follow the reconstitution protocol provided in the CoA.*

## Storage

For long term storage, the product should be stored at lyophilized state at -20°C or lower.

*Please protect from light and avoid repeated freeze-thaw cycles.*

This product is stable after storage at:

- -20°C to -70°C for 12 months in lyophilized state;
- -70°C for 3 months under sterile conditions after reconstitution.

## SDS-PAGE

Discounts, Gifts,  
and more!

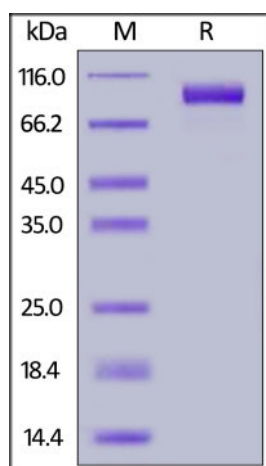


# FITC-Labeled Human EGF R Protein, His Tag

Catalog # EGR-HF2H5

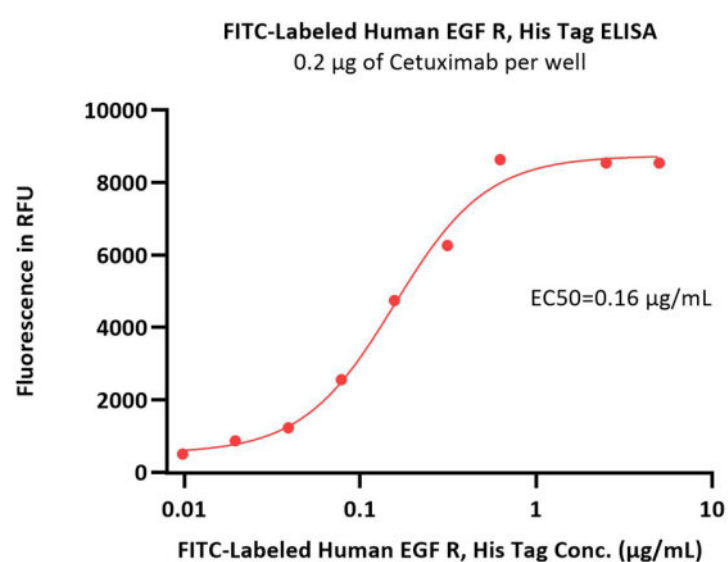


BIOSYSTEMS  
**Acro**



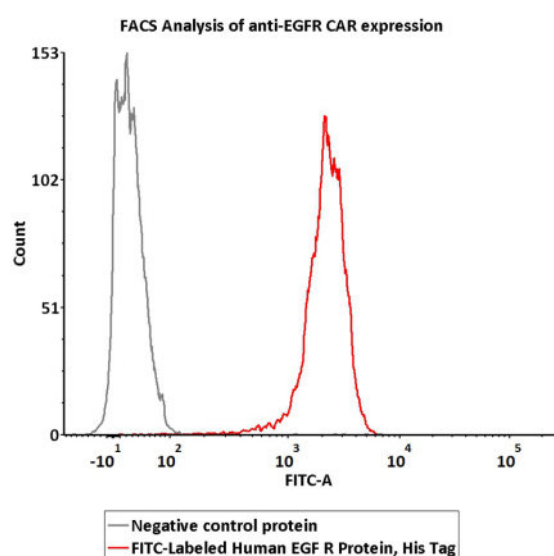
FITC-Labeled Human EGF R, His Tag on SDS-PAGE under reducing (R) condition. The gel was stained with Coomassie Blue. The purity of the protein is greater than 95%.

## Bioactivity-ELISA



Immobilized Cetuximab at 2 µg/mL (100 µL/well) can bind FITC-Labeled Human EGF R, His Tag (Cat. No. EGR-HF2H5) with a linear range of 0.039-0.313 µg/mL (QC tested).

## Bioactivity-FACS



2e5 of Anti-EGFR CAR-293 cells were stained with 100 µL of 1 µg/mL of FITC-Labeled Human EGF R Protein, His Tag (Cat. No. EGR-HF2H5) and negative control protein respectively, FITC signal was used to evaluate the binding activity (QC tested).

Discounts, Gifts,  
and more!





## Background

The epidermal growth factor receptor (EGFR; ErbB-1; HER1 in humans) is the cell-surface receptor for members of the epidermal growth factor family (EGF-family) of extracellular protein ligands. The epidermal growth factor receptor is a member of the ErbB family of receptors, a subfamily of four closely related receptor tyrosine kinases: EGFR (ErbB-1), HER2/c-neu (ErbB-2), Her 3 (ErbB-3) and Her 4 (ErbB-4). Mutations affecting EGFR expression or activity could result in cancer.

## Clinical and Translational Updates

Please contact us via [TechSupport@acrobiosystems.com](mailto:TechSupport@acrobiosystems.com) if you have any question on this product.

Discounts, Gifts,  
and more!

