

**Synonym**

HER4,ErbB4,MGC138404,p180erbB4

**Source**Human ErbB4, His Tag(ER4-H5221) is expressed from human 293 cells (HEK293). It contains AA Gln 26 - Pro 651 (Accession # [NP\\_005226.1](#)).

Predicted N-terminus: Gln 26

**Molecular Characterization**

ErbB4(Gln 26 - Pro 651) NP_005226.1	Poly-his
--	----------

This protein carries a polyhistidine tag at the C-terminus

The protein has a calculated MW of 70.7 kDa. The protein migrates as 95-110 kDa under reducing (R) condition (SDS-PAGE) due to glycosylation.

**Endotoxin**

Less than 1.0 EU per µg by the LAL method.

**Purity**

&gt;95% as determined by SDS-PAGE.

**Formulation**

Lyophilized from 0.22 µm filtered solution in PBS, pH7.4 with trehalose as protectant.

Contact us for customized product form or formulation.

**Reconstitution**

Please see Certificate of Analysis for specific instructions.

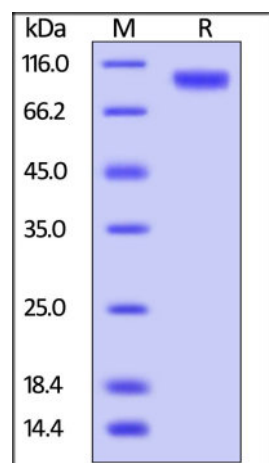
*For best performance, we strongly recommend you to follow the reconstitution protocol provided in the CoA.***Storage**

For long term storage, the product should be stored at lyophilized state at -20°C or lower.

*Please avoid repeated freeze-thaw cycles.*

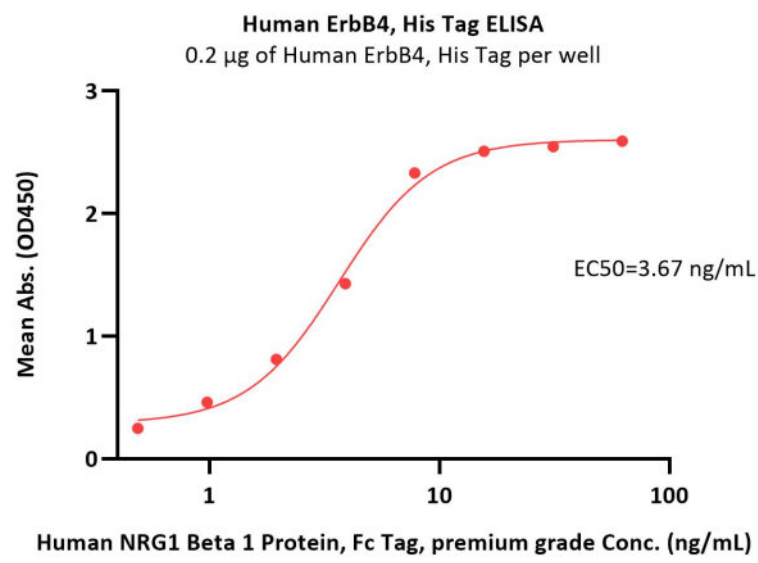
This product is stable after storage at:

- -20°C to -70°C for 12 months in lyophilized state;
- -70°C for 3 months under sterile conditions after reconstitution.

**SDS-PAGE**

Human ErbB4, His Tag on SDS-PAGE under reducing (R) condition. The gel was stained with Coomassie Blue. The purity of the protein is greater than 95%.

**Bioactivity-ELISA**



Immobilized Human ErbB4, His Tag (Cat. No. ER4-H5221) at 2 µg/mL (100 µL/well) can bind Human NRG1 Beta 1, Fc Tag, premium grade (Cat. No. NR1-H5268) with a linear range of 0.5-8 ng/mL (QC tested).

## Background

Receptor tyrosine-protein kinase erbB-4 (ErbB4), also known as Her4, is a single-pass type I transmembrane glycoprotein that is a member of the ErbB family of tyrosine kinase receptors. ErbB family members serve as receptors for the epidermal growth factor (EGF) family of growth factors. ErbB4 is expressed in normal skeletal muscle, heart, pituitary, brain and several breast carcinomas. ERBB4 contains multiple furin-like cysteine rich domains, a tyrosine kinase domain, a phosphatidylinositol-3 kinase binding site and a PDZ domain binding motif. The protein binds to and is activated by neuregulins-2 and -3, heparin-binding EGF-like growth factor and betacellulin. Ligand binding induces a variety of cellular responses including mitogenesis and differentiation. Multiple proteolytic events allow for the release of a cytoplasmic fragment and an extracellular fragment. ErbB4 appears to play important roles in neuronal development, development of the heart and cancer. ERBB4 has been shown to interact with: DLG4, NRG1, STAT5A, and YAP1. Mutations in this gene have been associated with cancer. Other single-nucleotide polymorphisms and a risk haplotype have been linked to schizophrenia.

## Clinical and Translational Updates

Please contact us via [TechSupport@acrobiosystems.com](mailto:TechSupport@acrobiosystems.com) if you have any question on this product.