



Synonym

Follicle Stimulating Hormone

Source

Human FSH alpha & beta Heterodimer Protein, His Tag(FSA-H52H3) is expressed from human 293 cells (HEK293). It contains AA Ala 25 - Ser 116 (FSH alpha) & Asn 19 - Glu 129 (FSH beta) (Accession # [P01215](#) (FSH alpha) & [P01225](#) (FSH beta)).

Predicted N-terminus: Asn 19

Molecular Characterization

This protein carries a polyhistidine tag at the C-terminus.

The protein has a calculated MW of 25.5 kDa. The protein migrates as 40-45 kDa when calibrated against [Star Ribbon Pre-stained Protein Marker](#) under reducing (R) condition (SDS-PAGE) due to glycosylation.

Endotoxin

Less than 0.1 EU per µg by the LAL method.

Purity

>90% as determined by SDS-PAGE.

>90% as determined by SEC-MALS.

Formulation

Lyophilized from 0.22 µm filtered solution in PBS, pH7.4 with trehalose as protectant.

Contact us for customized product form or formulation.

Reconstitution

Please see Certificate of Analysis for specific instructions.

For best performance, we strongly recommend you to follow the reconstitution protocol provided in the CoA.

Storage

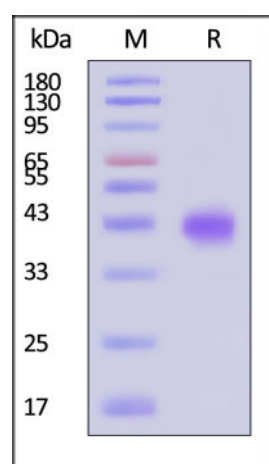
For long term storage, the product should be stored at lyophilized state at -20°C or lower.

Please avoid repeated freeze-thaw cycles.

This product is stable after storage at:

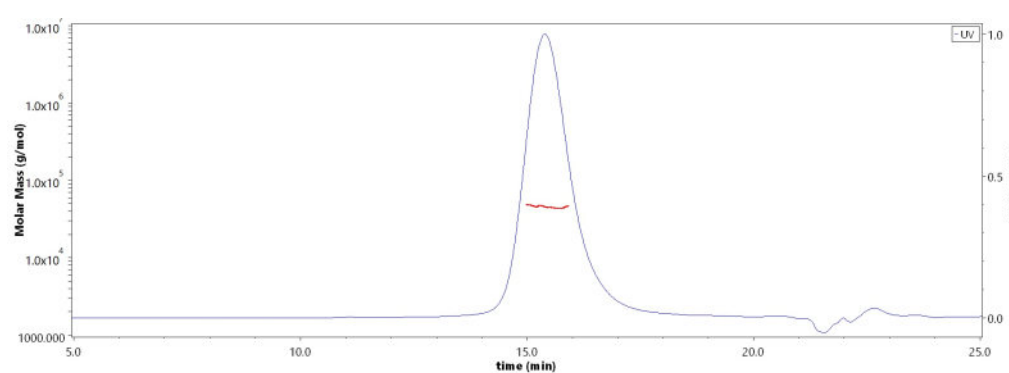
- -20°C to -70°C for 12 months in lyophilized state;
- -70°C for 3 months under sterile conditions after reconstitution.

SDS-PAGE



Human FSH alpha & beta Heterodimer Protein, His Tag on SDS-PAGE under reducing (R) condition. The gel was stained with Coomassie Blue. The purity of the protein is greater than 90% (With [Star Ribbon Pre-stained Protein Marker](#)).

SEC-MALS



The purity of Human FSH alpha & beta Heterodimer Protein, His Tag (Cat. No. FSA-H52H3) is more than 90% and the molecular weight of this protein is around 35-50 kDa verified by SEC-MALS.

[Report](#)

Background

Discounts, Gifts,
and more!



Human FSH alpha & beta Heterodimer Protein, His Tag (MALS verified)

Catalog # FSA-H52H3



BIOSYSTEMS
Acro

Surprise Inside!

Follicle-stimulating hormone (FSH) is a gonadotropin, a glycoprotein polypeptide hormone. FSH is synthesized and secreted by the gonadotropic cells of the anterior pituitary gland and regulates the development, growth, pubertal maturation, and reproductive processes of the body. FSH and luteinizing hormone (LH) work together in the reproductive system. FSH is a 35.5 kDa glycoprotein heterodimer, consisting of two polypeptide units, alpha and beta. Its structure is similar to those of luteinizing hormone (LH), thyroid-stimulating hormone (TSH), and human chorionic gonadotropin (hCG). The alpha subunits of the glycoproteins LH, FSH, TSH, and hCG are identical and consist of 96 amino acids, while the beta subunits vary. Both subunits are required for biological activity. FSH has a beta subunit of 111 amino acids (FSH β), which confers its specific biologic action, and is responsible for interaction with the follicle-stimulating hormone receptor.

Clinical and Translational Updates

Discounts, Gifts,
and more!



www.acrobiosystems.com

7/10/2024