



Synonym

GFR alpha like,GFR alpha-like,GFRAL,GRAL

Source

Cynomolgus GFR alpha-like, His Tag(GFA-C52H6) is expressed from human 293 cells (HEK293). It contains AA Thr 21 - Glu 351 (Accession # [XP_015304775.1](#)).

Predicted N-terminus: Thr 21

Molecular Characterization

GFR alpha-like(Thr 21 - Glu 351)
XP_015304775.1 Poly-his

This protein carries a polyhistidine tag at the C-terminus.

The protein has a calculated MW of 39.6 kDa. The protein migrates as 50-60 kDa under reducing (R) condition (SDS-PAGE) due to glycosylation.

Endotoxin

Less than 1.0 EU per µg by the LAL method.

Purity

>90% as determined by SDS-PAGE.

Formulation

Lyophilized from 0.22 µm filtered solution in PBS, pH7.4 with trehalose as protectant.

Contact us for customized product form or formulation.

Reconstitution

Please see Certificate of Analysis for specific instructions.

For best performance, we strongly recommend you to follow the reconstitution protocol provided in the CoA.

Storage

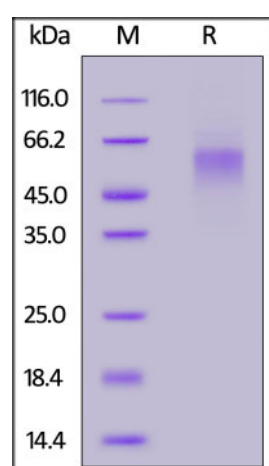
For long term storage, the product should be stored at lyophilized state at -20°C or lower.

Please avoid repeated freeze-thaw cycles.

This product is stable after storage at:

- -20°C to -70°C for 12 months in lyophilized state;
- -70°C for 3 months under sterile conditions after reconstitution.

SDS-PAGE

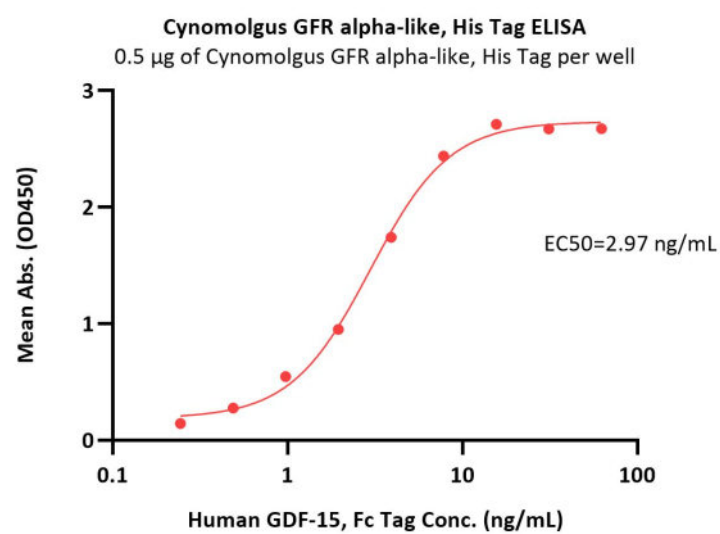


Cynomolgus GFR alpha-like, His Tag on SDS-PAGE under reducing (R) condition. The gel was stained with Coomassie Blue. The purity of the protein is greater than 90%.

Bioactivity-ELISA

Discounts, Gifts,
and more!





Immobilized Cynomolgus GFR alpha-like, His Tag (Cat. No. GFA-C52H6) at 5 µg/mL (100 µL/well) can bind Human GDF-15, Fc Tag (Cat. No. GD5-H5269) with a linear range of 0.2-8 ng/mL (QC tested).

Background

GFR alpha-like is also known as GDNF family receptor alpha-like, GFRAL, C6orf144, UNQ9356, PRO34128. Growth differentiation factor-15 (GDF15) is a circulating protein that has been implicated in multiple biological processes, including energy homeostasis, body weight regulation, and cachexia driven by cancer and chronic disease. GDNF family receptor α -like (GFRAL) was recently identified as the neuronal brainstem receptor responsible for mediating the anorectic actions of GDF15. Brainstem-restricted receptor for GDF15 which regulates food intake, energy expenditure and body weight in response to metabolic and toxin-induced stresses. Upon interaction with its ligand, GDF15, interacts with RET and induces cellular signaling through activation of MAPK- and AKT- signaling pathways.

Clinical and Translational Updates

Discounts, Gifts,
and more!

