



Synonym

Glypican 2, GPC2

Source

Human Glypican 2 Protein, Llama IgG2b Fc Tag(GP2-H5253) is expressed from human 293 cells (HEK293). It contains AA Ser 24 - Ser 553 (Accession # [Q8N158-1](#)).

Molecular Characterization

Glypican 2(Ser 24 - Ser 553) Q8N158-1	LlamaFc(Glu 1 - Ser 243) AAX73259.1
--	--

This protein carries a llama IgG2b Fc tag at the C-terminus.

The protein has a calculated MW of 85.9 kDa. The protein migrates as 35 kDa, 40 kDa, 60 kDa, 95 kDa and 130 kDa when calibrated against [Star Ribbon Pre-stained Protein Marker](#) under reducing (R) condition (SDS-PAGE) due to glycosylation.

Endotoxin

Less than 0.01 EU per μg by the LAL method.

Purity

>90% as determined by SDS-PAGE.

Formulation

Lyophilized from 0.22 μm filtered solution in PBS, pH7.4 with trehalose as protectant.

Contact us for customized product form or formulation.

Reconstitution

Please see Certificate of Analysis for specific instructions.

For best performance, we strongly recommend you to follow the reconstitution protocol provided in the CoA.

Storage

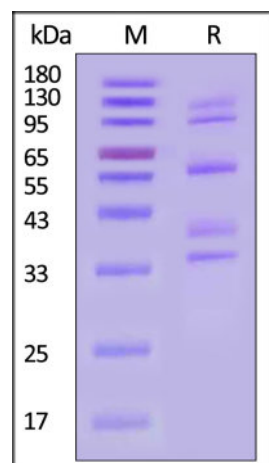
For long term storage, the product should be stored at lyophilized state at -20°C or lower.

Please avoid repeated freeze-thaw cycles.

This product is stable after storage at:

- -20°C to -70°C for 12 months in lyophilized state;
- -70°C for 3 months under sterile conditions after reconstitution.

SDS-PAGE

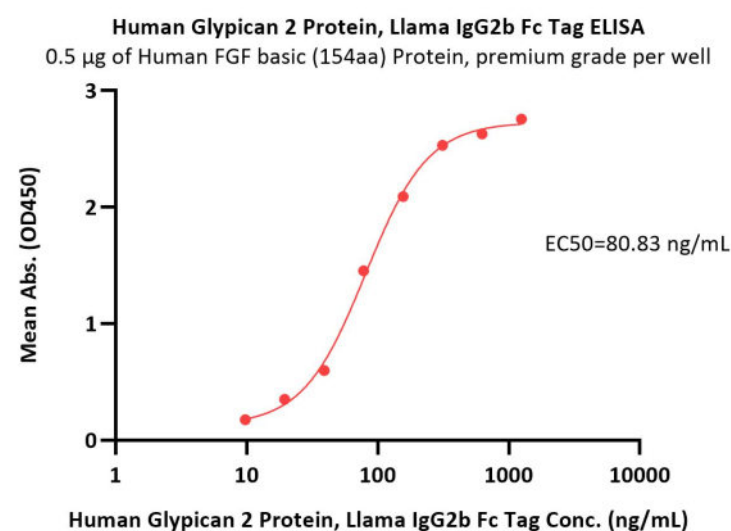
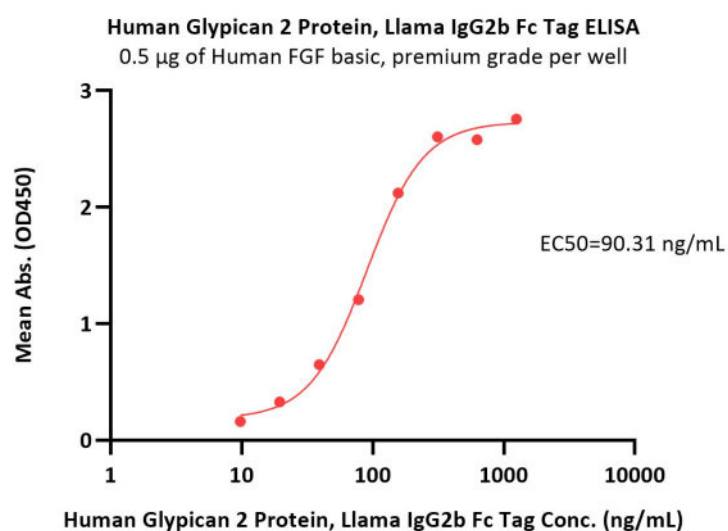


Human Glypican 2 Protein, Llama IgG2b Fc Tag on SDS-PAGE under reducing (R) condition. The gel was stained with Coomassie Blue. The purity of the protein is greater than 90% (With [Star Ribbon Pre-stained Protein Marker](#)).

Bioactivity-ELISA

Discounts, Gifts,
and more!





Immobilized Human FGF basic, premium grade (Cat. No. BFF-H4117) at 5 µg/mL (100 µL/well) can bind Human Glypican 2 Protein, Llama IgG2b Fc Tag (Cat. No. GP2-H5253) with a linear range of 10-156 ng/mL (QC tested).

Immobilized Human FGF basic (154aa) Protein, premium grade (Cat. No. BFF-H5115) at 5 µg/mL (100 µL/well) can bind Human Glypican 2 Protein, Llama IgG2b Fc Tag (Cat. No. GP2-H5253) with a linear range of 10-156 ng/mL (Routinely tested).

Background

Glypican 2 (GPC2), also known cerebroglycan, is a glycoposphatidylinositol-linked integral membrane heparan sulfate proteoglycan found in the developing nervous system. Cerebroglycan participates in cell adhesion and is thought to regulate the growth and guidance of axons. Cerebroglycan has especially high affinity for laminin-1. GPC2 silencing inactivates Wnt/β-catenin signaling and reduces the expression of N-Myc, an oncogenic driver of neuroblastoma tumorigenesis. Immunotoxins and chimeric antigen receptor (CAR) T cells targeting GPC2 inhibit neuroblastoma growth in mouse models. A GPC3 specific antibody drug conjugate (ADC) can also inhibit neuroblastoma cell proliferation.

Clinical and Translational Updates

Please contact us via TechSupport@acrobiosystems.com if you have any question on this product.

Discounts, Gifts,
and more!

