



## Synonym

GPC3,OCI5,Glypican-3,GTR2-2,MXR7,DGSX,SDYS ,SGB,SGBS,SGBS1

## Source

Human Glypican 3 Protein, Fc Tag(GP3-H5258) is expressed from human 293 cells (HEK293). It contains AA Gln 25 - His 559 (Accession # [P51654-1](#)).

Predicted N-terminus: Gln 25 & Ser 359

## Molecular Characterization

Glypican 3(Gln 25 - His 559) P51654-1	Fc(Pro 100 - Lys 330) P01857
--	---------------------------------

This protein carries a human IgG1 Fc tag at the C-terminus.

This protein contains a furin-like convertase cleavage site, 355-RQYR-358, and will be partially processed into N and C-terminal fragment with calculated MW of 38.1 kDa and 49.3 kDa respectively. The protein migrates as 40 kDa, 60 kDa and 100-120 kDa under reducing (R) condition (SDS-PAGE) due to glycosylation.

## Endotoxin

Less than 0.1 EU per µg by the LAL method.

## Purity

>90% as determined by SDS-PAGE.

## Formulation

Lyophilized from 0.22 µm filtered solution in

Tris with Glycine, Arginine and NaCl, pH7.5 with trehalose as protectant.

Contact us for customized product form or formulation.

## Reconstitution

Please see Certificate of Analysis for specific instructions.

*For best performance, we strongly recommend you to follow the reconstitution protocol provided in the CoA.*

## Storage

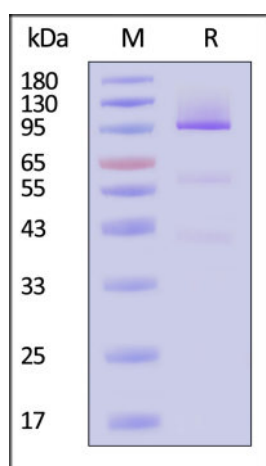
For long term storage, the product should be stored at lyophilized state at -20°C or lower.

*Please avoid repeated freeze-thaw cycles.*

This product is stable after storage at:

- -20°C to -70°C for 12 months in lyophilized state;
- -70°C for 3 months under sterile conditions after reconstitution.

## SDS-PAGE

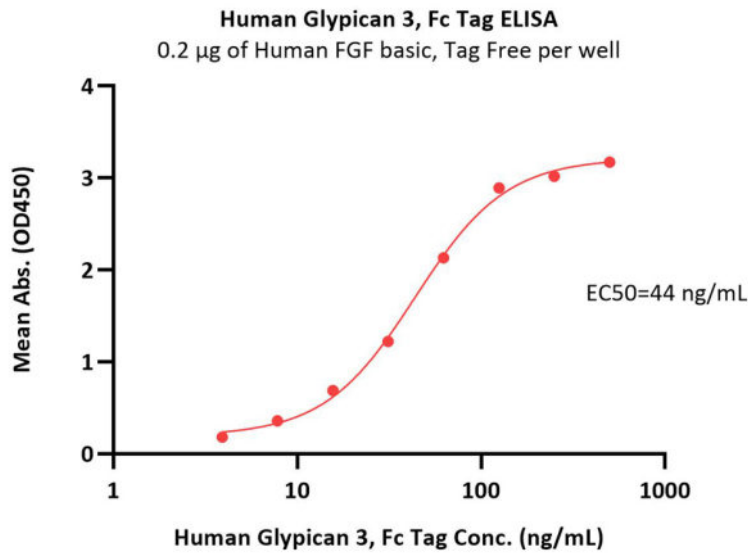


Human Glypican 3 Protein, Fc Tag on SDS-PAGE under reducing (R) condition. The gel was stained with Coomassie Blue. The purity of the protein is greater than 90% (With [Star Ribbon Pre-stained Protein Marker](#)).

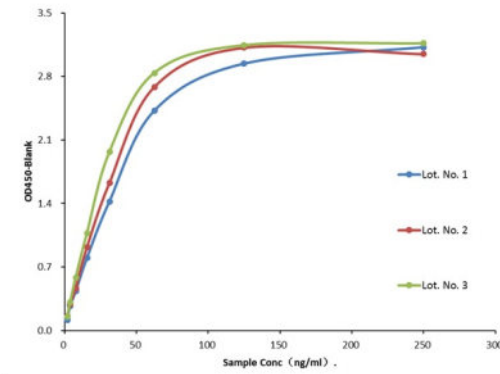
## Bioactivity-ELISA

Discounts, Gifts,  
and more!



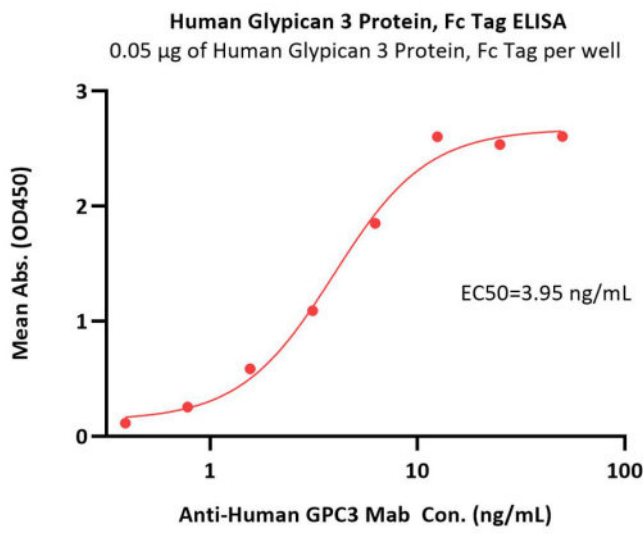


**Batch consistency**



Lot No.	EC50(µg/mL)
Lot No. 1	0.0299
Lot No. 2	0.0351
Lot No. 3	0.0249

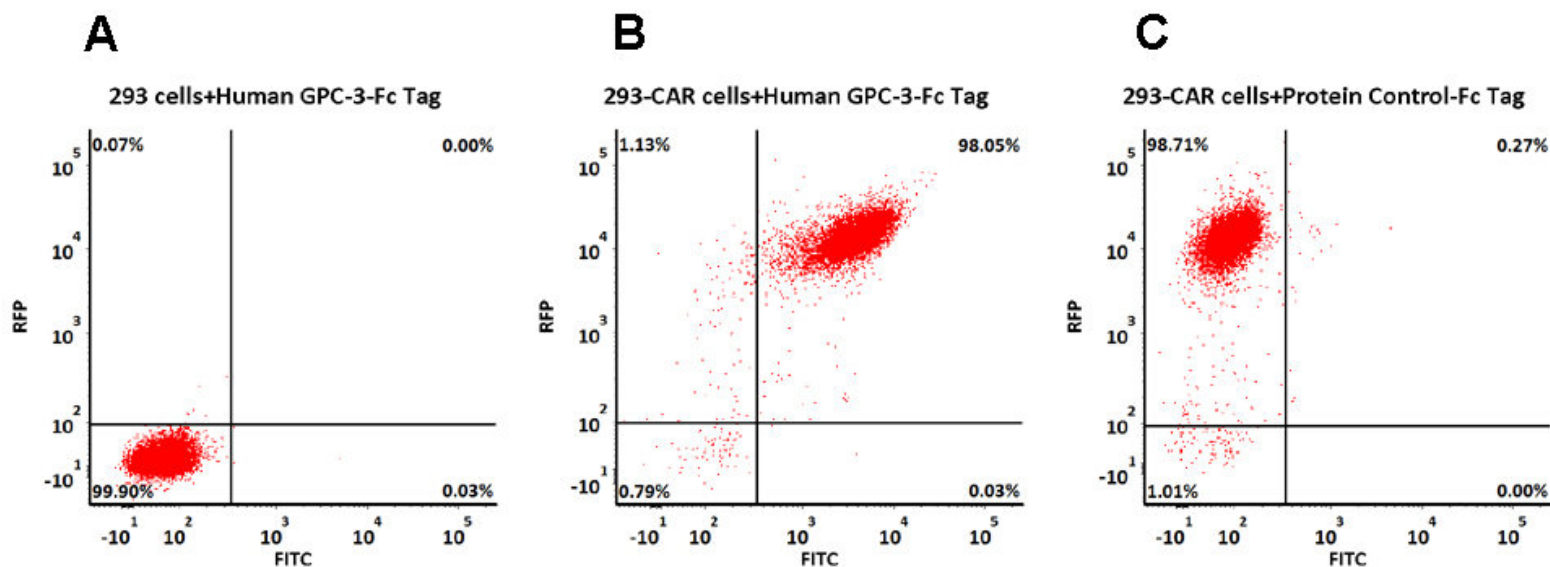
Immobilized Human FGF basic, premium grade (Cat. No. BFF-H4117) at 2 µg/mL (100 µL/well) can bind Human Glypican 3 Protein, Fc Tag (Cat. No. GP3-H5258) with a linear range of 4-63 ng/mL (QC tested).



Immobilized Human Glypican 3 Protein, Fc Tag (Cat. No. GP3-H5258) at 0.5 µg/mL (100 µL/well) can bind Anti-Human GPC3 Mab with a linear range of 0.8-6 ng/mL (Routinely tested).

**Evaluation of CAR expression**

FACS Analysis of Anti-GPC3 CAR Expression



293 cells were transfected with anti-GPC3-scFv and RFP tag. 2e5 of the cells were first stained with B. Human Glypican 3 Protein, Fc Tag (Cat. No. GP3-H5258, 3 µg/ml) and C. human Fc tag protein control, followed by FITC-conjugated anti-human IgG Fc antibody. A. Non-transfected 293 cells and C. human Fc tag protein





control were used as negative control. RFP was used to evaluate CAR (anti-GPC3-scFv) expression and FITC was used to evaluate the binding activity of Human Glypican 3 Protein, Fc Tag (Cat. No. GP3-H5258).

## Background

Glypican-3 (GPC3) is also known as Intestinal protein OCI-5, GTR2-2, MXR7, which belongs to the glypican family. Glypican 3 / GPC-3 is highly expressed in lung, liver and kidney. Glypican-3 inhibits the dipeptidyl peptidase activity of DPP4. Glypican-3 may be involved in the suppression/modulation of growth in the predominantly mesodermal tissues and organs, and also may play a role in the modulation of IGF2 interactions with its receptor and thereby modulate its function.

## Clinical and Translational Updates

Discounts, Gifts,  
and more!

