

**Synonym**

GPRC5D

**Source**

Cynomolgus GPRC5D, Flag,His Tag(GPD-C52D3) is expressed from human 293 cells (HEK293). It contains AA Tyr 2 - Phe 192 & Glu 197 - Leu 262 (Accession # [A0A2K5W6I7-1](#) ).

Predicted N-terminus: Asp

**Molecular Characterization**

This protein carries flag tag at the N-terminus and polyhistidine tag at the C-terminus

The protein has a calculated MW of 51.9 kDa. The protein migrates as 35-40 kDa under reducing (R) condition (SDS-PAGE).

**Endotoxin**

Less than 1.0 EU per µg by the LAL method.

**Purity**

>90% as determined by SDS-PAGE.

**Formulation**

*This product is not suitable for cell based experiments due to cytotoxicity of DDM.*

*DDM and CHS are INDISPENSABLE to keep membrane protein soluble and active, under no circumstance should you remove DDM and CHS.*

*DDM/CHS buffer (DC-11) is sold separately and not included in protein, and please contact us if you need the buffer.*

*If glycerol is not compatible to your application, remove glycerol just before immediate experiment, and NEVER store glycerol-free protein solution.*

Supplied as 0.2 µm filtered solution in 50 mM HEPES, 150 mM NaCl, DDM, CHS, pH7.5 with glycerol as protectant.

Contact us for customized product form or formulation.

**Shipping**

*This product is supplied and shipped as sterile liquid solution with dry ice, please inquire the shipping cost.*

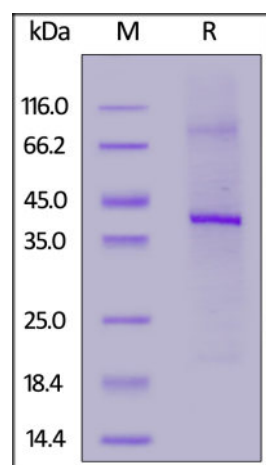
**Storage**

*Please avoid repeated freeze-thaw cycles.*

This product is stable after storage at:

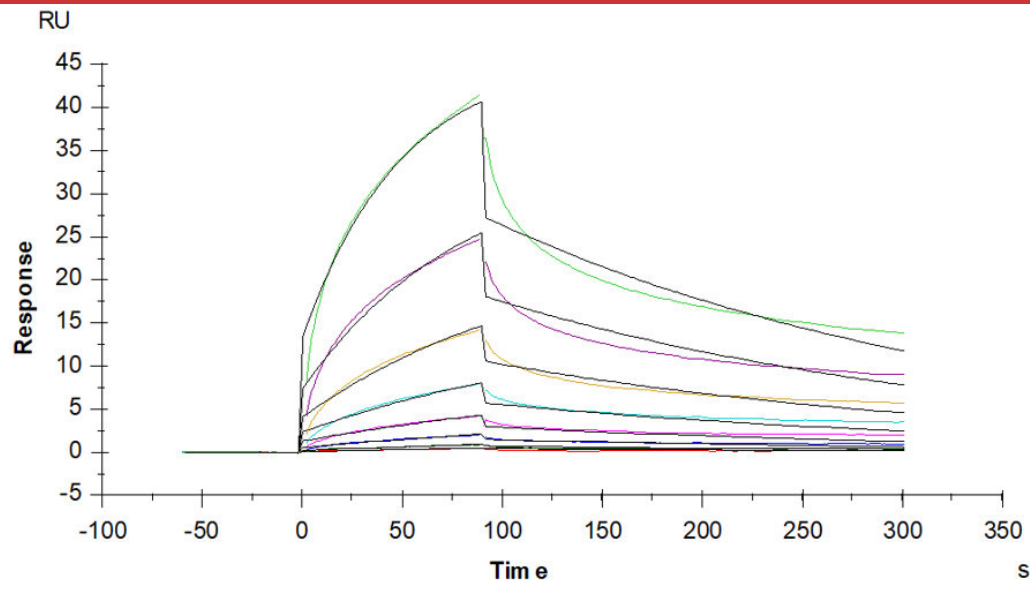
- The product MUST be stored at -70°C or lower upon receipt;
- -70°C for 3 months under sterile conditions.

\*\*The DDM/CHS buffer (Cat. No. [DC-11](#)) is sold separately and not included in protein, you can follow [this link](#) for product information.

**SDS-PAGE**

Cynomolgus GPRC5D, Flag,His Tag on SDS-PAGE under reducing (R) condition. The gel was stained with Coomassie Blue. The purity of the protein is greater than 90%.

**Bioactivity-SPR**



Anti-GPRC5D Antibody immobilized on CM5 Chip can bind Cynomolgus GPRC5D, Flag,His Tag (Cat. No. GPD-C52D3) with an affinity constant of 0.122  $\mu$ M as determined in a SPR assay (Biacore T200) (QC tested).

### Background

The protein encoded by this gene is a member of the G protein-coupled receptor family; however, the specific function of this gene has not yet been determined.

### Clinical and Translational Updates

Please contact us via [TechSupport@acrobiosystems.com](mailto:TechSupport@acrobiosystems.com) if you have any question on this product.