

Mouse GPRC5D Protein, Flag,His Tag (Detergent)

Catalog # GPD-M52D3



BIOSYSTEMS
Acro
Surprise Inside!

Synonym

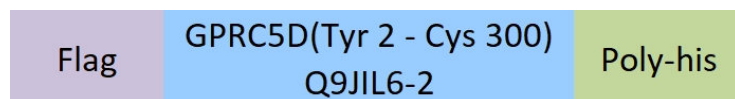
GPRC5D

Source

Mouse GPRC5D Protein, Flag,His Tag (Detergent)(GPD-M52D3) is expressed from human 293 cells (HEK293). It contains AA Tyr 2 - Cys 300 (Accession # [Q9JIL6-2](#)).

Predicted N-terminus: Asp

Molecular Characterization



This protein carries flag tag at the N-terminus and polyhistidine tag at the C-terminus.

The protein has a calculated MW of 38.3 kDa. The protein migrates as 33-65 kDa when calibrated against [Star Ribbon Pre-stained Protein Marker](#) under reducing (R) condition (SDS-PAGE) due to glycosylation.

Endotoxin

Less than 1.0 EU per µg by the LAL method.

**The DDM/CHS buffer (Cat. No. [DC-11](#)) is sold separately and not included in protein, you can follow [this link](#) for product information.

Purity

>80% as determined by SDS-PAGE.

Formulation

This product is not suitable for cell based experiments due to cytotoxicity of DDM.

DDM and CHS are INDISPENSABLE to keep membrane protein soluble and active, under no circumstance should you remove DDM and CHS.

DDM/CHS buffer (DC-11) is sold separately and not included in protein, and please contact us if you need the buffer.

If glycerol is not compatible to your application, remove glycerol just before immediate experiment, and NEVER store glycerol-free protein solution.

Supplied as 0.2 µm filtered solution in 50 mM HEPES, 150 mM NaCl, DDM, CHS, pH7.5 with glycerol as protectant.

Contact us for customized product form or formulation.

Shipping

This product is supplied and shipped with dry ice, please inquire the shipping cost.

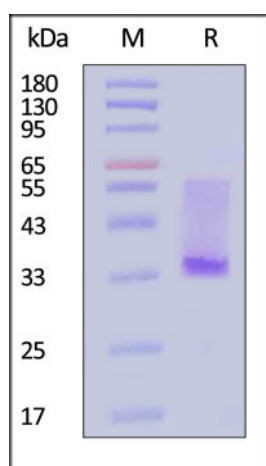
Storage

Please avoid repeated freeze-thaw cycles.

This product is stable after storage at:

- The product MUST be stored at -70°C or lower upon receipt;
- -70°C for 3 months under sterile conditions.

SDS-PAGE



Mouse GPRC5D Protein, Flag,His Tag (Detergent) on SDS-PAGE under reducing (R) condition. The gel was stained with Coomassie Blue. The purity of the protein is greater than 80% (With [Star Ribbon Pre-stained Protein Marker](#)).

Discounts, Gifts,
and more!



➤ www.acrobiosystems.com

4/16/2024

Mouse GPRC5D Protein, Flag,His Tag (Detergent)

Catalog # GPD-M52D3



Background

G-protein coupled receptor family C group 5 member D (GPRC5D) is a retinoic acid-inducible 40 kDa protein with seven transmembrane segments and a short N terminal extracellular region. Widely expressed in the peripheral system. Expression pattern is high in pancreas, medium in kidney, small intestine, spleen and testis, low in lung, colon, leukocyte, prostate and thymus and not detectable in brain, heart, liver, placenta, skeletal muscle and ovary.

Clinical and Translational Updates

Discounts, Gifts,
and more!

