

Mouse GPRC5D Full Length Protein (VLP)

Catalog # GPD-M52P3



Synonym

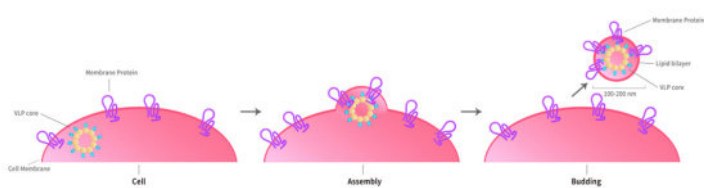
GPRC5D

Source

Mouse GPRC5D Full Length Protein (VLP)(GPD-M52P3) is expressed from human 293 cells (HEK293).

Molecular Characterization

Virus-like particles(VLPs) are formed by self-assembly of envelop/capsid proteins from viruses. Membrane Proteins can be constituted in-situ with VLPs produced from HEK293 cell cultures. These VLPs concentrate conformationally intact membrane proteins directly on the cell surface and produce soluble, high-concentration proteins perfect for immunization and antibody screening.



The VLPs provide the display of properly folded membrane proteins in their native cellular membrane in a compact size of 100~300 nm diameter (similar to the size of most viruses) making it optimal targets for dendritic cells in vivo and surface attachment for phage display.

*The isotype control of empty/mock VLP (Cat. No. [VLP-N5213](#)) is sold separately and not included in protein, you can follow [this link](#) for product information.

Formulation

The VLPs are highly immunogenic, so the immunization strategy should be optimized (antigen dose, regimen and adjuvant).

Supplied as 0.2 μm filtered solution in PBS, Arginine, pH7.4 with trehalose as protectant.

Contact us for customized product form or formulation.

Shipping

This product is supplied and shipped with dry ice, please inquire the shipping cost.

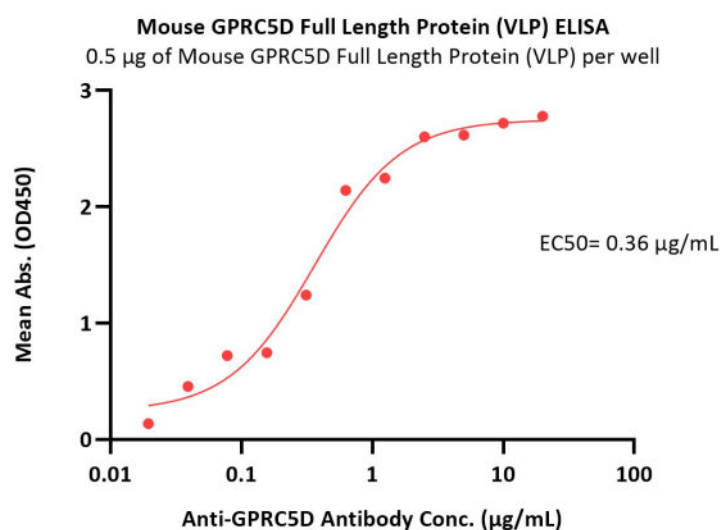
Storage

Please avoid repeated freeze-thaw cycles.

This product is stable after storage at:

- The product MUST be stored at -70°C or lower upon receipt;
- -70°C for 12 months under sterile conditions.

Bioactivity-ELISA



Immobilized Mouse GPRC5D Full Length Protein (VLP) (Cat. No. GPD-M52P3) at 5 $\mu\text{g/mL}$ (100 $\mu\text{L/well}$) can bind Anti-GPRC5D Antibody with a linear range of 0.02-0.625 $\mu\text{g/mL}$ (QC tested).

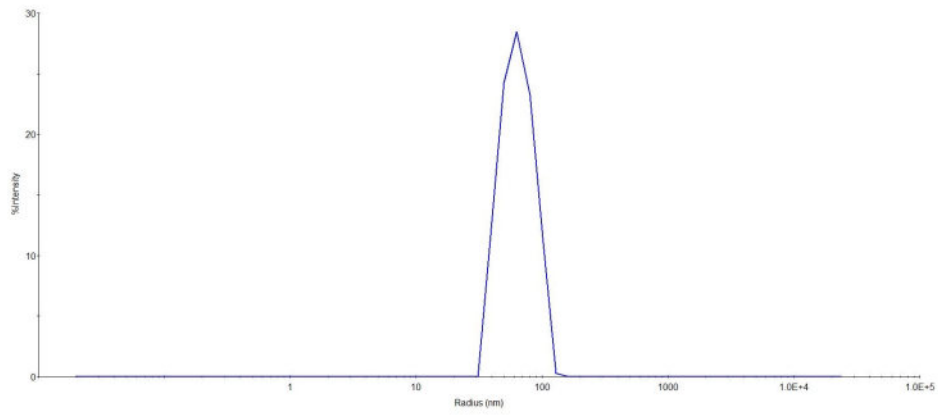
Identity-DLS

Discounts, Gifts,
and more!



Mouse GPRC5D Full Length Protein (VLP)

Catalog # GPD-M52P3



The mean peak Radius of VLP is 50-75 nm with more than 95% intensity as determined by dynamic light scattering (DLS).

Background

The protein encoded by this gene is a member of the G protein-coupled receptor family; however, the specific function of this gene has not yet been determined. (provided by RefSeq, Jul 2008)

Clinical and Translational Updates

Discounts, Gifts,
and more!

