



**Source**

Monoclonal Anti-HA (A/Wisconsin/588/2019 (H1N1)) Antibody, Human IgG1 (6D1) is a chimeric monoclonal antibody recombinantly expressed from HEK293, which combines the variable region of a mouse monoclonal antibody with Human constant domain.

**Clone**

6D1

**Isotype**

Human IgG1 | Human Kappa

**Conjugate**

Unconjugated

**Antibody Type**

Recombinant Monoclonal

**Reactivity**

Virus

**Immunogen**

Recombinant Influenza A [A/Wisconsin/588/2019 (H1N1)] HA derived from human 293 cells.

**Specificity**

This product is a specific antibody specifically reacts with Hemagglutinin (HA).

**Application**

| Application | Recommended Usage |
|-------------|-------------------|
| ELISA       | 0.1-50 ng/mL      |

**Cross Verification**

This product can cross in Elisa with

Influenza A [Victoria/4897/2022] Hemagglutinin (HA) Protein, His Tag (Cat. No. HA1-V52H8).

Influenza A [Wisconsin/67/2022] Hemagglutinin (HA) Protein, His Tag (Cat. No. HA1-V52H7).

Influenza A [A/Victoria/2570/2019] Hemagglutinin (HA) Protein, His Tag (Cat. No. HA1-V52H6).

Influenza A [Sydney/5/2021 (H1N1)] HA Protein, His Tag (Cat. No. HA1-V52H14).

No cross-reactivity in ELISA with

Influenza A [A/Darwin/6/2021 (H3N2)] HA Protein, His Tag (Cat. No. HA2-V52H5).

Influenza A [A/Darwin/9/2021 (H3N2)] HA Protein, His Tag (Cat. No. HA2-V52H6).

Influenza A [A/Bangkok/1/1979 (H3N2)] HA, His Tag (Cat. No. HA2-V52H3).

Influenza A [A/Hong Kong/483/97 (H5N1)] HA, His Tag (Cat. No. HA1-V5229).

Influenza A (Guangdong/18SF020(H5N6)) Hemagglutinin (HA) Protein, His Tag (Cat. No. HA6-V52H3).

**Purity**

>90% as determined by SDS-PAGE.

>90% as determined by SEC-MALS.

**Purification**

Protein A purified/ Protein G purified

**Formulation**

Lyophilized from 0.22 µm filtered solution in PBS, pH7.4 with trehalose as protectant.

Contact us for customized product form or formulation.

**Reconstitution**

Please see Certificate of Analysis for specific instructions.

*For best performance, we strongly recommend you to follow the reconstitution protocol provided in the CoA.*

**Storage**

For long term storage, the product should be stored at lyophilized state at -20°C or lower.

*Please avoid repeated freeze-thaw cycles.*

This product is stable after storage at:

- -20°C to -70°C for 12 months in lyophilized state;
- -70°C for 3 months under sterile conditions after reconstitution.

Discounts, Gifts,  
and more!





Influenza A (turkey/Germany-MV/R2472/2014(H5N8)) HA Protein, His Tag (Cat. No. HA8-V52H3).

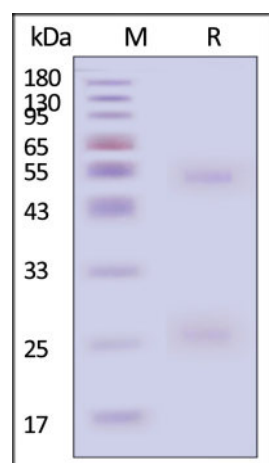
Influenza A (A/Shanghai/02/2013(H7N9)) Hemagglutinin (HA) Protein, His Tag (Cat. No. HA9-V52H3).

Influenza B [Austria/1359417/2021 (B/Victoria lineage)] Hemagglutinin (HA) Protein, His Tag (Cat. No. HAE-V52H3).

Influenza B [Phuket/3073/2013 (B/Yamagata lineage)] HA Protein, His Tag (Cat. No. HAE-V52H4).

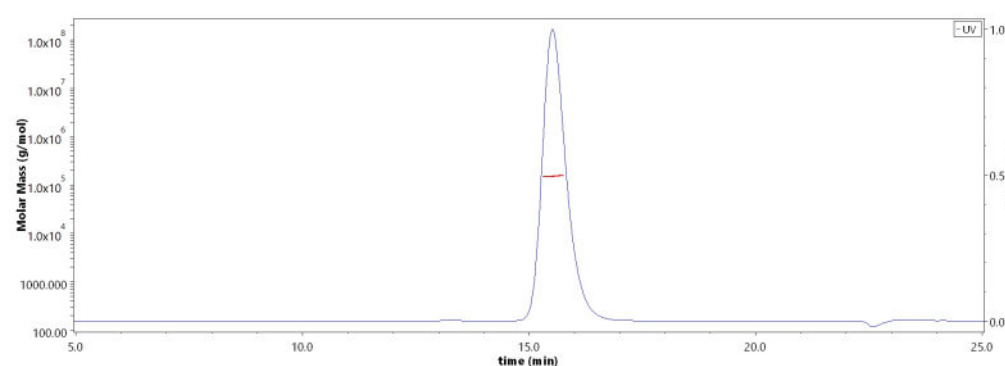
Influenza A (Vietnam/1194/2004(H5N1)) Hemagglutinin (HA) Protein, His Tag (Cat. No. HA1-V52H9).

## SDS-PAGE



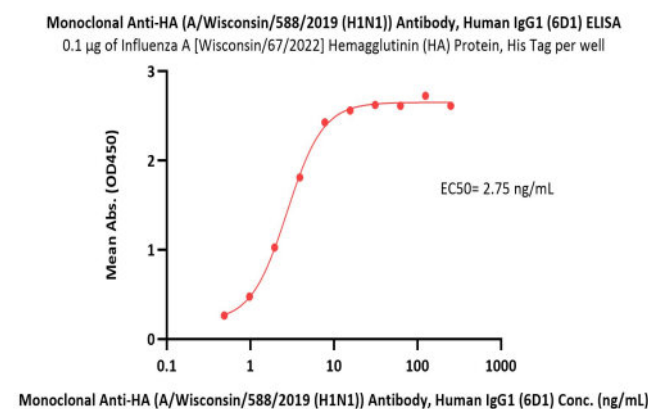
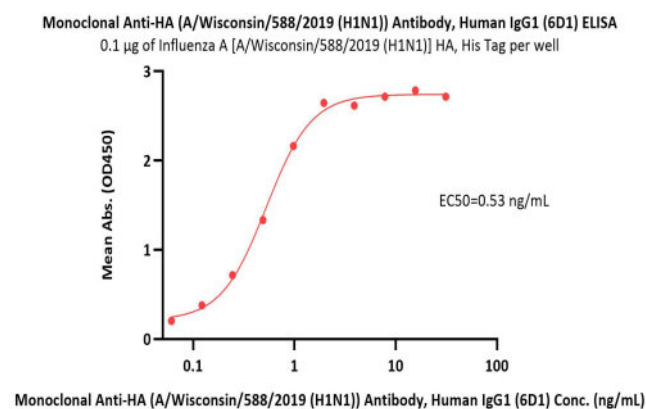
Monoclonal Anti-HA (A/Wisconsin/588/2019 (H1N1)) Antibody, Human IgG1 (6D1) on SDS-PAGE under reducing (R) condition. The gel was stained with Coomassie Blue. The purity of the protein is greater than 90% (With [Star Ribbon Pre-stained Protein Marker](#)).

## SEC-MALS



The purity of Monoclonal Anti-HA (A/Wisconsin/588/2019 (H1N1)) Antibody, Human IgG1 (6D1) (Cat. No. HA1-M648) is more than 90% and the molecular weight of this protein is around 135-165 kDa verified by SEC-MALS. [Report](#)

## Bioactivity-ELISA



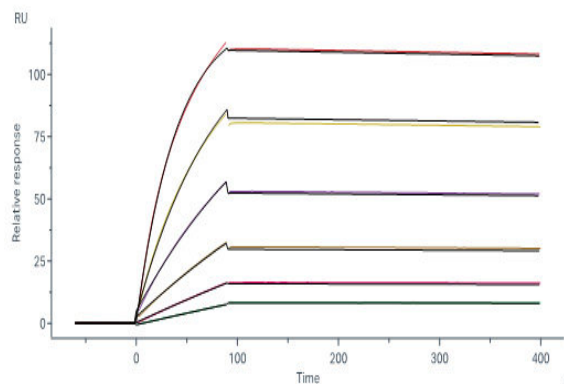
Immobilized Influenza A [A/Wisconsin/588/2019 (H1N1)] HA, His Tag (Cat. No. HA1-V52H3) at 1 µg/mL (100 µL/well) can bind Monoclonal Anti-HA (A/Wisconsin/588/2019 (H1N1)) Antibody, Human IgG1 (6D1) (Cat. No. HA1-M648) with a linear range of 0.1-1 ng/mL (QC tested).

Immobilized Influenza A [Wisconsin/67/2022] Hemagglutinin (HA) Protein, His Tag (Cat. No. HA1-V52H7) at 1 µg/mL (100 µL/well) can bind Monoclonal Anti-HA (A/Wisconsin/588/2019 (H1N1)) Antibody, Human IgG1 (6D1) (Cat. No. HA1-M648) with a linear range of 0.5-8 ng/mL (Routinely tested).

## Bioactivity-SPR

Discounts, Gifts,  
and more!





Monoclonal Anti-HA (A/Wisconsin/588/2019 (H1N1)) Antibody, Human IgG1 (6D1) (Cat. No. HA1-M648) captured on Protein A Chip can bind Influenza A [A/Wisconsin/588/2019 (H1N1)] HA, His Tag (Cat. No. HA1-V52H3) with an affinity constant of 0.169 nM as determined in a SPR assay (Biacore 8K) (Routinely tested).

### Background

Influenza, commonly known as 'the flu', is an infectious disease of birds and mammals caused by RNA viruses of the family Orthomyxoviridae, the influenza viruses. The virus is divided into three main types (Influenzavirus A, Influenzavirus B, and Influenzavirus C), which are distinguished by differences in two major internal proteins (hemagglutinin (HA) and neuraminidase (NA)), which are the most important targets for the immune system. Hemagglutinin binds to the sialic acid-containing receptors on the surface of host cells during initial infection and at the end of an infectious cycle which makes it a great target for vaccine studies.

### Clinical and Translational Updates

Discounts, Gifts,  
and more!

