



Background

Required to maintain individual mitotic chromosomes dispersed in the cytoplasm following nuclear envelope disassembly. Associates with the surface of the mitotic chromosome, the perichromosomal layer, and covers a substantial fraction of the chromosome surface. Prevents chromosomes from collapsing into a single chromatin mass by forming a steric and electrostatic charge barrier: the protein has a high net electrical charge and acts as a surfactant, dispersing chromosomes and enabling independent chromosome motility.

Host Species

Rabbit

Clone

7A4

Application

IHC

Property

1: 500

State

Liquid

Positive Control

Human Tonsil Tissues

Clonality

Monoclonal

Synonym

PPP1R105, MIB-1, ki-67

Research Field

Cancer Drug Targets

Source

Rabbit

Isotype

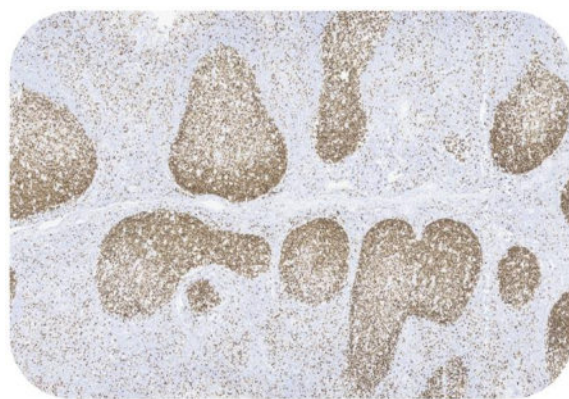
IgG

Storage

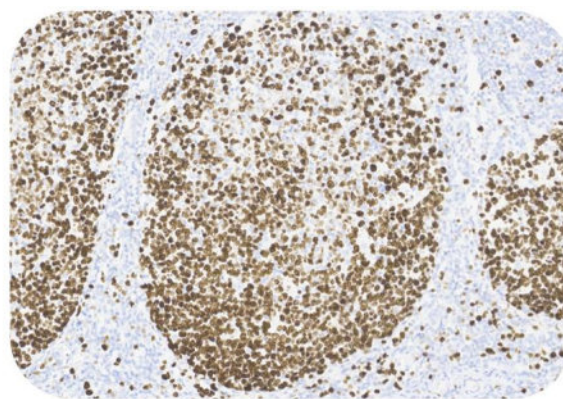
Shipped at 4°C. Store at +4°C short term (1-2 weeks). Upon delivery aliquot. Store at -20°C long term. Avoid freeze / thaw cycle.

Typical Data

Control Sample



Immunohistochemistry (Formalin/PFA-fixed paraffin-embedded sections) -Recombinant Monoclonal Anti-Ki-67 Antibody, Rabbit (7A4) (HGS-S239)
Human Tonsil Tissue, 4X



Immunohistochemistry (Formalin/PFA-fixed paraffin-embedded sections) -Recombinant Monoclonal Anti-Ki-67 Antibody, Rabbit (7A4) (HGS-S239)
Human Tonsil Tissue, 20X

Immunohistochemical analysis of paraffin embedded Human tonsil tissue labelled with HGS-S239 at 1/500 dilution. Perform heat mediated antigen retrieval with Tris/EDTA buffer pH 9.0 before commencing with IHC staining protocol.

Cancer Sample

Discounts, Gifts,
and more!

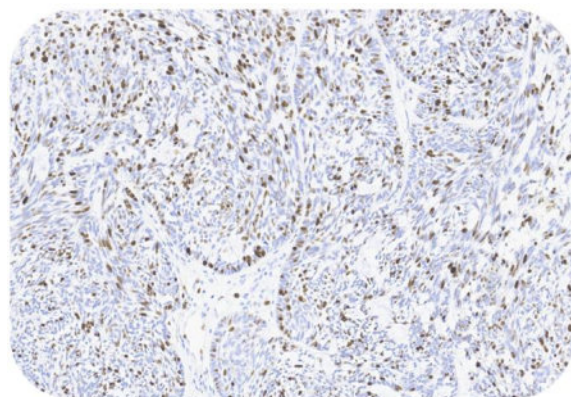


Recombinant Monoclonal Anti-Ki-67 Antibody, Rabbit (7A4)

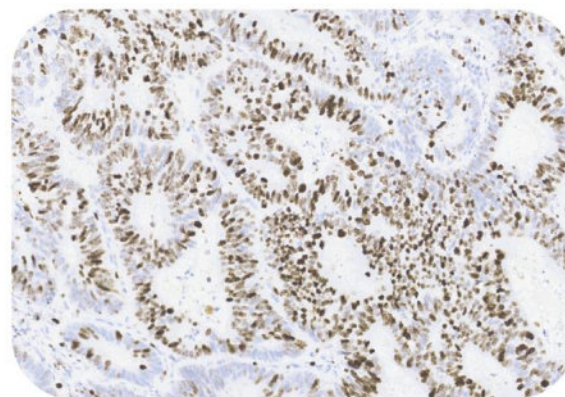
Catalog # HGS-S239



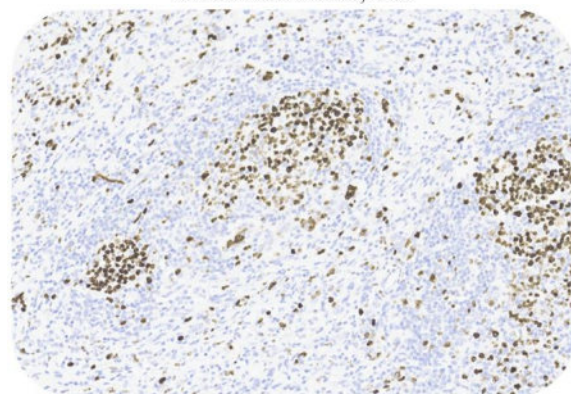
BIOSYSTEMS
Acro



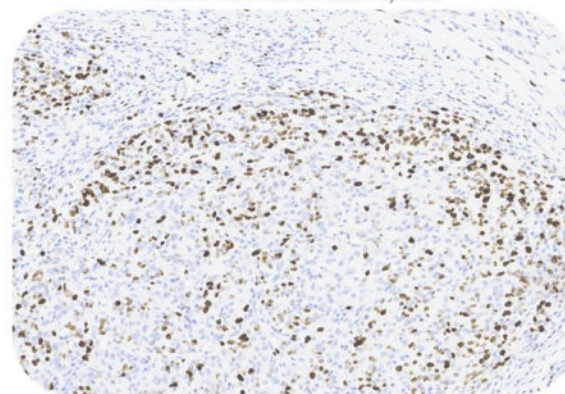
Immunohistochemistry (Formalin/PFA-fixed paraffin-embedded sections) -Recombinant Monoclonal Anti-Ki-67 Antibody, Rabbit (7A4) (HGS-S239)
Human Skin Cancer, 20X



Immunohistochemistry (Formalin/PFA-fixed paraffin-embedded sections) -Recombinant Monoclonal Anti-Ki-67 Antibody, Rabbit (7A4) (HGS-S239)
Human Colorectal Cancer, 20X



Immunohistochemistry (Formalin/PFA-fixed paraffin-embedded sections) -Recombinant Monoclonal Anti-Ki-67 Antibody, Rabbit (7A4) (HGS-S239)
Human Gastric Cancer, 20X



Immunohistochemistry (Formalin/PFA-fixed paraffin-embedded sections) -Recombinant Monoclonal Anti-Ki-67 Antibody, Rabbit (7A4) (HGS-S239)
Human Gastric Cancer, 20X

Immunohistochemical analysis of paraffin embedded human cancer tissue labelled with HGS-S239 at 1/500 dilution.
Perform heat mediated antigen retrieval with Tris/EDTA buffer pH 9.0 before commencing with IHC staining protocol.

Clinical and Translational Updates

Please contact us via TechSupport@acrobiosystems.com if you have any question on this product.

Discounts, Gifts,
and more!



» www.acrobiosystems.com

10/27/2023