

# Biotinylated Human HLA-A\*02:01&B2M&NY-ESO-1 (SLLMWITQC) Complex Protein (Monomer, MALS verified)

Catalog # HL1-H82E6



BIOSYSTEMS  
**Acro**

## Synonym

HLA-A\*02:01 & B2M & NY-ESO-1

## Source

Biotinylated Human HLA-A\*02:01&B2M&NY-ESO-1 (SLLMWITQC) Complex Protein(HL1-H82E6) is expressed from human 293 cells (HEK293). It contains AA Gly 25 - Ile 308 (HLA-A\*02:01) & Ile 21 - Met 119 (B2M) & SLLMWITQC peptide (Accession # [AAA59606.1](#) (HLA-A\*02:01) & [P61769](#) (B2M) & SLLMWITQC).

Predicted N-terminus: Gly 25 & Ser

## Molecular Characterization

Biotinylated Human HLA-A\*02:01&B2M&NY-ESO-1 (SLLMWITQC) Complex Protein is produced by co-expression of HLA and B2M loaded with NY-ESO-1 peptide.

This protein carries a polyhistidine tag at the C-terminus, followed by an Avi tag (Avitag™).

The protein has a calculated MW of 36.3 kDa and 13.8 kDa. The protein migrates as 40-43 kDa and 13 kDa when calibrated against [Star Ribbon Pre-stained Protein Marker](#) under reducing (R) condition (SDS-PAGE) due to glycosylation.

## Labeling

*Biotinylation of this product is performed using Avitag™ technology. Briefly, the single lysine residue in the Avitag is enzymatically labeled with biotin.*

## Protein Ratio

Passed as determined by the HABA assay / binding ELISA.

## Endotoxin

Less than 1.0 EU per µg by the LAL method.

## Purity

>95% as determined by SDS-PAGE.

>90% as determined by SEC-MALS.

## Formulation

Lyophilized from 0.22 µm filtered solution in PBS, pH7.4 with trehalose as protectant.

Contact us for customized product form or formulation.

## Reconstitution

Please see Certificate of Analysis for specific instructions.

*For best performance, we strongly recommend you to follow the reconstitution protocol provided in the CoA.*

## Storage

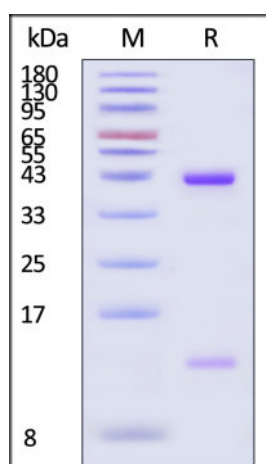
For long term storage, the product should be stored at lyophilized state at -20°C or lower.

*Please avoid repeated freeze-thaw cycles.*

This product is stable after storage at:

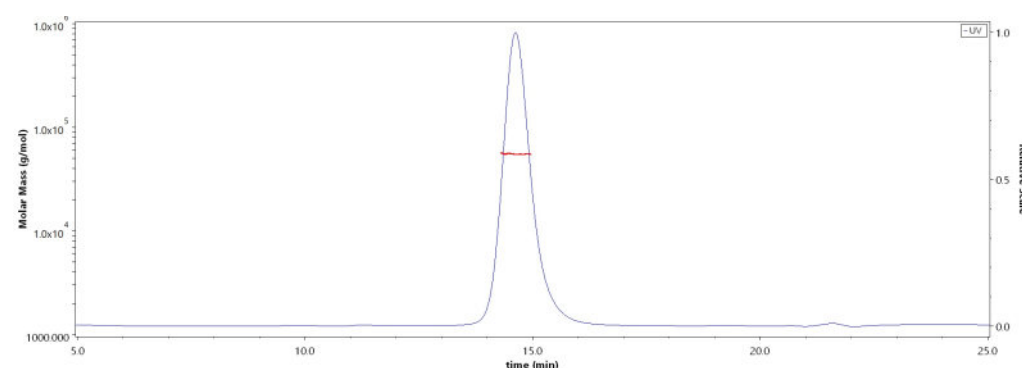
- -20°C to -70°C for 12 months in lyophilized state;
- -70°C for 3 months under sterile conditions after reconstitution.

## SDS-PAGE



Biotinylated Human HLA-A\*02:01&B2M&NY-ESO-1 (SLLMWITQC) Complex Protein on SDS-PAGE under reducing (R) condition. The gel was

## SEC-MALS



The purity of Biotinylated Human HLA-A\*02:01&B2M&NY-ESO-1 (SLLMWITQC) Complex Protein (Cat. No. HL1-H82E6) is more than 90%

Discounts, Gifts,  
and more!



# Biotinylated Human HLA-A\*02:01&B2M&NY-ESO-1 (SLLMWITQC) Complex Protein (Monomer, MALS verified)



Catalog # HL1-H82E6

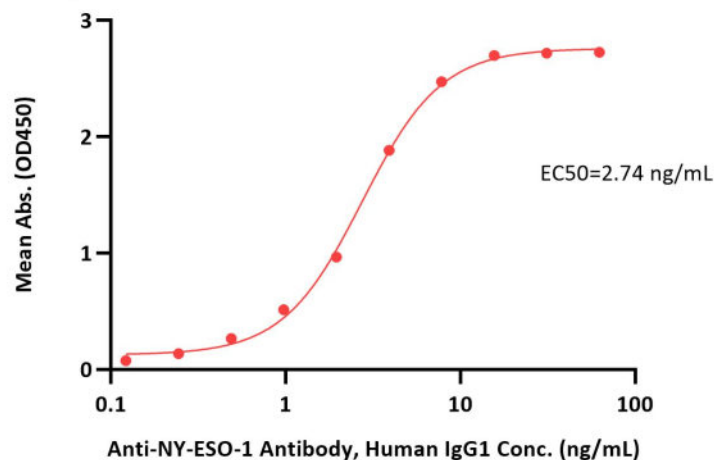
stained with Coomassie Blue. The purity of the protein is greater than 95% (With [Star Ribbon Pre-stained Protein Marker](#)).

and the molecular weight of this protein is around 45-65 kDa verified by SEC-MALS.

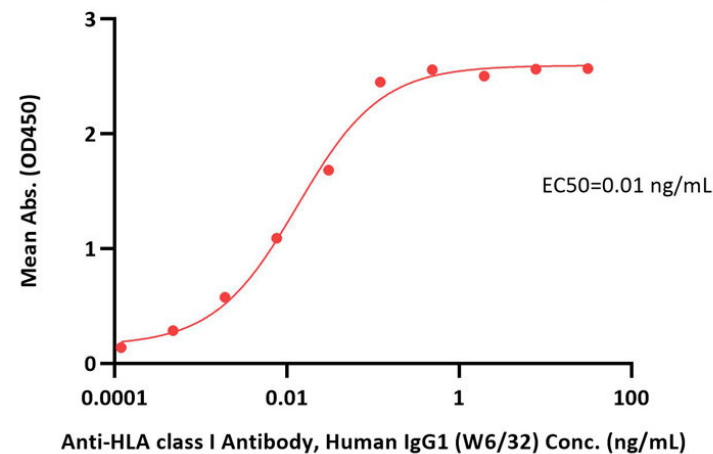
[Report](#)

## Bioactivity-ELISA

**Biotinylated Human HLA-A\*02:01 NY-ESO-1 (SLLMWITQC) Complex Protein ELISA**  
0.1 µg of Biotinylated Human HLA-A\*02:01 NY-ESO-1 (SLLMWITQC) Complex Protein per well



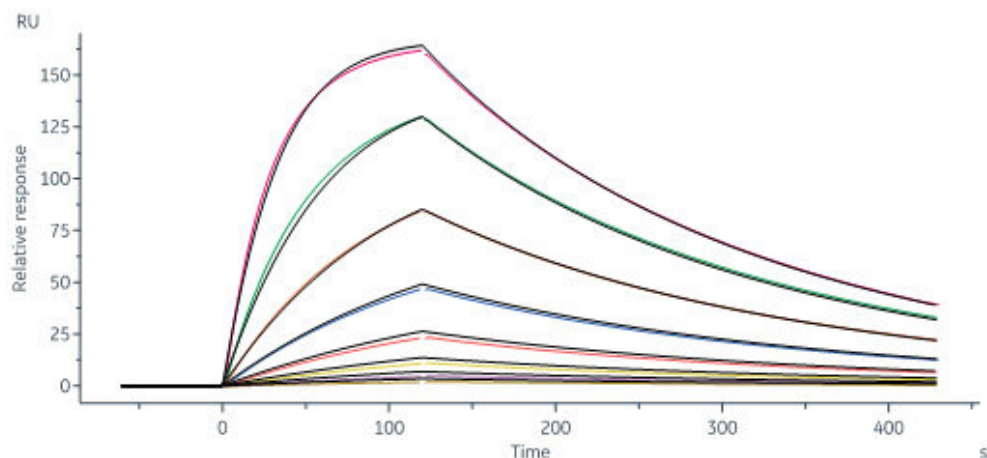
**Biotinylated Human HLA-A\*02:01&B2M&NY-ESO-1 (SLLMWITQC) Complex Protein ELISA**  
0.1 µg of Biotinylated Human HLA-A\*02:01&B2M&NY-ESO-1 (SLLMWITQC) Complex Protein per well



Immobilized Biotinylated Human HLA-A\*02:01&B2M&NY-ESO-1 (SLLMWITQC) Complex Protein (Cat. No. HL1-H82E6) at 1 µg/mL (100 µL/well) on streptavidin (Cat. No. STN-N5116) precoated (0.5 µg/well) plate can bind Anti-NY-ESO-1 Antibody, Human IgG1 with a linear range of 0.1-8 ng/mL (QC tested).

Immobilized Biotinylated Human HLA-A\*02:01&B2M&NY-ESO-1 (SLLMWITQC) Complex Protein (Cat. No. HL1-H82E6) at 1 µg/mL (100 µL/well) on streptavidin (Cat. No. STN-N5116) precoated (0.5 µg/well) plate can bind Anti-HLA class I Antibody, Human IgG1 (W6/32) with a linear range of 0.0001-0.12 ng/mL (Routinely tested).

## Bioactivity-SPR



Anti-NY-ESO-1 antibody captured on CM5 chip via Anti-human IgG Fc antibodies surface can bind Biotinylated Human HLA-A\*02:01&B2M&NY-ESO-1 (SLLMWITQC) Complex Protein (Cat. No. HL1-H82E6) with an affinity constant of 16.9 nM as determined in a SPR assay (Biacore 8K) (QC tested).

## Background

NY-ESO-1, which is also well-known as New York esophageal squamous cell carcinoma 1, is an efficient target for cancer immunotherapy. This antigen is a member of cancer-testis antigens (CTAs) and is highly expressed in various cancers, including melanoma, ovarian, cervical cancer, etc. Adoptive T cell therapy with HLA-A2 restricted NY-ESO-1 transduced CD8<sup>+</sup> T cells has improved the clinical response rates and overall survival of treatment-refractory melanoma patients. The Human HLA-A\*0201 NY-ESO-1 (SLLMWITQC) complex protein is a complex of HLA-A\*0201 of the MHC Class I, B2M and SLLMWITQC peptide of the NY-ESO-1.

Discounts, Gifts,  
and more!



**Biotinylated Human HLA-A\*02:01&B2M&NY-ESO-1 (SLLMWITQC) Complex Protein (Monomer, MALS verified)**

Catalog # HL1-H82E6



**Clinical and Translational Updates**

**Discounts, Gifts,  
and more!**



**>> [www.acrobiosystems.com](http://www.acrobiosystems.com)**