



### Synonym

HLA-A\*2402 & B2M

### Source

Unconjugated Human HLA-A\*24:02&B2M Monomer Protein(HLM-H52E4) is expressed from human 293 cells (HEK293). It contains AA Gly 25 - Thr 305 (HLA-A\*24:02) & Ile 21 - Met 119 (B2M) (Accession # [AAA59600.1](#) (HLA-A\*24:02) & [P61769](#) (B2M)).

Predicted N-terminus: Gly 25 & Ile 21

### Molecular Characterization

This protein carries a polyhistidine tag at the C-terminus, followed by an Avi tag (Avitag™).

The protein has a calculated MW of 35.8 kDa and 11.7 kDa. The protein migrates as 37-40 kDa and 10 kDa when calibrated against [Star Ribbon Pre-stained Protein Marker](#) under reducing (R) condition (SDS-PAGE) due to glycosylation.

### Endotoxin

Less than 1.0 EU per µg by the LAL method.

### Purity

>95% as determined by SDS-PAGE.

>90% as determined by SEC-MALS.

### Formulation

Lyophilized from 0.22 µm filtered solution in PBS, pH7.4 with trehalose as protectant.

Contact us for customized product form or formulation.

### Reconstitution

Please see Certificate of Analysis for specific instructions.

*For best performance, we strongly recommend you to follow the reconstitution protocol provided in the CoA.*

### Storage

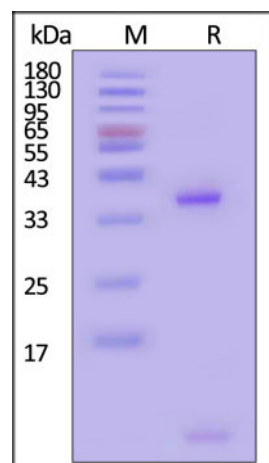
For long term storage, the product should be stored at lyophilized state at -20°C or lower.

*Please avoid repeated freeze-thaw cycles.*

This product is stable after storage at:

- -20°C to -70°C for 12 months in lyophilized state;
- -70°C for 3 months under sterile conditions after reconstitution.

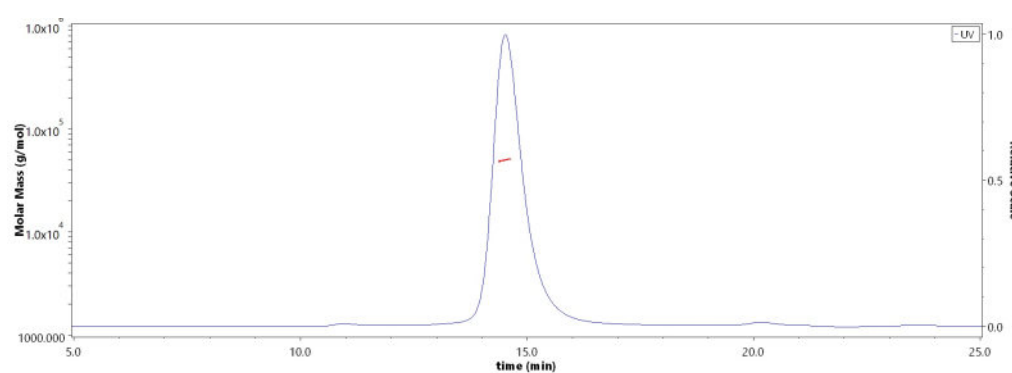
### SDS-PAGE



Unconjugated Human HLA-A\*24:02&B2M Monomer Protein on SDS-PAGE under reducing (R) condition. The gel was stained with Coomassie Blue. The purity of the protein is greater than 95% (With [Star Ribbon Pre-stained Protein Marker](#)).

### Bioactivity-ELISA

### SEC-MALS



The purity of Unconjugated Human HLA-A\*24:02&B2M Monomer Protein (Cat. No. HLM-H52E4) is more than 90% and the molecular weight of this protein is around 45-60 kDa verified by SEC-MALS.

[Report](#)

Discounts, Gifts,  
and more!

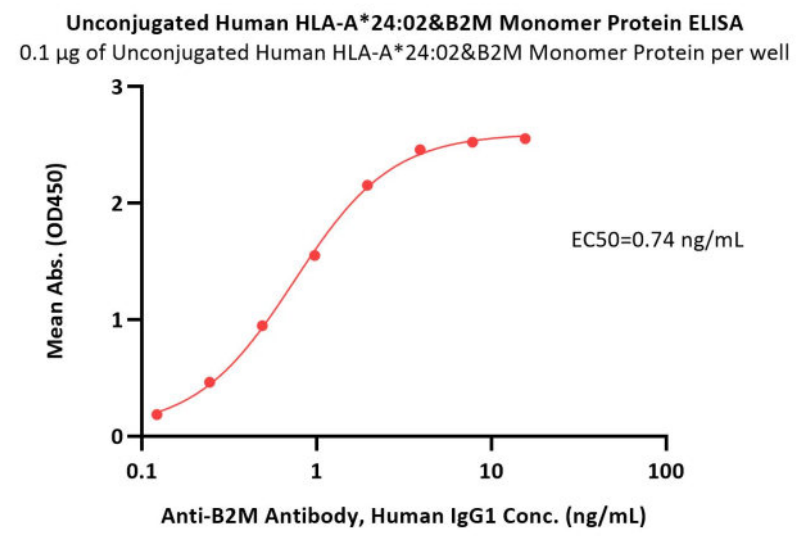
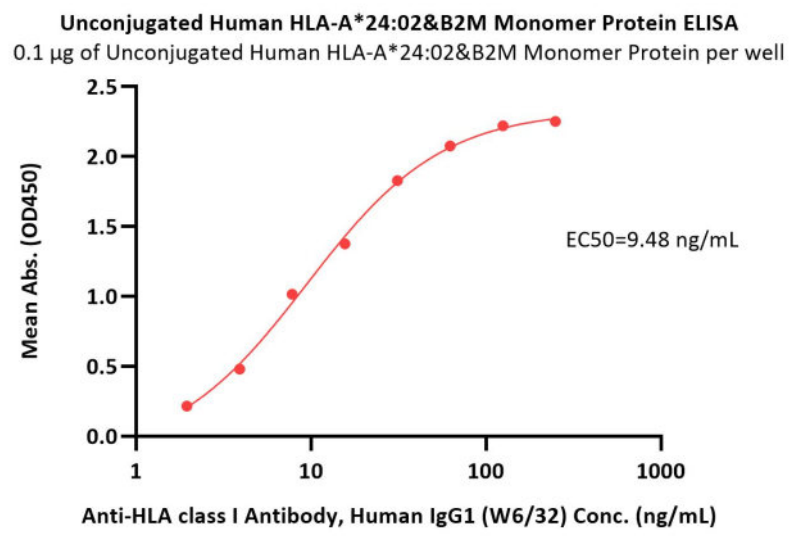


# Unconjugated Human HLA-A\*24:02&B2M Monomer Protein (Peptide free, MALS verified)

Catalog # HLM-H52E4



BIOSYSTEMS  
**Acro**



Immobilized Unconjugated Human HLA-A\*24:02&B2M Monomer Protein (Cat. No. HLM-H52E4) at 1 µg/mL (100 µL/well) can bind Anti-HLA class I Antibody, Human IgG1 (W6/32) with a linear range of 2-31 ng/mL (QC tested).

Immobilized Unconjugated Human HLA-A\*24:02&B2M Monomer Protein (Cat. No. HLM-H52E4) at 1 µg/mL (100 µL/well) can bind Anti-B2M Antibody, Human IgG1 with a linear range of 0.12-2 ng/mL (Routinely tested).

## Clinical and Translational Updates

Discounts, Gifts,  
and more!



➤ [www.acrobiosystems.com](http://www.acrobiosystems.com)