

**Synonym**

IL-22,IL-TIF,ZCYTO18

**Source**

Human IL-22, His Tag(IL2-H524a) is expressed from human 293 cells (HEK293). It contains AA Ala 34 - Ile 179 (Accession # [Q9GZX6-1](#)).

Predicted N-terminus: His

**Molecular Characterization**

Poly-his IL-22(Ala 34 - Ile 179)  
Q9GZX6-1

This protein carries a polyhistidine tag at the N-terminus

The protein has a calculated MW of 18.6 kDa. The protein migrates as 28-34 kDa under reducing (R) condition (SDS-PAGE) due to glycosylation.

**Endotoxin**

Less than 1.0 EU per µg by the LAL method.

**Purity**

>90% as determined by SDS-PAGE.

**Formulation**

Lyophilized from 0.22 µm filtered solution in PBS, pH7.4 with trehalose as protectant.

Contact us for customized product form or formulation.

**Reconstitution**

Please see Certificate of Analysis for specific instructions.

*For best performance, we strongly recommend you to follow the reconstitution protocol provided in the CoA.*

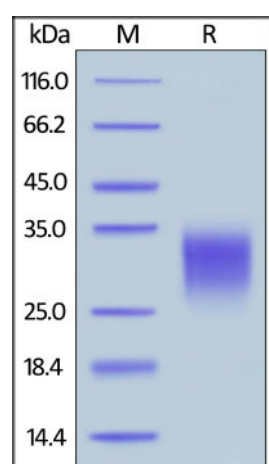
**Storage**

For long term storage, the product should be stored at lyophilized state at -20°C or lower.

*Please avoid repeated freeze-thaw cycles.*

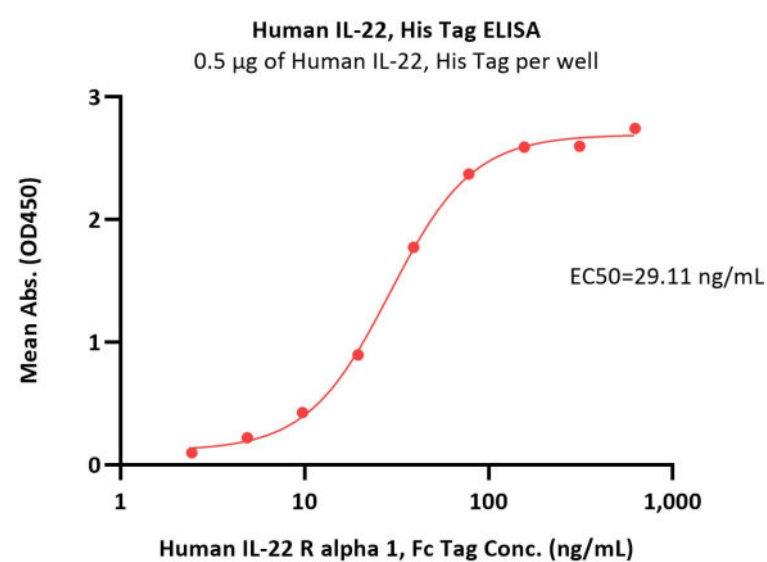
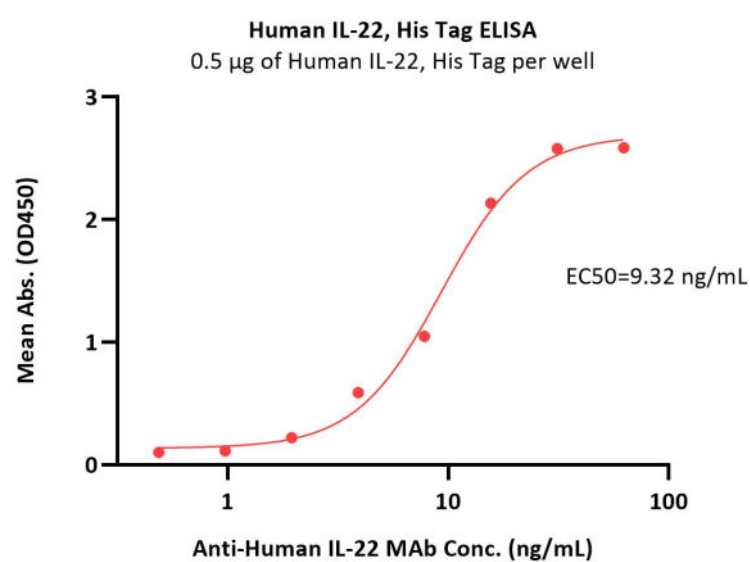
This product is stable after storage at:

- -20°C to -70°C for 12 months in lyophilized state;
- -70°C for 3 months under sterile conditions after reconstitution.

**SDS-PAGE**

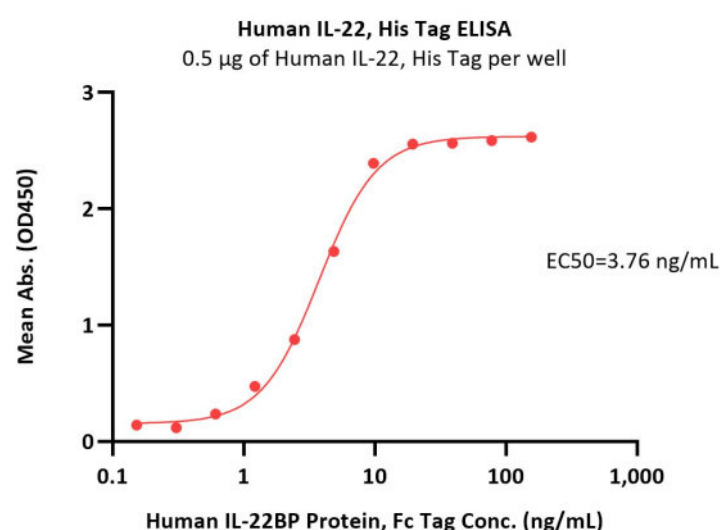
Human IL-22, His Tag on SDS-PAGE under reducing (R) condition. The gel was stained with Coomassie Blue. The purity of the protein is greater than 90%.

**Bioactivity-ELISA**



Immobilized Human IL-22, His Tag (Cat. No. IL2-H524a) at 5 µg/mL (100 µL/well) can bind Anti-Human IL-22 MAb with a linear range of 0.5-16 ng/mL (QC tested).

Immobilized Human IL-22, His Tag (Cat. No. IL2-H524a) at 5 µg/mL (100 µL/well) can bind Human IL-22 R alpha 1, Fc Tag (Cat. No. IL1-H5258) with a linear range of 2-78 ng/mL (Routinely tested).



Immobilized Human IL-22, His Tag (Cat. No. IL2-H524a) at 5 µg/mL (100 µL/well) can bind Human IL-22BP Protein, Fc Tag (Cat. No. ILP-H5254) with a linear range of 0.2-10 ng/mL (Routinely tested).

## Background

Interleukin-22 (IL22) is also known as cytokine Zcyto18, IL-10-related T-cell-derived-inducible factor (IL-TIF), which belongs to the IL-10 family or IL-10 superfamily (including IL-19, IL-20, IL-24, and IL-26), a class of potent mediators of cellular inflammatory responses. IL-22 is produced by activated DC and T cells and initiates innate immune responses against bacterial pathogens especially in epithelial cells such as respiratory and gut epithelial cells. IL-22 biological activity is initiated by binding to a cell-surface complex composed of IL-22R1 and IL-10R2 receptor chains and further regulated by interactions with a soluble binding protein IL-22BP. IL-22 also promotes hepatocyte survival in the liver and epithelial cells in the lung and gut similar to IL-10.

## Clinical and Translational Updates

Please contact us via [TechSupport@acrobiosystems.com](mailto:TechSupport@acrobiosystems.com) if you have any question on this product.