

Synonym

IL-1 R6,IL-1 Rrp2,IL1RL2,IL-1RL2,IL1Rrp2,IL-1Rrp2,IL1RRP2,IL-36R

SourceHuman IL-1 Rrp2, Fc Tag(IL2-H5254) is expressed from human 293 cells (HEK293). It contains AA Asp 20 - Arg 335 (Accession # [Q9HB29-1](#)).

Predicted N-terminus: Asp 20

Molecular Characterization

IL-1 Rrp2(Asp 20 - Arg 335) Q9HB29-1	Fc(Pro 100 - Lys 330) P01857
---	---------------------------------

This protein carries a human IgG1 Fc tag at the C-terminus

The protein has a calculated MW of 62.4 kDa. The protein migrates as 70-90 kDa under reducing (R) condition (SDS-PAGE) due to glycosylation.

Endotoxin

Less than 1.0 EU per µg by the LAL method.

Purity

>95% as determined by SDS-PAGE.

Formulation

Lyophilized from 0.22 µm filtered solution in Tris with Glycine, Arginine and NaCl, pH7.5 with trehalose as protectant.

Contact us for customized product form or formulation.

Reconstitution

Please see Certificate of Analysis for specific instructions.

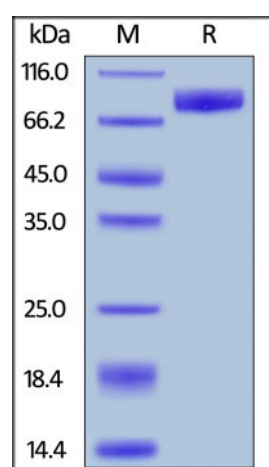
*For best performance, we strongly recommend you to follow the reconstitution protocol provided in the CoA.***Storage**

For long term storage, the product should be stored at lyophilized state at -20°C or lower.

Please avoid repeated freeze-thaw cycles.

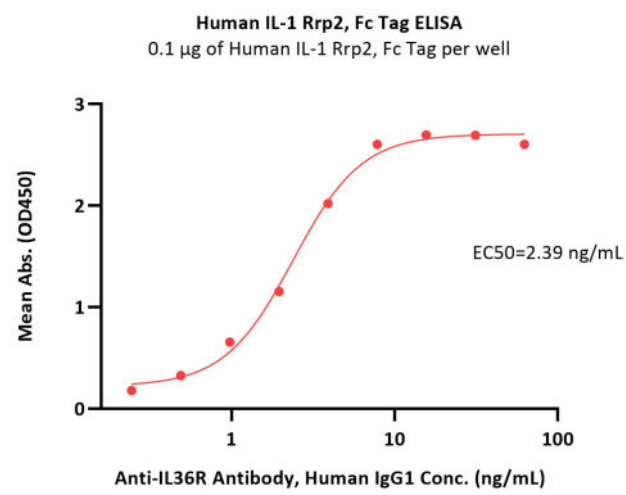
This product is stable after storage at:

- -20°C to -70°C for 12 months in lyophilized state;
- -70°C for 3 months under sterile conditions after reconstitution.

SDS-PAGE

Human IL-1 Rrp2, Fc Tag on SDS-PAGE under reducing (R) condition. The gel was stained with Coomassie Blue. The purity of the protein is greater than 95%.

Bioactivity-ELISA



Immobilized Human IL-1 Rrp2, Fc Tag (Cat. No. IL2-H5254) at 1 µg/mL (100 µL/well) can bind Anti-IL36R Antibody, Human IgG1 with a linear range of 0.2-4 ng/mL (QC tested).

Background

The Interleukin 1 receptor family (IL-1 R) comprises at least eleven members including IL-1 RI (IL-1 R1), IL-1 RII (IL-1 R2), IL-1 RAcP (IL-1 R3), ST2 (T1/IL-1 R4), IL-18 Ra (IL-1 Rrp/IL-1 R5), IL-1 Rrp2 (IL-1 RL2/IL-1 R6), IL-18 Rb (AcPL/IL-1 R7), IL-1RAPL-1 (TIGIRR-2/IL-1 R8), and TIGIRR-1 (IL-1 R9). All family members possess three immunoglobulin (Ig)-like domains in their extracellular region. Most members also have an intracellular TIR (Toll-like receptor/IL-1 receptor signaling) domain that is also conserved in the Toll-like receptor family. Related proteins, SIGIRR (single Ig domain-containing IL-1 R-related molecule) and IL-18BP, differ from the other members by having only one Ig domain.

Clinical and Translational Updates

Please contact us via TechSupport@acrobiosystems.com if you have any question on this product.