

Synonym

IL13,ALRH,BHR1,MGC116786,MGC116788,MGC116789,P600,Interleukin-13

Source

Cynomolgus IL-13, His Tag(IL3-C5249) is expressed from human 293 cells (HEK293). It contains AA Ser 21 - Asn 132 (Accession # [ABG75889.1](#)).

Predicted N-terminus: His

Molecular Characterization

This protein carries a polyhistidine tag at the N-terminus

The protein has a calculated MW of 14.2 kDa. The protein migrates as 29-35 kDa under reducing (R) condition (SDS-PAGE) due to glycosylation.

Endotoxin

Less than 1.0 EU per µg by the LAL method.

Purity

>90% as determined by SDS-PAGE.

Formulation

Lyophilized from 0.22 µm filtered solution in PBS, pH7.4 with trehalose as protectant.

Contact us for customized product form or formulation.

Reconstitution

Please see Certificate of Analysis for specific instructions.

For best performance, we strongly recommend you to follow the reconstitution protocol provided in the CoA.

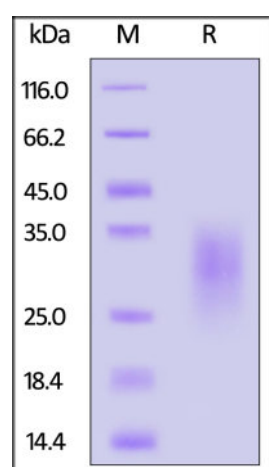
Storage

For long term storage, the product should be stored at lyophilized state at -20°C or lower.

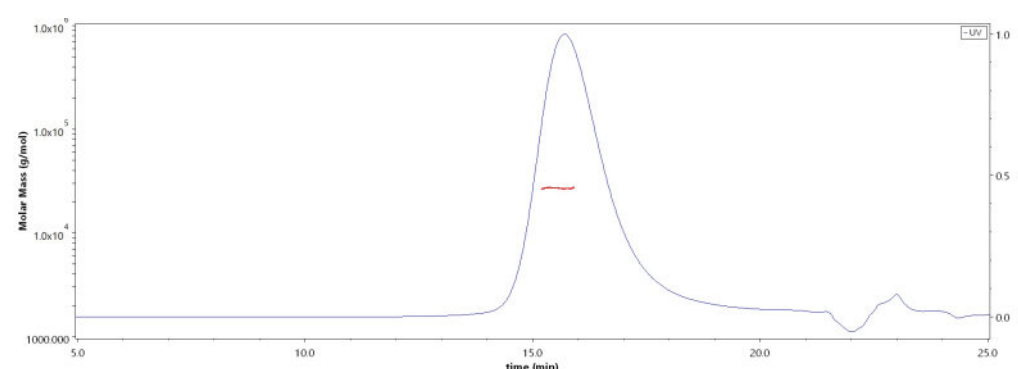
Please avoid repeated freeze-thaw cycles.

This product is stable after storage at:

- -20°C to -70°C for 12 months in lyophilized state;
- -70°C for 3 months under sterile conditions after reconstitution.

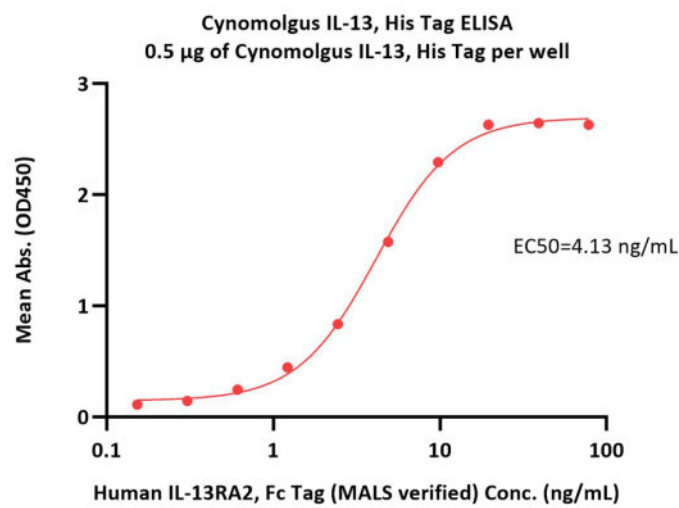
SDS-PAGE

Cynomolgus IL-13, His Tag on SDS-PAGE under reducing (R) condition. The gel was stained with Coomassie Blue. The purity of the protein is greater than 90%.

Bioactivity-ELISA**SEC-MALS**

The purity of Cynomolgus IL-13, His Tag (Cat. No. IL3-C5249) is more than 85% and the molecular weight of this protein is around 22-30 kDa verified by SEC-MALS.

[Report](#)



Immobilized Cynomolgus IL-13, His Tag (Cat. No. IL3-C5249) at 5 µg/mL (100 µL/well) can bind Human IL-13RA2, Fc Tag (MALS verified) (Cat. No. IL2-H5256) with a linear range of 0.2-10 ng/mL (QC tested).

Background

Interleukin 13 (IL13) is also known as ALRH, BHR1 and P600, is a single-chain glycosylated polypeptide, and is a cytokine critical in regulating inflammatory and immune responses. IL13 is secreted by many cell types, but especially by T helper type 2 (Th2) cells. IL-13 induces its effects through a multi-subunit receptor that includes the alpha chain of the IL-4 receptor (IL-4R α) and at least one of two known IL-13-specific binding chains. The functions of IL-13 overlap considerably with those of IL-4, especially with regard to changes induced on hematopoietic cells, but these effects are probably less important given the more potent role of IL-4. IL-13 induces matrix metalloproteinases (MMPs) as part of a mechanism that protects against excessive allergic inflammation that predisposes to asphyxiation. IL-13 induces many features of allergic lung disease, including airway hyperresponsiveness, goblet cell metaplasia and mucus hypersecretion, which all contribute to airway obstruction.

Clinical and Translational Updates

Please contact us via TechSupport@acrobiosystems.com if you have any question on this product.