

**Synonym**

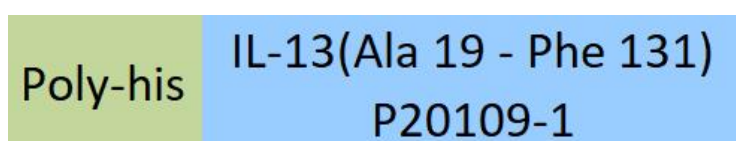
IL13,ALRH,BHR1,MGC116786,MGC116788,MGC116789,P600,Interleukin-13

**Source**

Mouse IL-13, His Tag(IL3-M5249) is expressed from human 293 cells (HEK293). It contains AA Ala 19 - Phe 131 (Accession # [P20109-1](#)).

Predicted N-terminus: His

**Molecular Characterization**



This protein carries a polyhistidine tag at the N-terminus

The protein has a calculated MW of 14.2 kDa. The protein migrates as 16-30 kDa under reducing (R) condition (SDS-PAGE) due to glycosylation.

**Endotoxin**

Less than 1.0 EU per µg by the LAL method.

**Purity**

>90% as determined by SDS-PAGE.

**Formulation**

Lyophilized from 0.22 µm filtered solution in PBS, pH7.4 with trehalose as protectant.

Contact us for customized product form or formulation.

**Reconstitution**

Please see Certificate of Analysis for specific instructions.

*For best performance, we strongly recommend you to follow the reconstitution protocol provided in the CoA.*

**Storage**

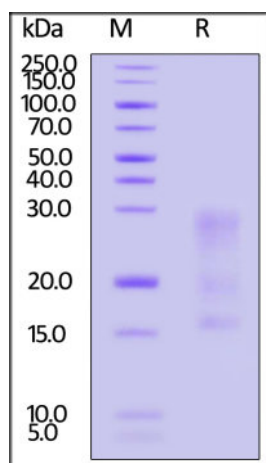
For long term storage, the product should be stored at lyophilized state at -20°C or lower.

*Please avoid repeated freeze-thaw cycles.*

This product is stable after storage at:

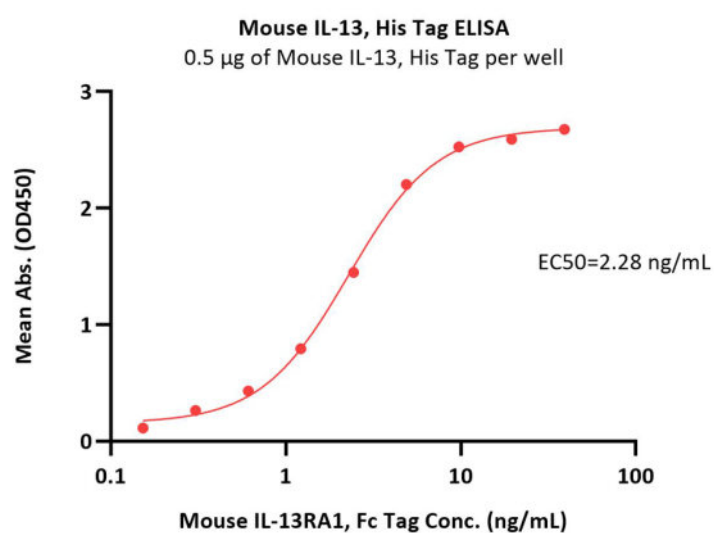
- -20°C to -70°C for 12 months in lyophilized state;
- -70°C for 3 months under sterile conditions after reconstitution.

**SDS-PAGE**



Mouse IL-13, His Tag on SDS-PAGE under reducing (R) condition. The gel was stained with Coomassie Blue. The purity of the protein is greater than 90%.

**Bioactivity-ELISA**



Immobilized Mouse IL-13, His Tag (Cat. No. IL3-M5249) at 5 µg/mL (100 µL/well) can bind Mouse IL-13RA1, Fc Tag (Cat. No. IL1-M5258) with a linear range of 0.3-5 ng/mL (QC tested).

### Background

Interleukin 13 (IL13) is also known as ALRH, BHR1 and P600, is a single-chain glycosylated polypeptide, and is a cytokine critical in regulating inflammatory and immune responses. IL13 is secreted by many cell types, but especially by T helper type 2 (Th2) cells. IL-13 induces its effects through a multi-subunit receptor that includes the alpha chain of the IL-4 receptor (IL-4R $\alpha$ ) and at least one of two known IL-13-specific binding chains. The functions of IL-13 overlap considerably with those of IL-4, especially with regard to changes induced on hematopoietic cells, but these effects are probably less important given the more potent role of IL-4. IL-13 induces matrix metalloproteinases (MMPs) as part of a mechanism that protects against excessive allergic inflammation that predisposes to asphyxiation. IL-13 induces many features of allergic lung disease, including airway hyperresponsiveness, goblet cell metaplasia and mucus hypersecretion, which all contribute to airway obstruction.

### Clinical and Translational Updates

Please contact us via [TechSupport@acrobiosystems.com](mailto:TechSupport@acrobiosystems.com) if you have any question on this product.