



## Synonym

IL6, Interleukin-6, BSF2, HSF, IFNB2

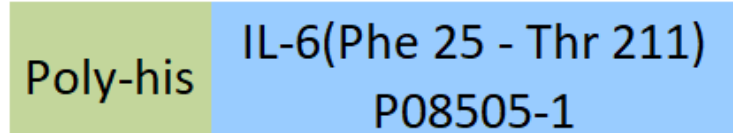
## Source

Mouse IL-6, His Tag (IL6-M5245) is expressed from human 293 cells (HEK293).

It contains AA Phe 25 - Thr 211 (Accession # [P08505-1](#)).

Predicted N-terminus: His

## Molecular Characterization



This protein carries a polyhistidine tag at the N-terminus.

The protein has a calculated MW of 23.6 kDa. The protein migrates as 25-35 kDa when calibrated against [Star Ribbon Pre-stained Protein Marker](#) under reducing (R) condition (SDS-PAGE) due to glycosylation.

## Endotoxin

Less than 1.0 EU per  $\mu$ g by the LAL method.

## Purity

>90% as determined by SDS-PAGE.

## Formulation

Lyophilized from 0.22  $\mu$ m filtered solution in PBS, pH7.4 with trehalose as protectant.

Contact us for customized product form or formulation.

## Reconstitution

Please see Certificate of Analysis for specific instructions.

*For best performance, we strongly recommend you to follow the reconstitution protocol provided in the CoA.*

## Storage

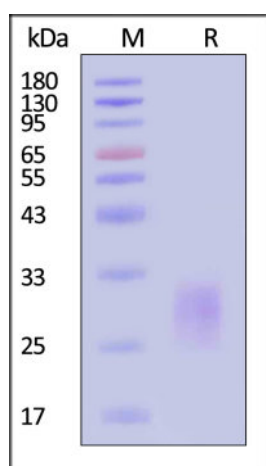
For long term storage, the product should be stored at lyophilized state at  $-20^{\circ}\text{C}$  or lower.

*Please avoid repeated freeze-thaw cycles.*

This product is stable after storage at:

- $-20^{\circ}\text{C}$  to  $-70^{\circ}\text{C}$  for 12 months in lyophilized state;
- $-70^{\circ}\text{C}$  for 3 months under sterile conditions after reconstitution.

## SDS-PAGE

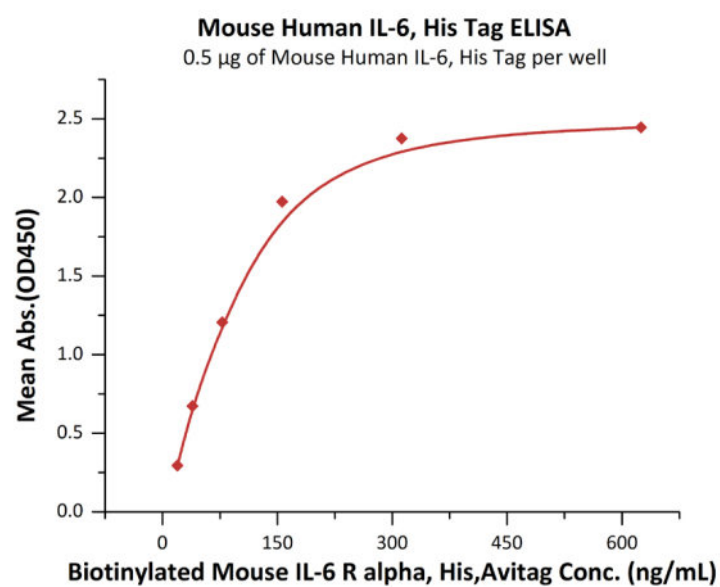


Mouse IL-6, His Tag on SDS-PAGE under reducing (R) condition. The gel was stained with Coomassie Blue. The purity of the protein is greater than 90% (With [Star Ribbon Pre-stained Protein Marker](#)).

## Bioactivity-ELISA

Discounts, Gifts,  
and more!





Immobilized Mouse IL-6, His Tag (Cat. No. IL6-M5245) at 5 µg/mL (100 µL/well) can bind Biotinylated Mouse IL-6 R alpha, His,Avitag (Cat. No. ILR-M82E9) with a linear range of 20-156 ng/mL (QC tested).

### Background

Interleukin 6 (IL-6) is also known as HGF, BSF2, HSF, IFNB2 and IL-6, originally identified as a B cell differentiation factor, is a multifunctional cytokine that regulates immune responses, hematopoiesis, acute phase responses, and inflammatory reactions. It is secreted by T cells, macrophages, monocytes, fibroblasts, endothelial cells, et al. to stimulate immune response to trauma, especially burns or other tissue damage leading to inflammation. Interleukin 6 has been shown to interact with interleukin-6 receptor and glycoprotein. IL-6 is relevant to many disease processes such as diabetes, atherosclerosis, depression, Alzheimer's Disease, systemic lupus erythematosus, prostate cancer and rheumatoid arthritis. Advanced/metastatic cancer patients have higher levels of IL-6 in their blood. Hence there is an interest in developing anti-IL-6 agents as therapy against many of these diseases.

### Clinical and Translational Updates

Discounts, Gifts,  
and more!

