

**Synonym**

IL-15 R alpha,CD215,IL15RA,IL-15RA,IL-15R-alpha

**Source**

FITC-Labeled Human IL-15 R alpha, Fc Tag(ILA-HF255) is expressed from human 293 cells (HEK293). It contains AA Ile 31-Thr 205 (Accession # [Q13261-1](#)).

Predicted N-terminus: Ile 31

**Molecular Characterization**

IL-15 R alpha(Ile 31-Thr 205) Q13261-1	Fc(Pro 100 - Lys 330) P01857
---	---------------------------------

This protein carries a human IgG1 Fc tag at the C-terminus

The protein has a calculated MW of 44.8 kDa. The protein migrates as 60-80 kDa under reducing (R) condition (SDS-PAGE) due to glycosylation.

**Conjugate**

FITC

Excitation source: 488 nm spectral line, argon-ion laser

Excitation Wavelength: 488 nm

Emission Wavelength: 535 nm

**Labeling**

*The primary amines in the side chains of lysine residues and the N-terminus of the protein are conjugated with FITC using standard chemical labeling method. The residual FITC is removed by molecular sieve treatment during purification process.*

**Protein Ratio**

The FITC to protein molar ratio is 1.5-3.5.

**Endotoxin**

Less than 1.0 EU per µg by the LAL method.

**Purity**

&gt;95% as determined by SDS-PAGE.

**Formulation**

Lyophilized from 0.22 µm filtered solution in PBS, 0.2 M Arginine, pH7.4 with trehalose as protectant.

Contact us for customized product form or formulation.

**Reconstitution**

Please see Certificate of Analysis for specific instructions.

*For best performance, we strongly recommend you to follow the reconstitution protocol provided in the CoA.*

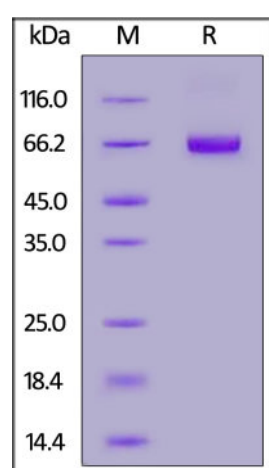
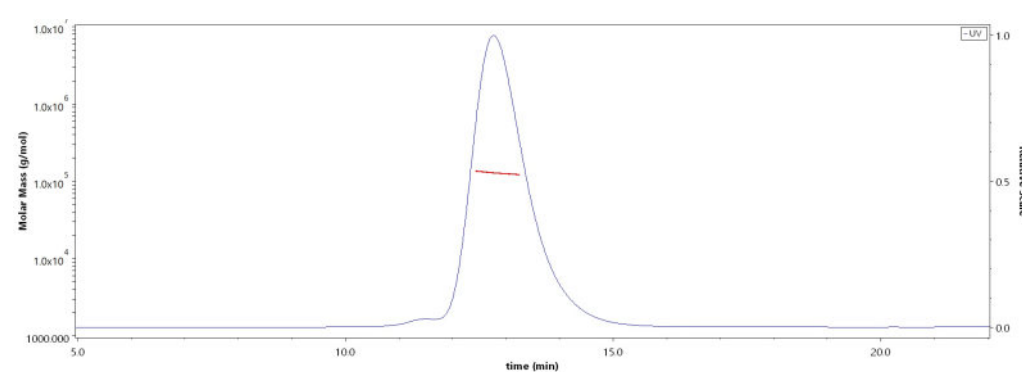
**Storage**

For long term storage, the product should be stored at lyophilized state at -20°C or lower.

*Please protect from light and avoid repeated freeze-thaw cycles.*

This product is stable after storage at:

- -20°C to -70°C for 12 months in lyophilized state;
- -70°C for 3 months under sterile conditions after reconstitution.

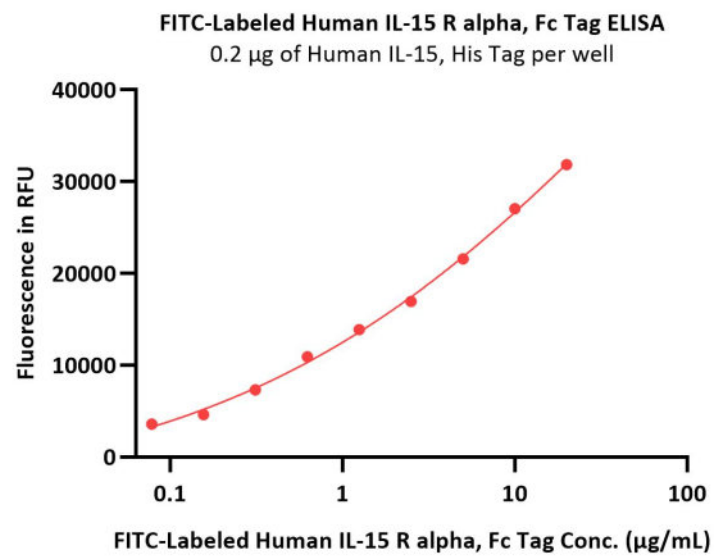
**SDS-PAGE****SEC-MALS**

FITC-Labeled Human IL-15 R alpha, Fc Tag on SDS-PAGE under reducing (R) condition. The gel was stained with Coomassie Blue. The purity of the protein is greater than 95%.

The purity of FITC-Labeled Human IL-15 R alpha, Fc Tag (Cat. No. ILA-HF255) is more than 85% and the molecular weight of this protein is around 115-140 kDa verified by SEC-MALS.

[Report](#)

### Bioactivity-ELISA



Immobilized Human IL-15, His Tag (Cat. No. IL5-H52H8) at 2 µg/mL (100 µL/well) can bind FITC-Labeled Human IL-15 R alpha, Fc Tag (Cat. No. ILA-HF255) with a linear range of 0.078-5 µg/mL (QC tested).

### Background

IL15R is a heterotrimer of IL15RA, IL2RB and IL2RG. IL-15RA, also known as CD215, IL-15 R alpha, is a widely expressed 60 kDa transmembrane glycoprotein. High-affinity receptor for interleukin-15. Can signal both in cis and trans where IL15R from one subset of cells presents IL15 to neighboring IL2RG-expressing cells. Expression of different isoforms may alter or interfere with signal transduction. An interleukin (IL)-15 superagonist/IL-15 receptor  $\alpha$  fusion complex (IL-15SA/IL-15RA; ALT-803) activates the IL-15 receptor on CD8 T cells and NK cells, and has shown significant anti-tumor. Signal transduction involves SYK. Higher levels of soluble sIL-15RA form in comparison with membrane-bound forms is present in all brain structures.

### Clinical and Translational Updates

Please contact us via [TechSupport@acrobiosystems.com](mailto:TechSupport@acrobiosystems.com) if you have any question on this product.