



Synonym

IL-12 R beta 1, IL12RB1, CD212, IL12R, IL12RB, IL-12RB1

Source

Human IL-12 R beta 1, His Tag (ILB-H52H9) is expressed from human 293 cells (HEK293). It contains AA Cys 24 - Glu 540 (Accession # [P42701-1](#)).

Predicted N-terminus: Cys 24

Molecular Characterization

IL-12RB1(Cys 24 - Glu 540)
P42701-1 Poly-his

This protein carries a polyhistidine tag at the C-terminus.

The protein has a calculated MW of 59.0 kDa. The protein migrates as 64-68 kDa under reducing (R) condition (SDS-PAGE) due to glycosylation.

Endotoxin

Less than 1.0 EU per µg by the LAL method.

Purity

>90% as determined by SDS-PAGE.

Formulation

Lyophilized from 0.22 µm filtered solution in PBS, pH7.4 with trehalose as protectant.

Contact us for customized product form or formulation.

Reconstitution

Please see Certificate of Analysis for specific instructions.

For best performance, we strongly recommend you to follow the reconstitution protocol provided in the CoA.

Storage

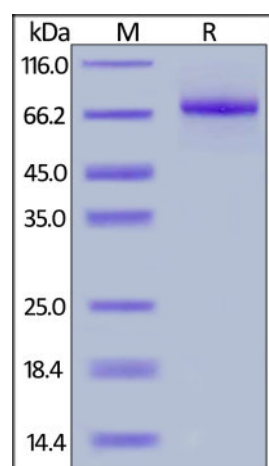
For long term storage, the product should be stored at lyophilized state at -20°C or lower.

Please avoid repeated freeze-thaw cycles.

This product is stable after storage at:

- -20°C to -70°C for 12 months in lyophilized state;
- -70°C for 3 months under sterile conditions after reconstitution.

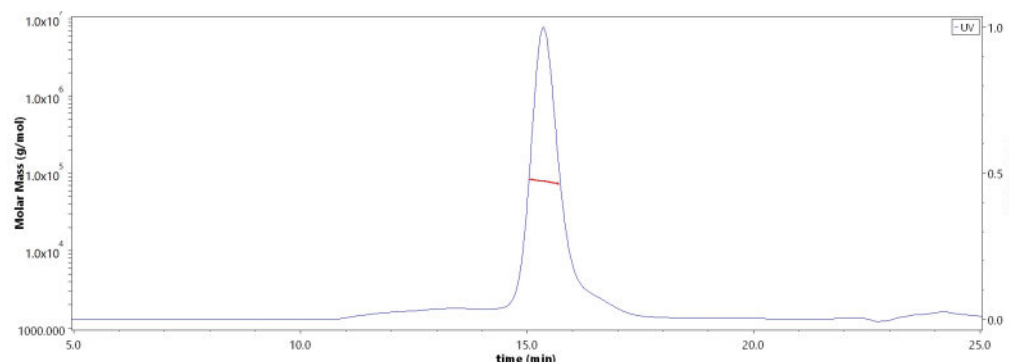
SDS-PAGE



Human IL-12 R beta 1, His Tag on SDS-PAGE under reducing (R) condition. The gel was stained with Coomassie Blue. The purity of the protein is greater than 90%.

Bioactivity-ELISA

SEC-MALS



The purity of Human IL-12 R beta 1, His Tag (Cat. No. ILB-H52H9) is more than 85% and the molecular weight of this protein is around 65-85 kDa verified by SEC-MALS.

[Report](#)

Discounts, Gifts,
and more!

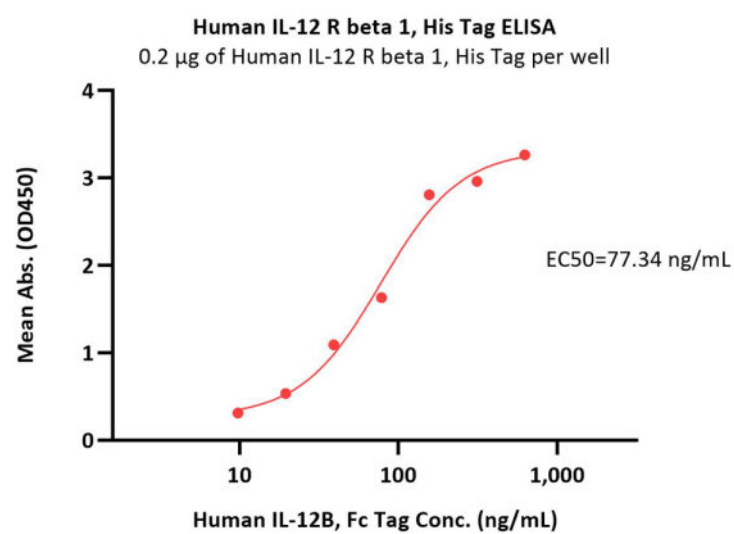


Human IL-12 R beta 1 / CD212 Protein, His Tag (MALS verified)

Catalog # ILB-H52H9



BIOSYSTEMS
Acro



Immobilized Human IL-12 R beta 1, His Tag (Cat. No. ILB-H52H9) at 2 µg/mL (100 µL/well) can bind Human IL-12B, Fc Tag (Cat. No. NK2-H5258) with a linear range of 5-156 ng/mL (QC tested).

Background

The human IL-12 R subunit is a member of the cytokine receptor superfamily and the functional high-affinity IL-12R is composed of at least two beta-type cytokine receptor subunits, each independently exhibiting a low affinity for IL-12. IL-12 R beta 1 (Interleukin-12 receptor subunit beta-1) is also known as IL-12RB1, CD212. Functions as an interleukin receptor which binds interleukin-12 with low affinity and is involved in IL12 transduction. Associated with IL12RB2 it forms a functional, high affinity receptor for IL12. Associates also with IL23R to form the interleukin-23 receptor which functions in IL23 signal transduction probably through activation of the Jak-Stat signaling cascade.

Clinical and Translational Updates

Discounts, Gifts,
and more!



➤ www.acrobiosystems.com

6/12/2024