

Synonym

IL1RAP,IL-1RAcP,C3orf13,IL1R3

Source

FITC-Labeled Human IL-1 RAcP / IL-1 R3, His Tag(ILP-HF223) is expressed from human 293 cells (HEK293). It contains AA 21 Ser - 359 Glu (Accession # [Q9NPH3-1](#)).

Predicted N-terminus: Ser 21

Molecular Characterization

IL-1 RAcP(21 Ser - 359 Glu)
Q9NPH3-1 Poly-his

This protein carries a polyhistidine tag at the C-terminus

The protein has a calculated MW of 39.69 kDa. The protein migrates as 50-60 kDa under reducing (R) condition (SDS-PAGE) due to glycosylation.

Conjugate

FITC

Excitation source: 488 nm spectral line, argon-ion laser

Excitation Wavelength: 488 nm

Emission Wavelength: 535 nm

Labeling

The primary amines in the side chains of lysine residues and the N-terminus of the protein are conjugated with FITC using standard chemical labeling method. The residual FITC is removed by molecular sieve treatment during purification process.

Protein Ratio

The FITC to protein molar ratio is 1.5-3.5.

Endotoxin

Less than 1.0 EU per µg by the LAL method.

Purity

>95% as determined by SDS-PAGE.

Formulation

Lyophilized from 0.22 µm filtered solution in PBS, pH7.4 with trehalose as protectant.

Contact us for customized product form or formulation.

Reconstitution

Please see Certificate of Analysis for specific instructions.

For best performance, we strongly recommend you to follow the reconstitution protocol provided in the CoA.

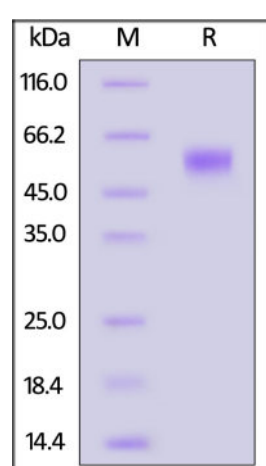
Storage

For long term storage, the product should be stored at lyophilized state at -20°C or lower.

Please protect from light and avoid repeated freeze-thaw cycles.

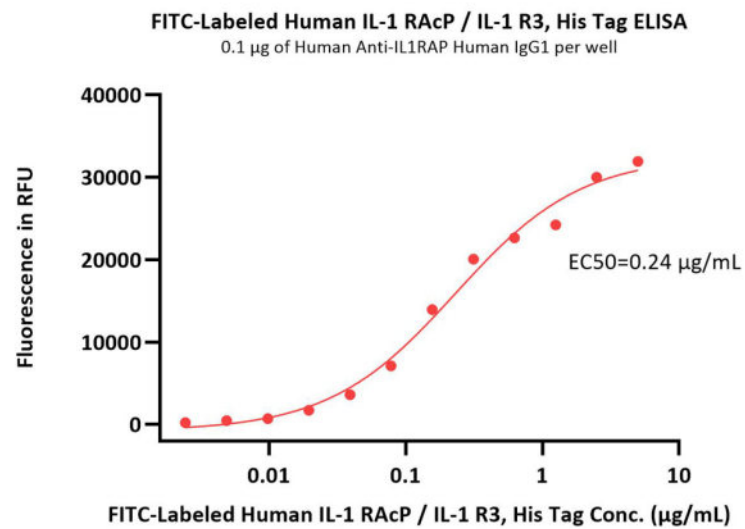
This product is stable after storage at:

- -20°C to -70°C for 12 months in lyophilized state;
- -70°C for 3 months under sterile conditions after reconstitution.

SDS-PAGE

FITC-Labeled Human IL-1 RAcP / IL-1 R3, His Tag on SDS-PAGE under reducing (R) condition. The gel was stained overnight with Coomassie Blue. The purity of the protein is greater than 95%.

Bioactivity-ELISA



Immobilized Human Anti-IL1RAP Human IgG1 at 1 µg/mL (100 µL/well) can bind FITC-Labeled Human IL-1 RAcP / IL-1 R3, His Tag (Cat. No. ILP-HF223) with a linear range of 0.002-0.313 µg/mL (QC tested).

Background

Interleukin-1 receptor accessory protein (IL1RAP or IL-1RAcP) is also known as Interleukin-1 receptor 3 (IL-1R-3 or IL-1R3), C3orf13, which belongs to the interleukin-1 receptor family. IL1RAP contains three Ig-like C2-type (immunoglobulin-like) domains and one TIR domain. IL1RAP is detected in liver, skin, placenta, thymus and lung. IL-1R3 / IL1RAP is coreceptor with IL1R1, associates with IL1R1 bound to IL1B to form the high affinity interleukin-1 receptor complex which mediates interleukin-1-dependent activation of NF-kappa-B and other pathways.

Clinical and Translational Updates

Please contact us via TechSupport@acrobiosystems.com if you have any question on this product.