



Synonym

INSR, Insulin receptor, IR, CD220

Source

Cat Insulin R (28-956) Protein, His Tag (INR-C52H3) is expressed from human 293 cells (HEK293). It contains AA His 28 - Ile 956 (Accession # [A0A2I2UE37](#)).

Predicted N-terminus: His 28

Molecular Characterization

Insulin R (His 28 - Ile 956)
A0A2I2UE37 Poly-his

This protein carries a polyhistidine tag at the C-terminus.

The protein has a calculated MW of 107.5 kDa. The protein migrates as 110-130 kDa when calibrated against [Star Ribbon Pre-stained Protein Marker](#) under reducing (R) condition (SDS-PAGE) due to glycosylation.

Endotoxin

Less than 1.0 EU per µg by the LAL method.

Purity

>95% as determined by SDS-PAGE.

Formulation

Lyophilized from 0.22 µm filtered solution in PBS, pH7.4 with trehalose as protectant.

Contact us for customized product form or formulation.

Reconstitution

Please see Certificate of Analysis for specific instructions.

For best performance, we strongly recommend you to follow the reconstitution protocol provided in the CoA.

Storage

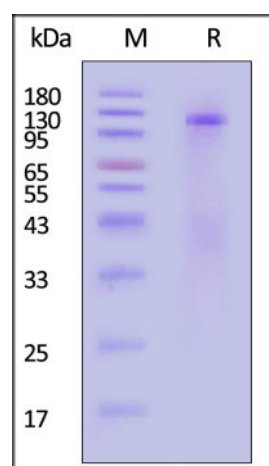
For long term storage, the product should be stored at lyophilized state at -20°C or lower.

Please avoid repeated freeze-thaw cycles.

This product is stable after storage at:

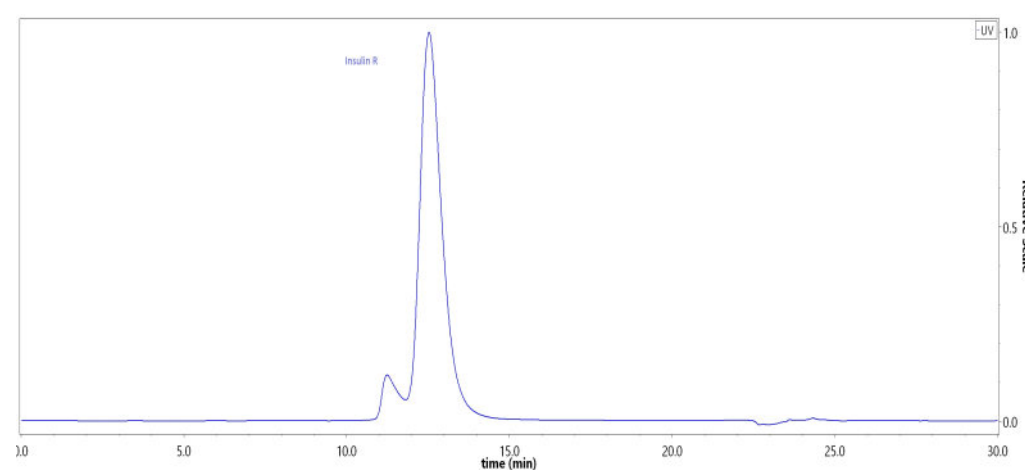
- -20°C to -70°C for 12 months in lyophilized state;
- -70°C for 3 months under sterile conditions after reconstitution.

SDS-PAGE



Cat Insulin R (28-956) Protein, His Tag on SDS-PAGE under reducing (R) condition. The gel was stained with Coomassie Blue. The purity of the protein is greater than 95% (With [Star Ribbon Pre-stained Protein Marker](#)).

SEC-HPLC



The purity of Cat Insulin R (28-956) Protein, His Tag (Cat. No. INR-C52H3) was greater than 85% as determined by SEC-HPLC.

Background

Insulin receptor (INSR) is also known as CD antigen CD220, which can be cleaved into the following 2 chains: Insulin receptor subunit alpha and Insulin receptor subunit beta. INSR is a tetramer of 2 alpha and 2 beta chains linked by disulfide bonds. The alpha chains carry the insulin-binding regions, while the beta chains carry the kinase domain. Forms a hybrid receptor with IGF1R, the hybrid is a tetramer consisting of 1 alpha chain and 1 beta chain of INSR and 1 alpha chain and 1

Discounts, Gifts,
and more!



Cat Insulin R / CD220 (28-956) Protein, His Tag (HPLC verified)

Catalog # INR-C52H3



BIOSYSTEMS
Acro

beta chain of IGF1R. In addition to binding insulin, the insulin receptor can bind insulin-like growth factors (IGFI and IGFII). Isoform Short of INSR has a higher affinity for IGFII binding. When present in a hybrid receptor with IGF1R, INSR binds IGF1.

Clinical and Translational Updates

Discounts, Gifts,
and more!



➤ www.acrobiosystems.com

2/6/2024