



Synonym

Integrin alpha E beta 7,ITGAE&ITGB7

Source

Mouse ITGAE&ITGB7 Heterodimer Protein, His Tag&Tag Free(IT7-M53W3) is expressed from CHO cells. It contains AA Phe 20- Val 1114 & Glu 20 - Arg 724 (Accession # [Q60677](#) & [P26011](#)). Predicted N-terminus: Phe 20 & Glu 20

Molecular Characterization

ITGAE (Phe 20- Val 1114) Q60677	Acidic Tail	His
ITGB7 (Glu 20 - Arg 724) P26011	Basic Tail	

The protein has a calculated MW of 127.5 kDa & 81.6 kDa. The protein migrates as 90-95 kDa,130 kDa and 150 kDa when calibrated against [Star Ribbon Pre-stained Protein Marker](#) under non-reducing (NR) condition (SDS-PAGE) due to glycosylation.

Endotoxin

Less than 1.0 EU per µg by the LAL method.

Purity

>90% as determined by SDS-PAGE.

Formulation

Lyophilized from 0.22 µm filtered solution in 50 mM Tris, 150 mM NaCl, pH 7.5 with trehalose as protectant.

Contact us for customized product form or formulation.

Reconstitution

Please see Certificate of Analysis for specific instructions.

For best performance, we strongly recommend you to follow the reconstitution protocol provided in the CoA.

Storage

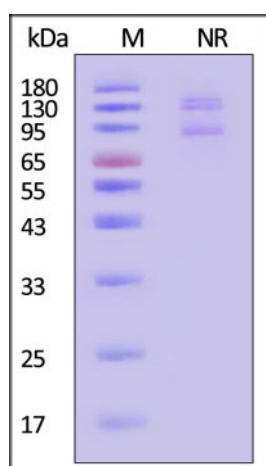
For long term storage, the product should be stored at lyophilized state at -20°C or lower.

Please avoid repeated freeze-thaw cycles.

This product is stable after storage at:

- -20°C to -70°C for 12 months in lyophilized state;
- -70°C for 3 months under sterile conditions after reconstitution.

SDS-PAGE



Mouse ITGAE&ITGB7 Heterodimer Protein, His Tag&Tag Free on SDS-PAGE under non-reducing (NR) condition. The gel was stained with Coomassie Blue. The purity of the protein is greater than 90% (With [Star Ribbon Pre-stained Protein Marker](#)).

Background

Integrin alpha E beta 7 consist of two major subunits: Integrin alpha E (ITGAE) also known as CD103 (cluster of differentiation 103) and Integrin beta-7 is an integrin protein that in humans is encoded by the ITGB7 gene. Integrin alpha E beta 7 (CD103) is expressed mainly by cells of the T lymphocyte lineage within mucosal tissues. This is a strikingly narrow pattern of expression compared with that of other integrins. Lymphocytes expressing alpha E beta 7 are abundant in the

Discounts, Gifts,
and more!



Mouse Integrin alpha E beta 7 (ITGAE&ITGB7) Heterodimer Protein, His Tag&Tag Free

Catalog # IT7-M53W3



BIOSYSTEMS
Acro

gut and comprise a major part of the total T cell complement of the body.

The effectiveness of lung transplantation is marred by the relatively high incidence of rejection. The lung normally contains a large population of lymphocytes in contact with the airway epithelium, a proportion of which expresses the mucosal integrin, alpha(E)(CD103)beta(7). This integrin is not a homing receptor, but is thought to retain lymphocytes at the epithelial surface.

Clinical and Translational Updates

Please contact us via TechSupport@acrobiosystems.com if you have any question on this product.

Discounts, Gifts,
and more!



➤ www.acrobiosystems.com

1/26/2024