

Synonym

LAG3,CD223,FDC

Source

Mouse LAG-3 Protein, Fc Tag(LA3-M5253) is expressed from human 293 cells (HEK293). It contains AA Gly 24 - Leu 442 (Accession # [Q61790-1](#)).

Predicted N-terminus: Gly 24

Molecular Characterization

| | |
|-------------------------------------|---------------------------------|
| LAG-3(Gly 24 - Leu 442) Q61790-1 | Fc(Pro 100 - Lys 330) P01857 |
|-------------------------------------|---------------------------------|

This protein carries a human IgG1 Fc tag at the C-terminus

The protein has a calculated MW of 71.7 kDa. The protein migrates as 80-100 kDa under reducing (R) condition (SDS-PAGE) due to glycosylation.

Endotoxin

Less than 1.0 EU per µg by the LAL method.

Purity

>90% as determined by SDS-PAGE.

>90% as determined by SEC-MALS.

Formulation

Lyophilized from 0.22 µm filtered solution in PBS, pH7.4 with trehalose as protectant.

Contact us for customized product form or formulation.

Reconstitution

Please see Certificate of Analysis for specific instructions.

For best performance, we strongly recommend you to follow the reconstitution protocol provided in the CoA.

Storage

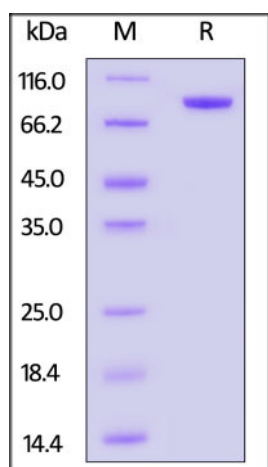
For long term storage, the product should be stored at lyophilized state at -20°C or lower.

Please avoid repeated freeze-thaw cycles.

This product is stable after storage at:

- -20°C to -70°C for 12 months in lyophilized state;
- -70°C for 3 months under sterile conditions after reconstitution.

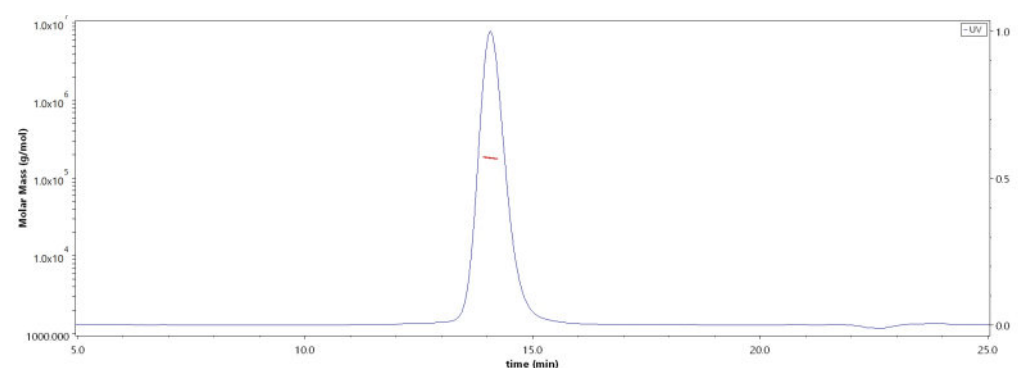
SDS-PAGE



Mouse LAG-3 Protein, Fc Tag on SDS-PAGE under reducing (R) condition. The gel was stained with Coomassie Blue. The purity of the protein is greater than 90%.

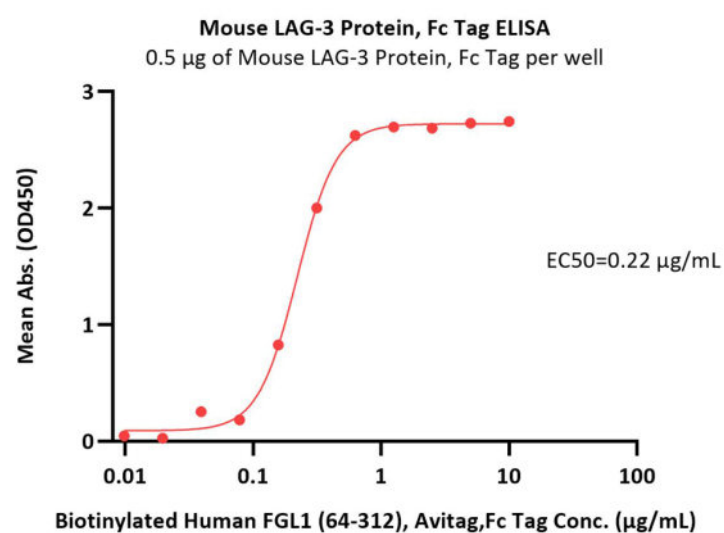
Bioactivity-ELISA

SEC-MALS



The purity of Mouse LAG-3 Protein, Fc Tag (Cat. No. LA3-M5253) is more than 90% and the molecular weight of this protein is around 165-195 kDa verified by SEC-MALS.

[Report](#)



Immobilized Mouse LAG-3 Protein, Fc Tag (Cat. No. LA3-M5253) at 5 µg/mL (100 µL/well) can bind Biotinylated Human FGL1 (64-312), Avitag, Fc Tag (Cat. No. FG1-H82F6) with a linear range of 0.01-0.313 µg/mL (QC tested).

Background

Lymphocyte activation gene 3 protein (LAG3) is also known as CD antigen CD223 and protein FDC, which belongs to immunoglobulin (Ig) superfamily and contains 4 extracellular Ig-like domains. The LAG3 gene contains 8 exons. The sequence data, exon/intron organization, and chromosomal localization all indicate a close relationship of LAG3 to CD4. LAG3 /CD223 involved in lymphocyte activation. LAG3 /CD223 binds to HLA class-II antigens.

Clinical and Translational Updates

Please contact us via TechSupport@acrobiosystems.com if you have any question on this product.