



## Synonym

LAG3,CD223,FDC

## Source

Mouse LAG-3, His Tag(LA3-M52H5) is expressed from human 293 cells (HEK293). It contains AA Gly 24 - Leu 442 (Accession # [Q61790](#)).

Predicted N-terminus: Gly 24

## Molecular Characterization

LAG-3(Gly 24 - Leu 442)  
Q61790 Poly-his

This protein carries a polyhistidine tag at the C-terminus.

The protein has a calculated MW of 47.1 kDa. The protein migrates as 55-65 kDa when calibrated against [Star Ribbon Pre-stained Protein Marker](#) under reducing (R) condition (SDS-PAGE) due to glycosylation.

## Endotoxin

Less than 1.0 EU per µg by the LAL method.

## Purity

>95% as determined by SDS-PAGE.

## Formulation

Lyophilized from 0.22 µm filtered solution in PBS, pH7.4 with trehalose as protectant.

Contact us for customized product form or formulation.

## Reconstitution

Please see Certificate of Analysis for specific instructions.

*For best performance, we strongly recommend you to follow the reconstitution protocol provided in the CoA.*

## Storage

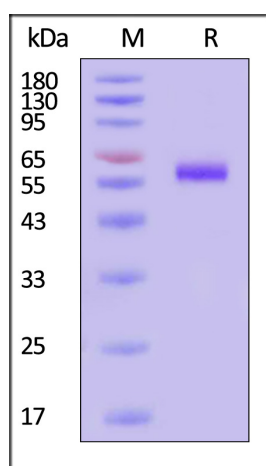
For long term storage, the product should be stored at lyophilized state at -20°C or lower.

*Please avoid repeated freeze-thaw cycles.*

This product is stable after storage at:

- -20°C to -70°C for 12 months in lyophilized state;
- -70°C for 3 months under sterile conditions after reconstitution.

## SDS-PAGE

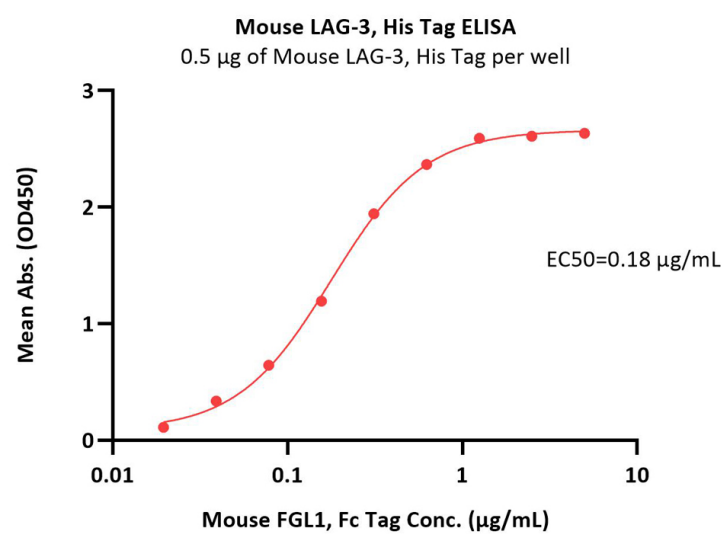


Mouse LAG-3, His Tag on SDS-PAGE under reducing (R) condition. The gel was stained with Coomassie Blue. The purity of the protein is greater than 95% (With [Star Ribbon Pre-stained Protein Marker](#)).

## Bioactivity-ELISA

Discounts, Gifts,  
and more!





Immobilized Mouse LAG-3, His Tag (Cat. No. LA3-M52H5) at 5 µg/mL (100 µL/well) can bind Mouse FGL1, Fc Tag (Cat. No. FG1-M5258) with a linear range of 0.02-0.625 µg/mL (QC tested).

## Background

Lymphocyte activation gene 3 protein (LAG3) is also known as CD antigen CD223 and protein FDC, which belongs to immunoglobulin (Ig) superfamily and contains 4 extracellular Ig-like domains. The LAG3 gene contains 8 exons. The sequence data, exon/intron organization, and chromosomal localization all indicate a close relationship of LAG3 to CD4. LAG3 /CD223 involved in lymphocyte activation. LAG3 /CD223 binds to HLA class-II antigens.

## Clinical and Translational Updates

Discounts, Gifts,  
and more!

