



Product Details

Laminin 411 is a key component of the basement membrane and is involved in the regulation of cell differentiation. Laminin 411 fragment consists of the C-terminal end of the alpha 4, beta 1, and gamma 1 chains.

Key parameter

Purity (SDS PAGE)	> 90%
Mycoplasma Test	Negative
Sterility Test	Negative
Endotoxin Test	< 0.1 EU per µg

Reconstitution

Please see Certificate of Analysis for specific instructions.

For best performance, we strongly recommend you to follow the reconstitution protocol provided in the CoA.

Formulation

Lyophilized from 0.22 µm filtered solution in PBS, pH7.4 with trehalose as protectant.

Contact us for customized product form or formulation.

Storage

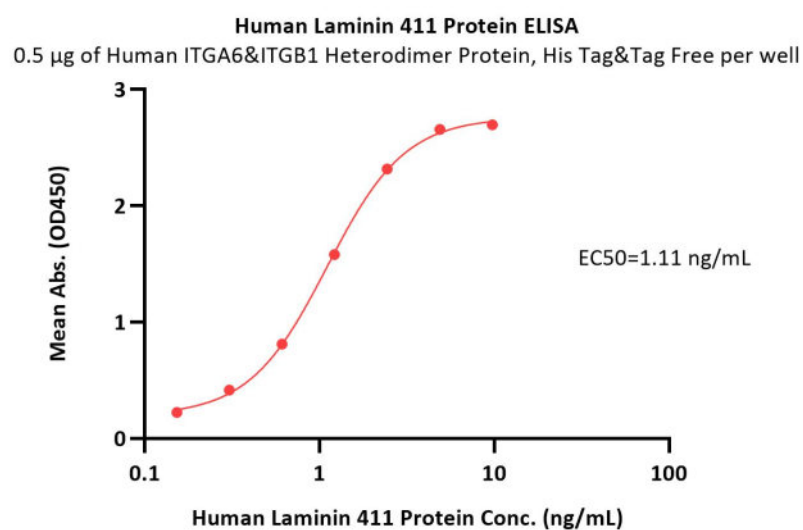
For long term storage, the product should be stored at lyophilized state at -20°C or lower.

Please avoid repeated freeze-thaw cycles.

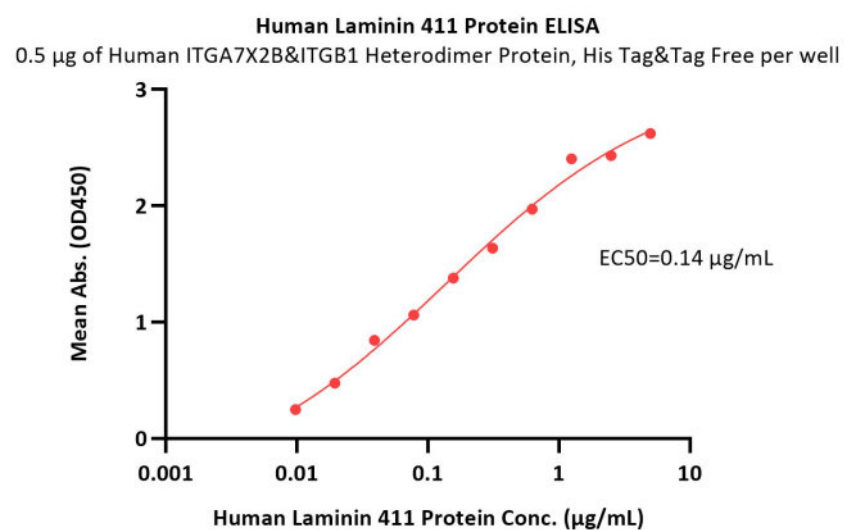
This product is stable after storage at:

- -20°C to -70°C for 24 months in lyophilized state;
- -70°C for 12 months under sterile conditions after reconstitution;
- 2-8°C for 3 months under sterile conditions after reconstitution.

Bioactivity-ELISA



Immobilized Human ITGA6&ITGB1 Heterodimer Protein, His Tag&Tag Free (Cat. No. IT1-H52W7) at 5 µg/mL (100 µL/well) can bind Human Laminin



Immobilized Human ITGA7X2B&ITGB1 Heterodimer Protein, His Tag&Tag Free (Cat. No. IT1-H52W8) at 5 µg/mL (100 µL/well) can bind Human

Discounts, Gifts,
and more!



Human Laminin 411 Protein, premium grade

Catalog # LAT-H5263

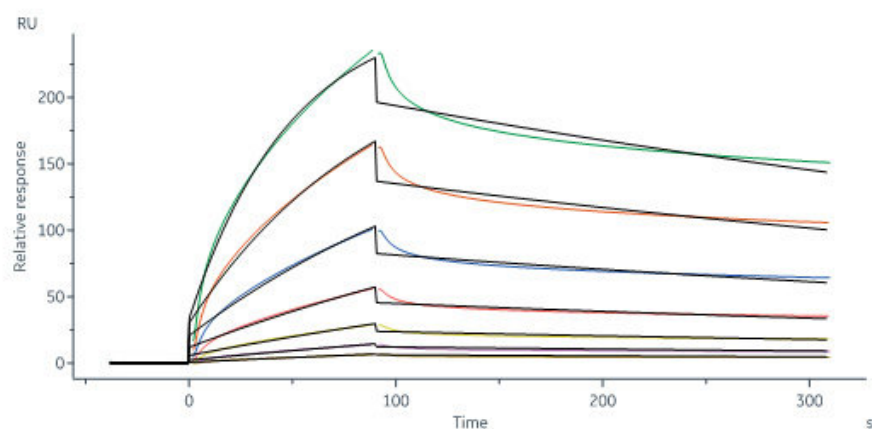


BIOSYSTEMS
Acro

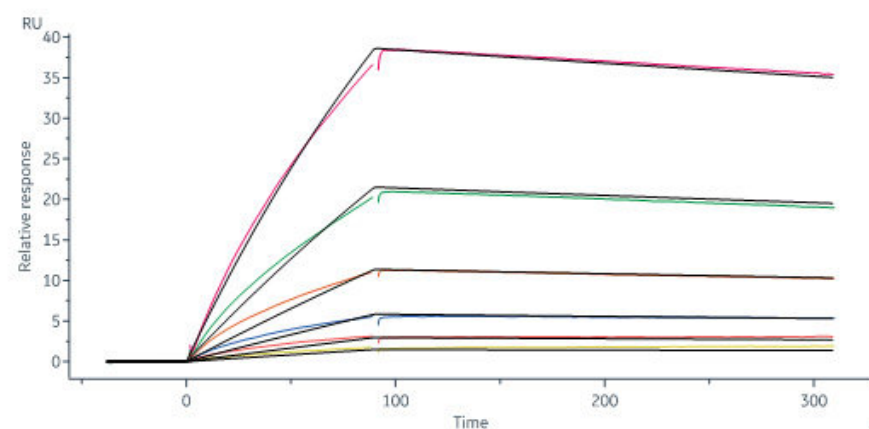
411 Protein, premium grade (Cat. No. LAT-H5263) with a linear range of 0.1-2 ng/mL (QC tested).

Laminin 411 Protein, premium grade (Cat. No. LAT-H5263) with a linear range of 0.01-0.625 μ g/mL (Routinely tested).

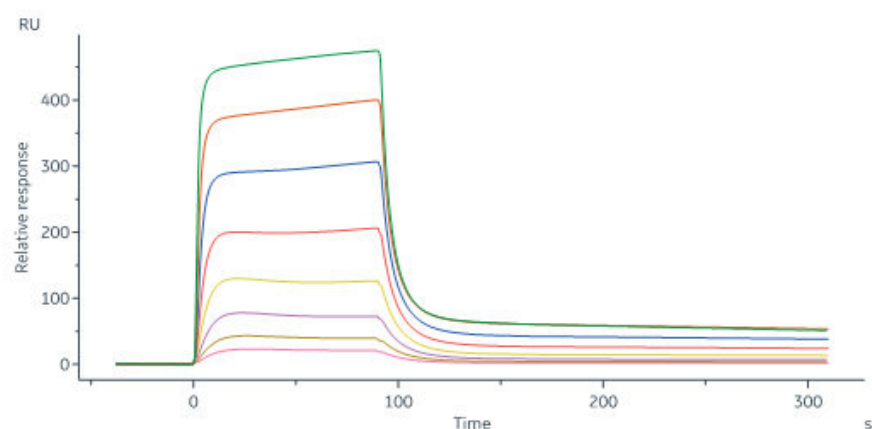
Bioactivity-SPR



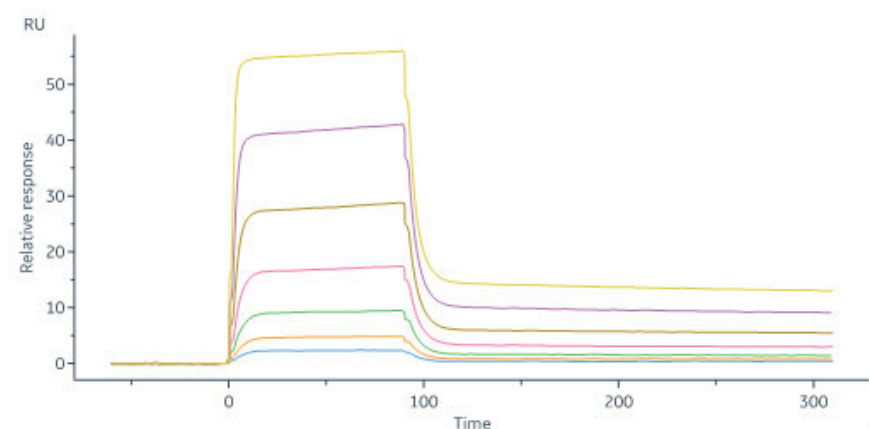
Human Laminin 411 Protein, premium grade (Cat. No. LAT-H5263) immobilized on CM5 Chip can bind Human ITGA6&ITGB1 Heterodimer Protein, His Tag&Tag Free (Cat. No. IT1-H52W7) with an affinity constant of 29.3 nM as determined in a SPR assay (Biacore 8K) (QC tested).



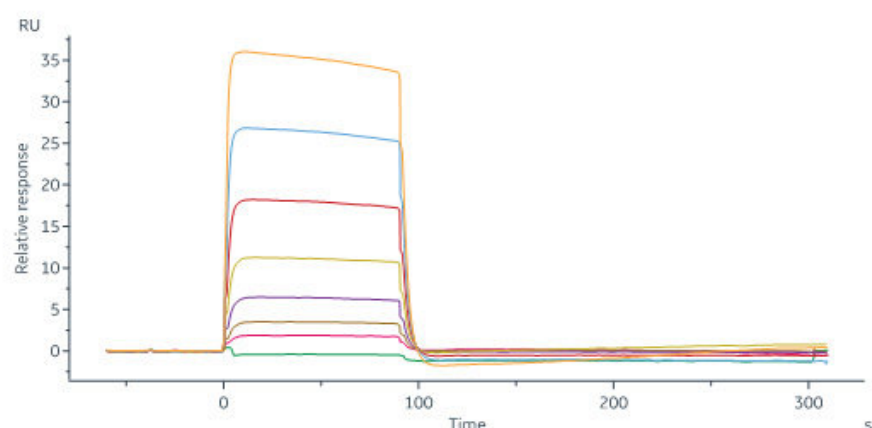
Human Laminin 411 Protein, premium grade (Cat. No. LAT-H5263) immobilized on CM5 Chip can bind Human ITGA7X2B&ITGB1 Heterodimer Protein, His Tag&Tag Free (Cat. No. IT1-H52W8) with an affinity constant of 17.4 nM as determined in a SPR assay (Biacore 8K) (Routinely tested).



Human MCAM, His Tag (Cat. No. CD6-H5229) immobilized on CM5 Chip can bind Human Laminin 411 Protein, premium grade (Cat. No. LAT-H5263) with an affinity constant of 0.115 μ M as determined in a SPR assay (Biacore 8K) (Routinely tested).



Human MCAM, His Tag (Cat. No. CD6-H5229) captured on CM5 chip via anti-His antibody can bind Human Laminin 411 Protein, premium grade (Cat. No. LAT-H5263) with an affinity constant of 27.9 nM as determined in a SPR assay (Biacore 8K) (Routinely tested).



Human Laminin 411 Protein, premium grade (Cat. No. LAT-H5263) captured on Protein A Chip can bind Human MCAM, His Tag (Cat. No. CD6-H5229) with an affinity constant of 107 nM as determined in a SPR assay (Biacore 8K) (Routinely tested).

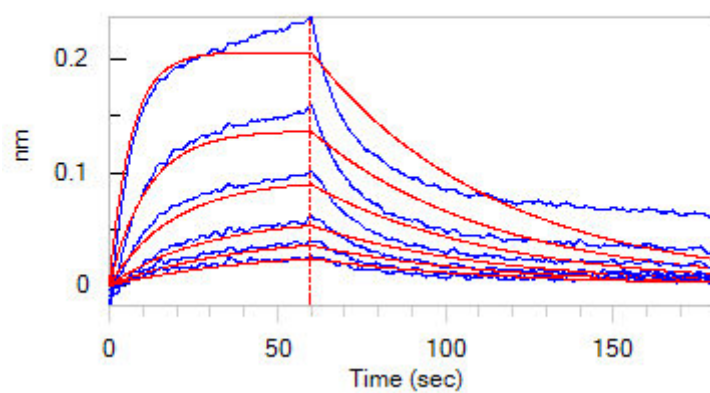
Discounts, Gifts,
and more!



www.acrobiosystems.com



Bioactivity-BLI



Loaded Human Laminin 411 Protein, premium grade (Cat. No. LAT-H5263) on Protein A Biosensor, can bind Human ITGA6&ITGB1 Heterodimer Protein, His Tag&Tag Free (Cat. No. IT1-H52W7) with an affinity constant of 26.9 nM as determined in BLI assay (ForteBio Octet Red96e) (QC tested).

Clinical and Translational Updates

Discounts, Gifts,
and more!

