

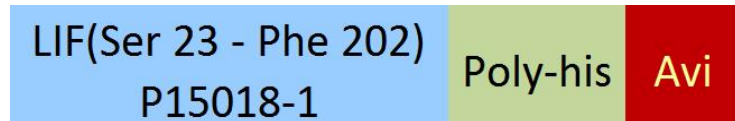
Synonym

LIF,CDF,DIA,HILDA,MLPLI

Source

Biotinylated Human LIF, His,Avitag(LIF-H82E2) is expressed from human 293 cells (HEK293). It contains AA Ser 23 - Phe 202 (Accession # [P15018-1](#)).

Predicted N-terminus: Ser 23

Molecular Characterization

This protein carries a polyhistidine tag at the C-terminus, followed by an Avi tag (Avitag™)

The protein has a calculated MW of 23.4 kDa. The protein migrates as 37-45 kDa under reducing (R) condition (SDS-PAGE) due to glycosylation.

Labeling

Biotinylation of this product is performed using Avitag™ technology. Briefly, the single lysine residue in the Avitag is enzymatically labeled with biotin.

Protein Ratio

Passed as determined by the HABA assay / binding ELISA.

Endotoxin

Less than 1.0 EU per µg by the LAL method.

Purity

>90% as determined by SDS-PAGE.

Formulation

Lyophilized from 0.22 µm filtered solution in PBS, pH7.4 with trehalose as protectant.

Contact us for customized product form or formulation.

Reconstitution

Please see Certificate of Analysis for specific instructions.

For best performance, we strongly recommend you to follow the reconstitution protocol provided in the CoA.

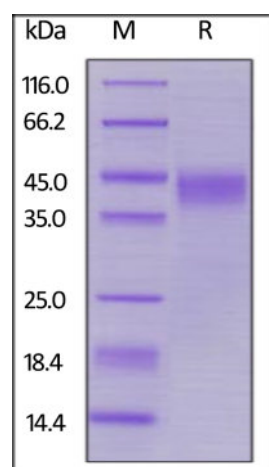
Storage

For long term storage, the product should be stored at lyophilized state at -20°C or lower.

Please avoid repeated freeze-thaw cycles.

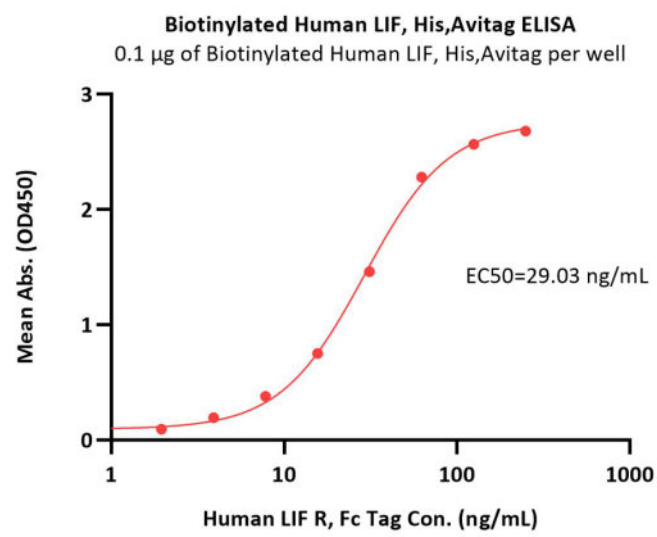
This product is stable after storage at:

- -20°C to -70°C for 12 months in lyophilized state;
- -70°C for 3 months under sterile conditions after reconstitution.

SDS-PAGE

Biotinylated Human LIF, His,Avitag on SDS-PAGE under reducing (R) condition. The gel was stained with Coomassie Blue. The purity of the protein is greater than 90%.

Bioactivity-ELISA



Immobilized Biotinylated Human LIF, His,Avitag (Cat. No. LIF-H82E2) on SA-coated surface at 1 µg/mL (100 µL/well) can bind Human LIF R, Fc Tag (Cat. No. LIR-H4252) with a linear range of 1-31 ng/mL (QC tested).

Background

Leukemia inhibitory factor, or LIF, an interleukin 6 class cytokine, is a protein in cells that affects cell growth and development. Leukemia Inhibitory Factor has several functions such as cholinergic neuron differentiation, control of stem cell pluripotency, bone & fat metabolism, mitogenesis of factor dependent cell lines & promotion of megakaryocyte production in vivo.

Removal of LIF pushes stem cells toward differentiation, but they retain their proliferative potential or pluripotency. Therefore LIF is used in mouse embryonic stem cell culture. It is necessary to maintain the stem cells in an undifferentiated state, however genetic manipulation of embryonic stem cells allows for LIF independent growth, notably overexpression of the gene Nanog. LIF is not required for culture of human embryonic stem cells.

Clinical and Translational Updates

Please contact us via TechSupport@acrobiosystems.com if you have any question on this product.