

**Synonym**

LTBR,D12S370,TNFCR,TNFR3,TNFRSF3,TNFRIII

**Source**

Cynomolgus LTBR / TNFRSF3 Protein, His Tag(LTR-C52H3) is expressed from human 293 cells (HEK293). It contains AA Ser 28 - Thr 229 (Accession # [A0A2K5VGQ6](#)).

**Molecular Characterization**

LTBR(Ser 28 - Thr 229) A0A2K5VGQ6	Poly-his
--------------------------------------	----------

This protein carries a polyhistidine tag at the C-terminus.

The protein has a calculated MW of 24.3 kDa. The protein migrates as 29 kDa 31-33 kDa and 34-38 kDa when calibrated against [Star Ribbon Pre-stained Protein Marker](#) under reducing (R) condition (SDS-PAGE) due to glycosylation.

**Endotoxin**

Less than 1.0 EU per µg by the LAL method.

**Purity**

>90% as determined by SDS-PAGE.

**Formulation**

Lyophilized from 0.22 µm filtered solution in PBS, pH7.4 with trehalose as protectant.

Contact us for customized product form or formulation.

**Reconstitution**

Please see Certificate of Analysis for specific instructions.

*For best performance, we strongly recommend you to follow the reconstitution protocol provided in the CoA.*

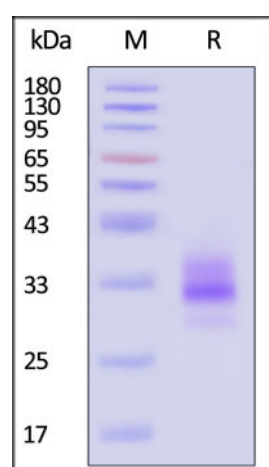
**Storage**

For long term storage, the product should be stored at lyophilized state at -20°C or lower.

*Please avoid repeated freeze-thaw cycles.*

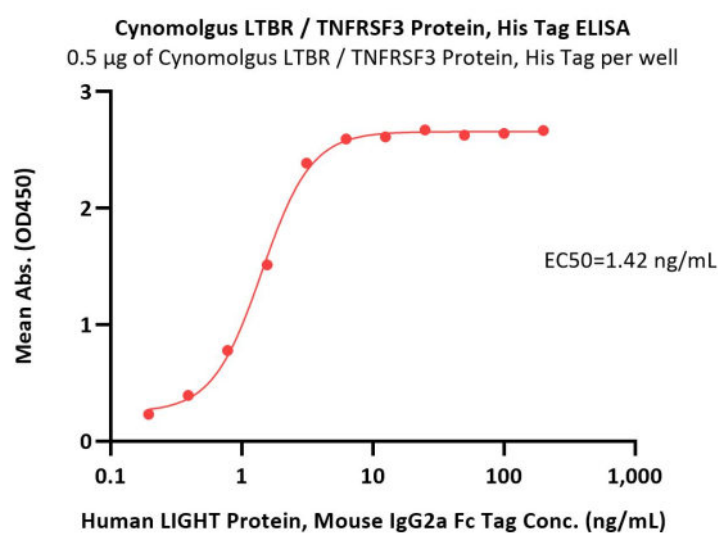
This product is stable after storage at:

- -20°C to -70°C for 12 months in lyophilized state;
- -70°C for 3 months under sterile conditions after reconstitution.

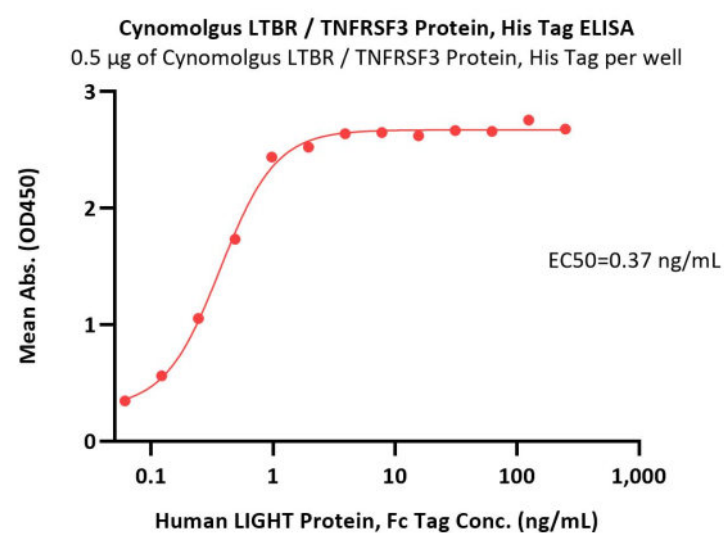
**SDS-PAGE**

Cynomolgus LTBR / TNFRSF3 Protein, His Tag on SDS-PAGE under reducing (R) condition. The gel was stained with Coomassie Blue. The purity of the protein is greater than 90% (With [Star Ribbon Pre-stained Protein Marker](#)).

**Bioactivity-ELISA**



Immobilized Cynomolgus LTBR / TNFRSF3 Protein, His Tag (Cat. No. LTR-C52H3) at 5 µg/mL (100 µL/well) can bind Human LIGHT Protein, Mouse IgG2a Fc Tag (Cat. No. LIT-H5256) with a linear range of 0.2-3 ng/mL (QC tested).



Immobilized Cynomolgus LTBR / TNFRSF3 Protein, His Tag (Cat. No. LTR-C52H3) at 5 µg/mL (100 µL/well) can bind Human LIGHT Protein, Fc Tag (Cat. No. LIT-H5269) with a linear range of 0.1-1 ng/mL (Routinely tested).

## Background

Lymphotoxin-beta receptor (LTBR) is also known as Tumor necrosis factor receptor superfamily member 3 (TNFRSF3), Tumor necrosis factor receptor type III (TNF-RIII), which is a single-pass type I membrane protein containing four TNFR-Cys repeat regions. Except for interacting with HCV core protein, LTBR can not only associate with itself, but also can associate with TRAF3, TRAF4 and TRAF5. As the receptor for the heterotrimeric lymphotoxin containing LTA and LTB, and for TNFS14/LIGHT, LTBR promotes apoptosis via TRAF3 and TRAF5. Furthermore, LTBR may play a role in the development of lymphoid organs.

## Clinical and Translational Updates

Please contact us via [TechSupport@acrobiosystems.com](mailto:TechSupport@acrobiosystems.com) if you have any question on this product.