

**Synonym**

SLC39A6,LIV-1,ZIP6,Zinc transporter ZIP6,ZIP-6

**Source**

Rhesus macaque LIV-1 Protein, His Tag(LV1-R52H8) is expressed from human 293 cells (HEK293). It contains AA Leu 21 - Ile 303 (Accession # [AFH31852.1](#)).

Predicted N-terminus: Leu 21

**Molecular Characterization**

LIV1(Leu 21 - Ile 303) AFH31852.1	Poly-his
--------------------------------------	----------

This protein carries a polyhistidine tag at the C-terminus

The protein has a calculated MW of 33.8 kDa. The protein migrates as 48-65 kDa when calibrated against [Star Ribbon Pre-stained Protein Marker](#) under reducing (R) condition (SDS-PAGE) due to glycosylation.

**Endotoxin**

Less than 1.0 EU per µg by the LAL method.

**Purity**

&gt;90% as determined by SDS-PAGE.

**Formulation**

Lyophilized from 0.22 µm filtered solution in PBS, pH7.4 with trehalose as protectant.

Contact us for customized product form or formulation.

**Reconstitution**

Please see Certificate of Analysis for specific instructions.

*For best performance, we strongly recommend you to follow the reconstitution protocol provided in the CoA.*

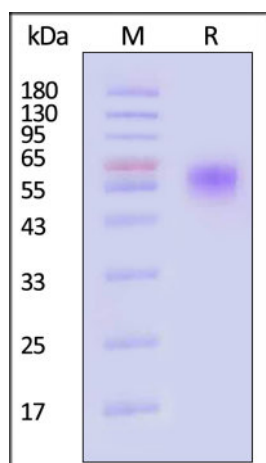
**Storage**

For long term storage, the product should be stored at lyophilized state at -20°C or lower.

*Please avoid repeated freeze-thaw cycles.*

This product is stable after storage at:

- -20°C to -70°C for 12 months in lyophilized state;
- -70°C for 3 months under sterile conditions after reconstitution.

**SDS-PAGE**

Rhesus macaque LIV-1 Protein, His Tag on SDS-PAGE under reducing (R) condition. The gel was stained with Coomassie Blue. The purity of the protein is greater than 90% (With [Star Ribbon Pre-stained Protein Marker](#)).

**Bioactivity-ELISA****LIV-1 ELISA**

Immobilized Rhesus macaque LIV-1 Protein, His Tag (Cat. No. LV1-R52H8) at 1 µg/mL (100 µL/well) can bind Anti-LIV-1 Antibody, Human IgG1 with a linear range of 0.2-4 ng/mL (QC tested).

## Background

LIV-1 is also known as SLC39A6, ZIP-6 and Zinc transporter ZIP6. May act as a zinc-influx transporter. Highly expressed in the breast, prostate, placenta, kidney, pituitary and corpus callosum. Weakly expressed in heart and intestine. Also highly expressed in cells derived from an adenocarcinoma of the cervix and lung carcinoma. Up-regulated by estrogen in breast cancer cells lines.

## Clinical and Translational Updates

Please contact us via [TechSupport@acrobiosystems.com](mailto:TechSupport@acrobiosystems.com) if you have any question on this product.