



Synonym

MSLN,Mesothelin,MPF

Source

PE-Labeled Human Mesothelin (296-580) Protein, His Tag (MSN-HP2H5) is produced via site-specific conjugation of PE to Human Mesothelin (296-580), His Tag under optimal conditions with a proprietary technology. Human Mesothelin (296-580), His Tag is expressed in HEK293 cells containing AA Glu 296 - Gly 580 (Accession # [AAH09272](#)).

Predicted N-terminus: Glu 296

Molecular Characterization

This protein carries a polyhistidine tag at the C-terminus.

The protein has a calculated MW of 35.9 kDa.

Conjugate

PE

Excitation Wavelength: 488 nm / 561 nm

Emission Wavelength: 575 nm

Application

Evaluation of anti-MSLN CAR expression by flow cytometry. Please note that this product is NOT compatible to streptavidin detection system.

Formulation

Lyophilized from 0.22 μ m filtered solution in PBS, 0.5% BSA, pH7.4 with trehalose as protectant.

Contact us for customized product form or formulation.

Reconstitution

Please see Certificate of Analysis for specific instructions.

For best performance, we strongly recommend you to follow the reconstitution protocol provided in the CoA.

Storage

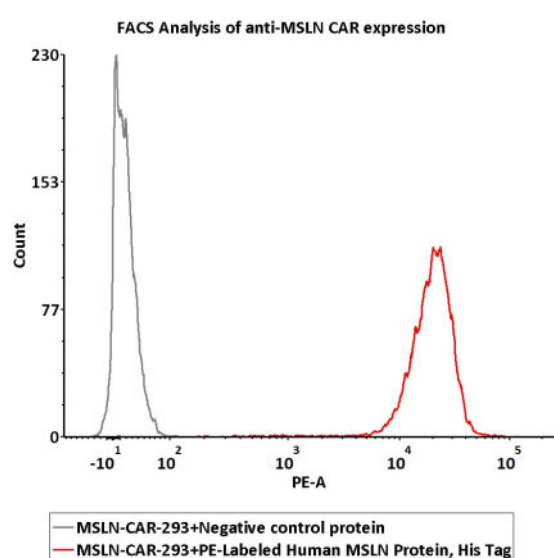
For long term storage, the product should be stored at lyophilized state at -20°C or lower.

Please protect from light and avoid repeated freeze-thaw cycles.

This product is stable after storage at:

- -20°C to -70°C for 12 months in lyophilized state;
- -70°C for 3 months under sterile conditions after reconstitution.

Bioactivity-FACS



1e6 of the anti-MSLN CAR-293 cells were stained with 100 μ L of 1:50 dilution (2 μ L stock solution in 100 μ L FACS buffer) of PE-Labeled Human Mesothelin (296-580) Protein, His Tag (Cat. No. MSN-HP2H5) and negative control protein respectively, PE signal was used to evaluate the binding activity (QC tested).

Discounts, Gifts,
and more!





Background

Mesothelin (MSLN) is also known as CAK1 antigen, Pre-pro-megakaryocyte-potentiating factor, which belongs to the mesothelin family. Mesothelin / MSLN can be proteolytically cleaved into the following two chains by a furin-like convertase: Megakaryocyte-potentiating factor (MPF) and the cleaved form of mesothelin. Both MPF and the cleaved form of mesothelin are N-glycosylated. Mesothelin / MSLN can interact with MUC16. The membrane-anchored forms of MSLN may play a role in cellular adhesion. MPF potentiates megakaryocyte colony formation in vitro.

Clinical and Translational Updates

Please contact us via TechSupport@acrobiosystems.com if you have any question on this product.

Discounts, Gifts,
and more!

