

Synonym

PDL2,PD-L2,Butyrophilin B7-DC,CD273,PDCD1 ligand
2,PDCD1L2,PDCD1LG2

Source

Human PD-L2 Protein, His Tag(PD2-H5220) is expressed from human 293 cells (HEK293). It contains AA Leu 20 - Pro 219 (Accession # [AAI13679](#)).

Predicted N-terminus: Leu 20

Molecular Characterization

PD-L2(Leu 20 - Pro 219)
AAI13679 Poly-his

This protein carries a polyhistidine tag at the C-terminus

The protein has a calculated MW of 23.4 kDa. The protein migrates as 34-46 kDa under reducing (R) condition (SDS-PAGE) due to glycosylation.

Endotoxin

Less than 1.0 EU per µg by the LAL method.

Purity

>95% as determined by SDS-PAGE.

Formulation

Lyophilized from 0.22 µm filtered solution in PBS, pH7.4 with trehalose as protectant.

Contact us for customized product form or formulation.

Reconstitution

Please see Certificate of Analysis for specific instructions.

For best performance, we strongly recommend you to follow the reconstitution protocol provided in the CoA.

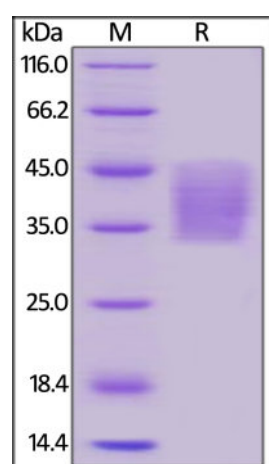
Storage

For long term storage, the product should be stored at lyophilized state at -20°C or lower.

Please avoid repeated freeze-thaw cycles.

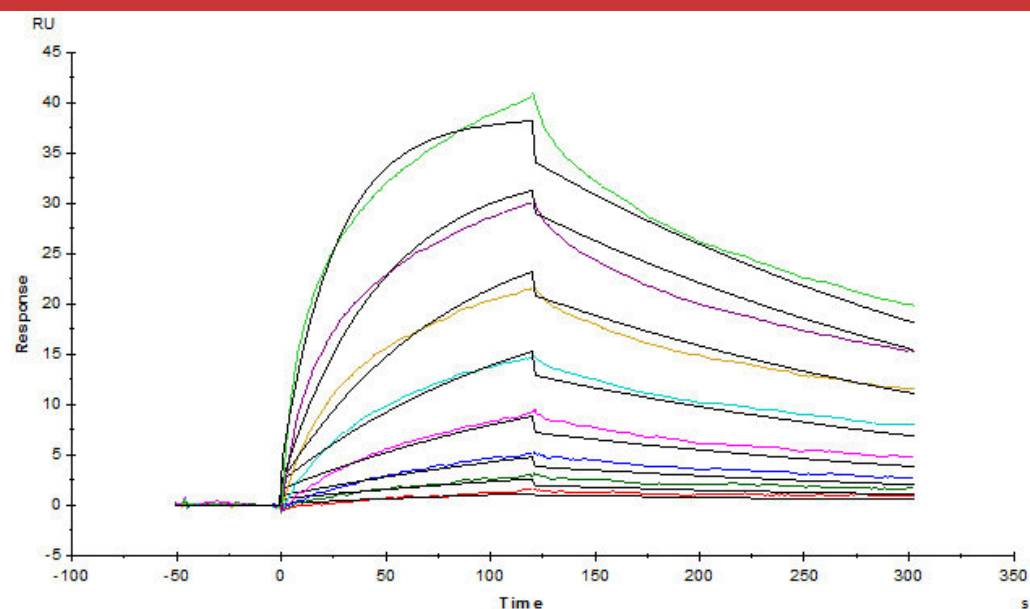
This product is stable after storage at:

- -20°C to -70°C for 12 months in lyophilized state;
- -70°C for 3 months under sterile conditions after reconstitution.

SDS-PAGE

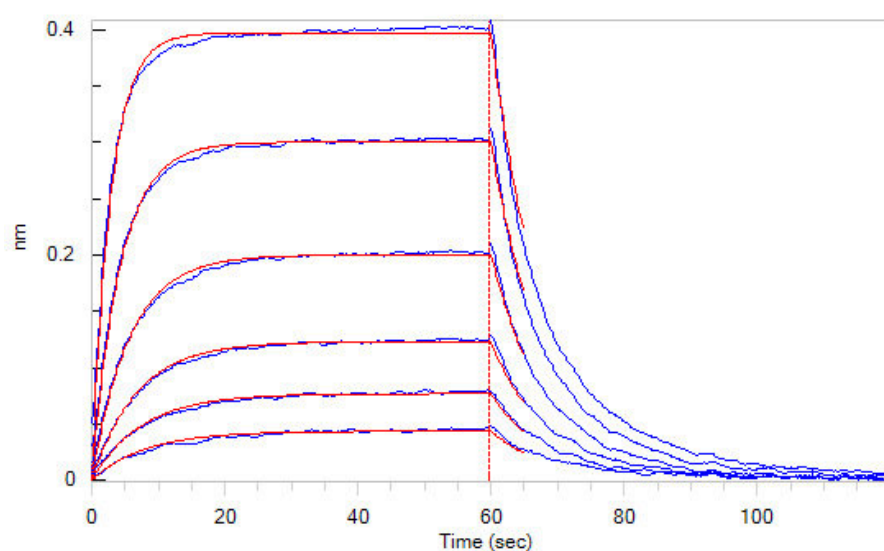
Human PD-L2 Protein, His Tag on SDS-PAGE under reducing (R) condition. The gel was stained overnight with Coomassie Blue. The purity of the protein is greater than 95%.

Bioactivity-SPR

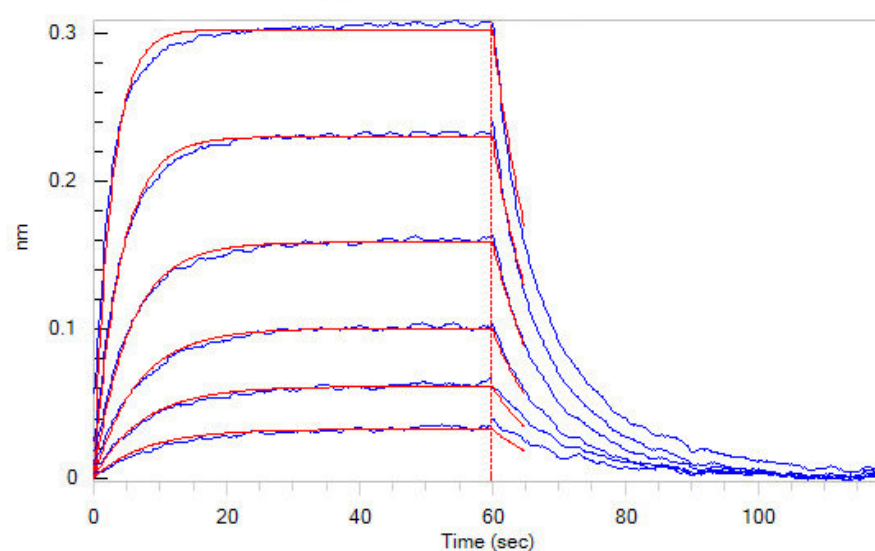


Captured Human PD-L2 Protein, His Tag (Cat. No. PD2-H5220) on CM5 Chip via anti-His antibody can bind Human PD-1, Fc Tag (Cat. No. PD1-H5257) with an affinity constant of 24.9 nM as determined in SPR assay (Biacore T200) (QC tested).

Bioactivity-BLI



Loaded Human PD-1 Protein, Fc Tag (Cat. No. PD1-H5257) on Protein A Biosensor, can bind Human PD-L2 Protein, His Tag (Cat. No. PD2-H5220) with an affinity constant of 0.45 μ M as determined in BLI assay (ForteBio Octet Red96e) (Routinely tested).



Loaded Cynomolgus PD-1, Fc Tag (Cat. No. PD1-C5254) on Protein A Biosensor, can bind Human PD-L2 Protein, His Tag (Cat. No. PD2-H5220) with an affinity constant of 0.4 μ M as determined in BLI assay (ForteBio Octet Red96e) (Routinely tested).

Background

Programmed cell death 1 ligand 2 (PD-L2 or PDCD1 ligand 2) is also known as Butyrophilin B7-DC, CD antigen CD273, which belongs to the immunoglobulin superfamily or BTN/MOG family. The expression of PD-L2 is up-regulated by IFNG/IFN-gamma stimulation in monocytes and induced on dendritic cells grown from peripheral blood mononuclear cells with CSF2 and IL-4. PD-L2 Involved in the costimulatory signal, essential for T-cell proliferation and IFNG production in a PDCD1-independent manner. PD-L2 interaction with PDCD1 inhibits T-cell proliferation by blocking cell cycle progression and cytokine production.

Clinical and Translational Updates

Please contact us via TechSupport@acrobiosystems.com if you have any question on this product.